

GDF-8 Polyclonal Antibody

| | |
|------------------------------|---|
| Catalog No : | YT1890 |
| Reactivity : | Human;Mouse |
| Applications : | WB;IHC;IF;ELISA |
| Target : | GDF-8 |
| Fields : | >>Cytokine-cytokine receptor interaction |
| Gene Name : | MSTN |
| Protein Name : | Growth/differentiation factor 8 |
| Human Gene Id : | 2660 |
| Human Swiss Prot No : | O14793 |
| Mouse Gene Id : | 17700 |
| Mouse Swiss Prot No : | O08689 |
| Immunogen : | The antiserum was produced against synthesized peptide derived from human GDF-8. AA range:38-87 |
| Specificity : | GDF-8 Polyclonal Antibody detects endogenous levels of GDF-8 protein. |
| Formulation : | Liquid in PBS containing 50% glycerol, 0.5% BSA and 0.02% sodium azide. |
| Source : | Polyclonal, Rabbit,IgG |
| Dilution : | WB 1:500-2000 IHC 1:100 - 1:300. ELISA: 1:10000. IF 1:50-200 |
| Purification : | The antibody was affinity-purified from rabbit antiserum by affinity-chromatography using epitope-specific immunogen. |
| Concentration : | 1 mg/ml |

Storage Stability : -15°C to -25°C/1 year(Do not lower than -25°C)

Molecularweight : 43kD

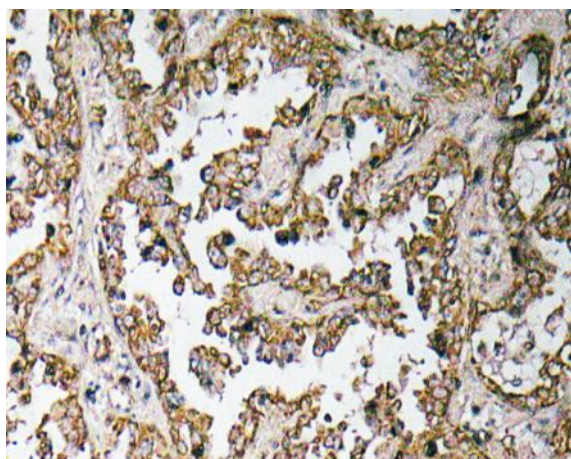
Background : myostatin(MSTN) Homo sapiens This gene encodes a secreted ligand of the TGF-beta (transforming growth factor-beta) superfamily of proteins. Ligands of this family bind various TGF-beta receptors leading to recruitment and activation of SMAD family transcription factors that regulate gene expression. The encoded preproprotein is proteolytically processed to generate each subunit of the disulfide-linked homodimer. This protein negatively regulates skeletal muscle cell proliferation and differentiation. Mutations in this gene are associated with increased skeletal muscle mass in humans and other mammals. [provided by RefSeq, Jul 2016],

Function : function:Acts specifically as a negative regulator of skeletal muscle growth.,online information:Myostatin entry,similarity:Belongs to the TGF-beta family.,subunit:Homodimer; disulfide-linked (By similarity). Interacts with WFIKKN2, leading to inhibit its activity.,

Subcellular Location : Secreted .

Expression : Colon,Muscle,Pericardium,Skeletal muscle,

Products Images



Immunohistochemistry analysis of GDF-8 antibody in paraffin-embedded human lung carcinoma tissue.