

HIPK4 Polyclonal Antibody

Catalog No :	YT2137
Reactivity :	Human;Mouse;Rat
Applications :	WB;IHC;IF;ELISA
Target :	HIPK4
Fields :	>>Cellular senescence
Gene Name :	HIPK4
Protein Name :	Homeodomain-interacting protein kinase 4
Human Gene Id :	147746
Human Swiss Prot No :	Q8NE63
Mouse Gene Id :	233020
Mouse Swiss Prot No :	Q3V016
Rat Gene Id :	308449
Rat Swiss Prot No :	Q4V793
Immunogen :	The antiserum was produced against synthesized peptide derived from human HIPK4. AA range:511-560
Specificity :	HIPK4 Polyclonal Antibody detects endogenous levels of HIPK4 protein.
Formulation :	Liquid in PBS containing 50% glycerol, 0.5% BSA and 0.02% sodium azide.
Source :	Polyclonal, Rabbit,IgG
Dilution :	WB 1:500 - 1:2000. IHC 1:100 - 1:300. IF 1:200 - 1:1000. ELISA: 1:20000. Not yet tested in other applications.

Purification : The antibody was affinity-purified from rabbit antiserum by affinity-chromatography using epitope-specific immunogen.

Concentration : 1 mg/ml

Storage Stability : -15°C to -25°C/1 year(Do not lower than -25°C)

Observed Band : 70kD

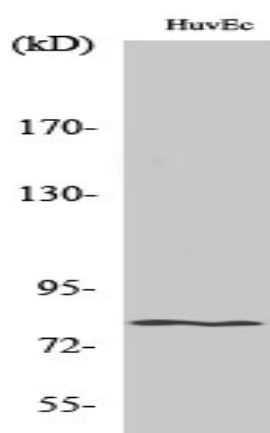
Background : homeodomain interacting protein kinase 4(HIPK4) Homo sapiens This gene encodes a member of the homeodomain interacting protein kinase (HIPK) family of proteins. While other members of this family are found throughout vertebrates, this member is present only in mammals. Compared to other members of this family, the encoded protein lacks a nuclear localization signal and a C-terminal autoinhibitory domain. The encoded protein exhibits kinase activity and may phosphorylate the tumor suppressor protein p53. [provided by RefSeq, Jul 2016],

Function : catalytic activity:ATP + a protein = ADP + a phosphoprotein.,function:Protein kinase that phosphorylates human TP53 at Ser-9, and thus induces TP53 repression of BIRC5 promoter (By similarity). May act as a corepressor of transcription factors .,PTM:Autophosphorylated.,similarity:Belongs to the protein kinase superfamily. CMGC Ser/Thr protein kinase family. HIPK subfamily.,similarity:Contains 1 protein kinase domain.,

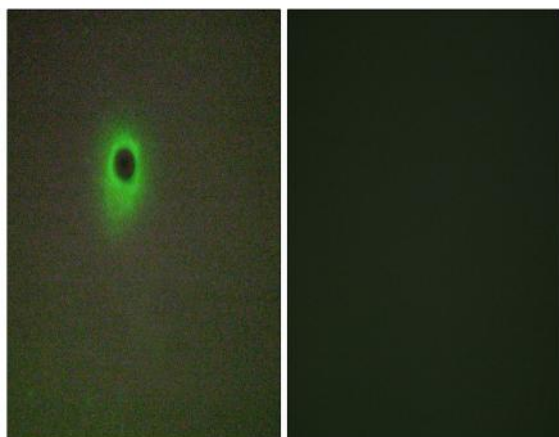
Subcellular Location : Cytoplasm .

Expression : Testis,

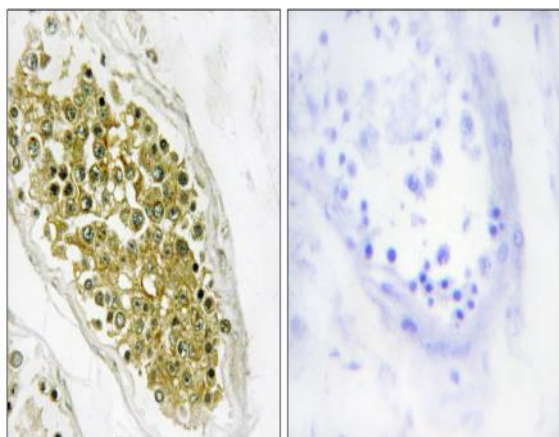
Products Images



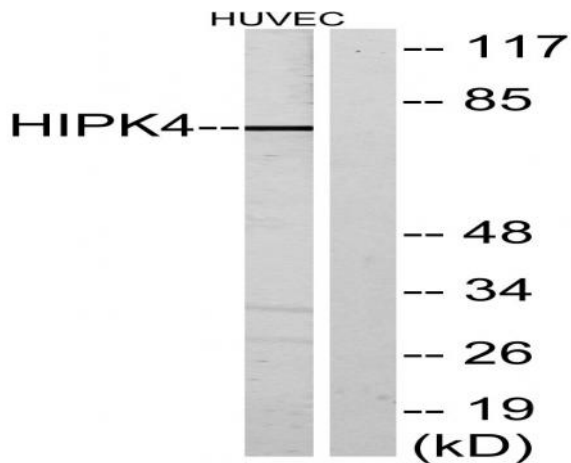
Western Blot analysis of various cells using HIPK4 Polyclonal Antibody



Immunofluorescence analysis of A549 cells, using HIPK4 Antibody. The picture on the right is blocked with the synthesized peptide.



Immunohistochemistry analysis of paraffin-embedded human testis tissue, using HIPK4 Antibody. The picture on the right is blocked with the synthesized peptide.



Western blot analysis of lysates from HUVEC cells, using HIPK4 Antibody. The lane on the right is blocked with the synthesized peptide.