

GCP3 Polyclonal Antibody

Catalog No :	YT1879
Reactivity :	Human;Mouse
Applications :	WB;IHC;IF;ELISA
Target :	GCP3
Gene Name :	TUBGCP3
Protein Name :	Gamma-tubulin complex component 3
Human Gene Id :	10426
Human Swiss Prot No :	Q96CW5
Mouse Gene Id :	259279
Mouse Swiss Prot No :	P58854
Immunogen :	The antiserum was produced against synthesized peptide derived from human TUBGCP3. AA range:201-250
Specificity :	GCP3 Polyclonal Antibody detects endogenous levels of GCP3 protein.
Formulation :	Liquid in PBS containing 50% glycerol, 0.5% BSA and 0.02% sodium azide.
Source :	Polyclonal, Rabbit,IgG
Dilution :	WB 1:500 - 1:2000. IHC 1:100 - 1:300. ELISA: 1:20000.. IF 1:50-200
Purification :	The antibody was affinity-purified from rabbit antiserum by affinity-chromatography using epitope-specific immunogen.
Concentration :	1 mg/ml
Storage Stability :	-15°C to -25°C/1 year(Do not lower than -25°C)

Observed Band : 105kD

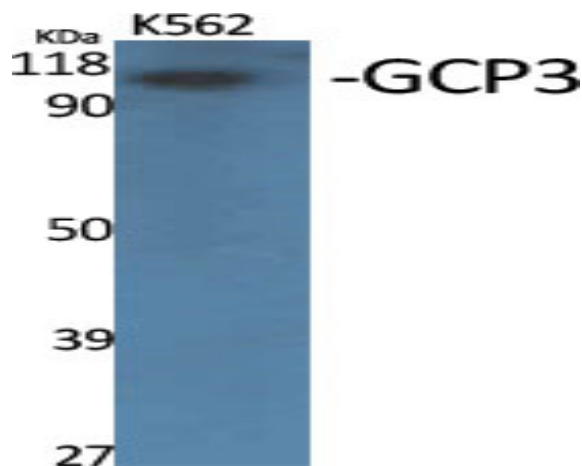
Background : alternative products:Experimental confirmation may be lacking for some isoforms,function:Gamma-tubulin complex is necessary for microtubule nucleation at the centrosome.,similarity:Belongs to the GCP family.,subunit:Gamma-tubulin complex is composed of gamma-tubulin, GCP2, GCP3, GCP4, GCP5 and GCP6.,tissue specificity:Ubiquitously expressed.,

Function : alternative products:Experimental confirmation may be lacking for some isoforms,function:Gamma-tubulin complex is necessary for microtubule nucleation at the centrosome.,similarity:Belongs to the GCP family.,subunit:Gamma-tubulin complex is composed of gamma-tubulin, GCP2, GCP3, GCP4, GCP5 and GCP6.,tissue specificity:Ubiquitously expressed.,

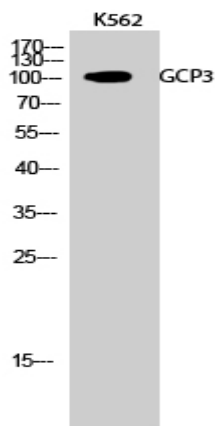
Subcellular Location : Cytoplasm, cytoskeleton, microtubule organizing center, centrosome .

Expression : Ubiquitously expressed.

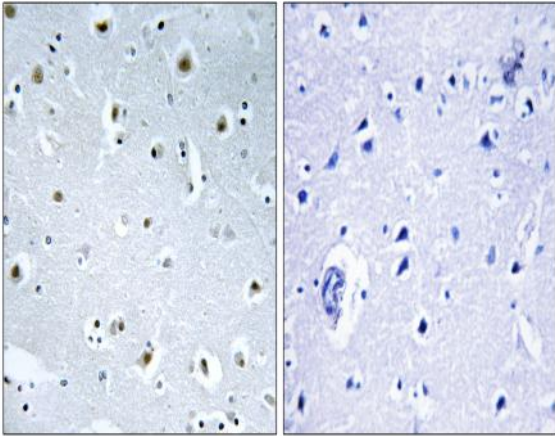
Products Images



Western Blot analysis of various cells using GCP3 Polyclonal Antibody



Western Blot analysis of K562 cells using GCP3 Polyclonal Antibody



Immunohistochemistry analysis of paraffin-embedded human brain tissue, using TUBGCP3 Antibody. The picture on the right is blocked with the synthesized peptide.