

GCKR Polyclonal Antibody

| | |
|------------------------------|---|
| Catalog No : | YT1873 |
| Reactivity : | Human;Mouse;Rat |
| Applications : | WB;ELISA |
| Target : | GCKR |
| Gene Name : | GCKR |
| Protein Name : | Glucokinase regulatory protein |
| Human Gene Id : | 2646 |
| Human Swiss Prot No : | Q14397 |
| Mouse Gene Id : | 231103 |
| Mouse Swiss Prot No : | Q91X44 |
| Rat Gene Id : | 25658 |
| Rat Swiss Prot No : | Q07071 |
| Immunogen : | The antiserum was produced against synthesized peptide derived from human Glucokinase Regulator. AA range:211-260 |
| Specificity : | GCKR Polyclonal Antibody detects endogenous levels of GCKR protein. |
| Formulation : | Liquid in PBS containing 50% glycerol, 0.5% BSA and 0.02% sodium azide. |
| Source : | Polyclonal, Rabbit,IgG |
| Dilution : | WB 1:500 - 1:2000. ELISA: 1:40000. Not yet tested in other applications. |
| Purification : | The antibody was affinity-purified from rabbit antiserum by affinity-chromatography using epitope-specific immunogen. |

Concentration : 1 mg/ml

Storage Stability : -15°C to -25°C/1 year(Do not lower than -25°C)

Observed Band : 68kD

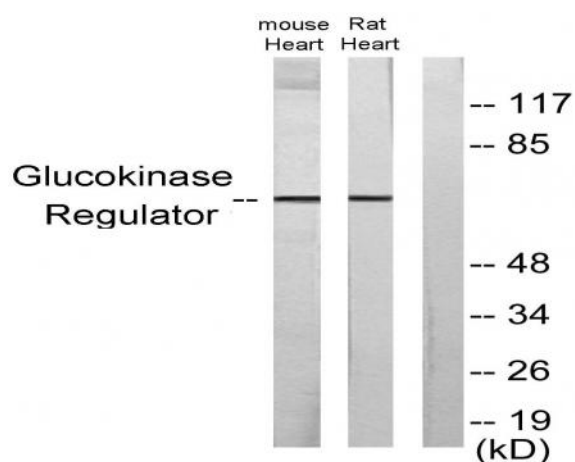
Background : This gene encodes a protein belonging to the GCKR subfamily of the SIS (Sugar ISomerase) family of proteins. The gene product is a regulatory protein that inhibits glucokinase in liver and pancreatic islet cells by binding non-covalently to form an inactive complex with the enzyme. This gene is considered a susceptibility gene candidate for a form of maturity-onset diabetes of the young (MODY). [provided by RefSeq, Jul 2008],

Function : function:Inhibits glucokinase by forming an inactive complex with this enzyme.,similarity:Belongs to the GCKR family.,similarity:Contains 1 SIS domain.,tissue specificity:Found in liver and pancreas. Not detected in muscle, brain, heart, thymus, intestine, uterus, adipose tissue, kidney, adrenal, lung or spleen.,

Subcellular Location : Cytoplasm . Nucleus . Mitochondrion . Under low glucose concentrations, GCKR associates with GCK and the inactive complex is recruited to the hepatocyte nucleus. .

Expression : Found in liver and pancreas. Not detected in muscle, brain, heart, thymus, intestine, uterus, adipose tissue, kidney, adrenal, lung or spleen.

Products Images



Western blot analysis of lysates from mouse heart and rat heart cells, using Glucokinase Regulator Antibody. The lane on the right is blocked with the synthesized peptide.