

## RN141 Polyclonal Antibody

<b>Catalog No :</b>	YN0133
<b>Reactivity :</b>	Human;Mouse;Rat
<b>Applications :</b>	WB;ELISA
<b>Target :</b>	RN141
<b>Gene Name :</b>	RNF141 ZNF230
<b>Protein Name :</b>	RING finger protein 141 (Zinc finger protein 230)
<b>Human Gene Id :</b>	50862
<b>Human Swiss Prot No :</b>	Q8WVD5
<b>Mouse Swiss Prot No :</b>	Q99MB7
<b>Rat Swiss Prot No :</b>	Q6IV57
<b>Immunogen :</b>	Synthesized peptide derived from human protein . at AA range: 150-230
<b>Specificity :</b>	RN141 Polyclonal Antibody detects endogenous levels of protein.
<b>Formulation :</b>	Liquid in PBS containing 50% glycerol, and 0.02% sodium azide.
<b>Source :</b>	Polyclonal, Rabbit,IgG
<b>Dilution :</b>	WB 1:500-2000 ELISA 1:5000-20000
<b>Purification :</b>	The antibody was affinity-purified from rabbit antiserum by affinity-chromatography using epitope-specific immunogen.
<b>Concentration :</b>	1 mg/ml
<b>Storage Stability :</b>	-15°C to -25°C/1 year(Do not lower than -25°C)

**Observed Band :** 25kD

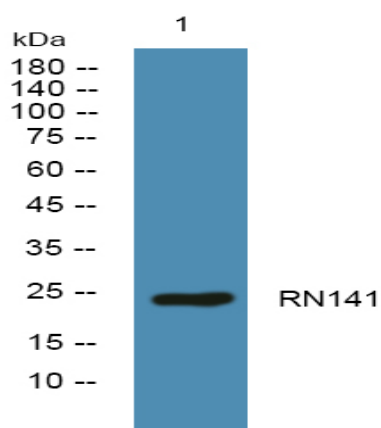
**Background :** ring finger protein 141(RNF141) Homo sapiens The protein encoded by this gene contains a RING finger, a motif known to be involved in protein-DNA and protein-protein interactions. Abundant expression of this gene was found in the testicular tissue of fertile men, but was not detected in azoospermic patients. Studies of the mouse counterpart suggest that this gene may function as a testis specific transcription factor during spermatogenesis. [provided by RefSeq, Jul 2008],

**Function :** function:May be involved in spermatogenesis.,similarity:Contains 1 RING-type zinc finger.,tissue specificity:Isoform 1 is testis-specific. Isoform 2 is expressed in heart, brain, skeletal muscle, kidney and pancreas. Isoform 1 is not expressed in fetus or in azoospermic patients.,

**Subcellular Location :** Membrane ; Lipid-anchor .

**Expression :** Isoform 1 is testis-specific. Isoform 2 is expressed in heart, brain, skeletal muscle, kidney and pancreas. Isoform 1 is not expressed in fetus or in azoospermic patients.

## Products Images



Western blot analysis of lysates from U2OS cells, primary antibody was diluted at 1:1000, 4° over night