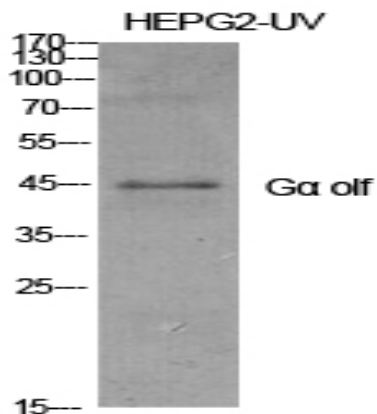


Gα olf Polyclonal Antibody

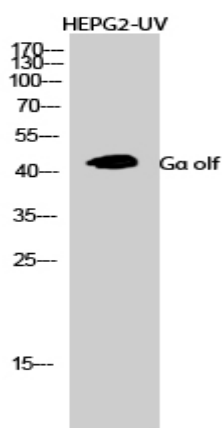
Catalog No :	YT2093
Reactivity :	Human;Mouse;Rat
Applications :	WB;IHC;IF;ELISA
Target :	Gα olf
Fields :	>>Calcium signaling pathway;>>Dopaminergic synapse;>>Olfactory transduction;>>Parkinson disease;>>Chagas disease;>>Amoebiasis
Gene Name :	GNAL
Protein Name :	Guanine nucleotide-binding protein G(olf) subunit alpha
Human Gene Id :	2774
Human Swiss Prot No :	P38405
Mouse Gene Id :	14680
Mouse Swiss Prot No :	Q8CGK7
Rat Swiss Prot No :	P38406
Immunogen :	The antiserum was produced against synthesized peptide derived from human GNAL. AA range:41-90
Specificity :	Gα olf Polyclonal Antibody detects endogenous levels of Gα olf protein.
Formulation :	Liquid in PBS containing 50% glycerol, 0.5% BSA and 0.02% sodium azide.
Source :	Polyclonal, Rabbit,IgG
Dilution :	WB 1:500 - 1:2000. IHC 1:100 - 1:300. ELISA: 1:20000.. IF 1:50-200
Purification :	The antibody was affinity-purified from rabbit antiserum by affinity-chromatography using epitope-specific immunogen.

Concentration :	1 mg/ml
Storage Stability :	-15°C to -25°C/1 year(Do not lower than -25°C)
Observed Band :	40kD
Cell Pathway :	Calcium;Olfactory transduction;
Background :	<p>G protein subunit alpha L(GNAL) Homo sapiens This gene encodes a stimulatory G protein alpha subunit which mediates odorant signaling in the olfactory epithelium. This protein couples dopamine type 1 receptors and adenosine A2A receptors and is widely expressed in the central nervous system. Mutations in this gene have been associated with dystonia 25 and this gene is located in a susceptibility region for bipolar disorder and schizophrenia. Alternative splicing results in multiple transcript variants. [provided by RefSeq, Dec 2013],</p>
Function :	<p>function:Guanine nucleotide-binding proteins (G proteins) are involved as modulators or transducers in various transmembrane signaling systems. G(olf) alpha mediates signal transduction within the olfactory neuroepithelium and the basal ganglia. May be involved in some aspect of visual transduction, and in mediating the effect of one or more hormones/neurotransmitters.,similarity:Belongs to the G-alpha family. G(s) subfamily.,subunit:G proteins are composed of 3 units; alpha, beta and gamma. The alpha chain contains the guanine nucleotide binding site.,tissue specificity:Detected in olfactory neuroepithelium, brain, testis, and to a lower extent in retina, lung alveoli, spleen. Trace amounts where seen in kidney, adrenal gland and liver. Found to be expressed in all the insulinomas examined.,</p>
Subcellular Location :	plasma membrane,extracellular exosome,
Expression :	Detected in olfactory neuroepithelium, brain, testis, and to a lower extent in retina, lung alveoli, spleen. Trace amounts where seen in kidney, adrenal gland and liver. Found to be expressed in all the insulinomas examined.

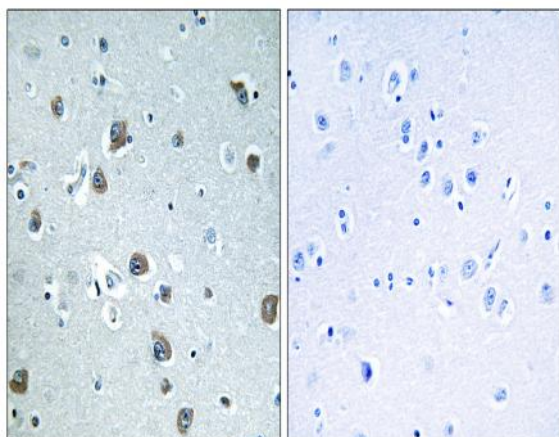
Products Images



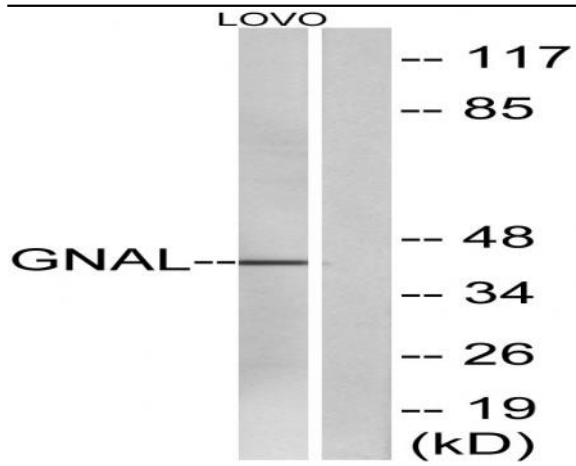
Western Blot analysis of various cells using Ga olf Polyclonal Antibody diluted at 1:1000



Western Blot analysis of HEPG2-UV cells using Ga olf Polyclonal Antibody diluted at 1:1000



Immunohistochemistry analysis of paraffin-embedded human brain tissue, using GNAL Antibody. The picture on the right is blocked with the synthesized peptide.



Western blot analysis of lysates from LOVO cells, using GNAL Antibody. The lane on the right is blocked with the synthesized peptide.