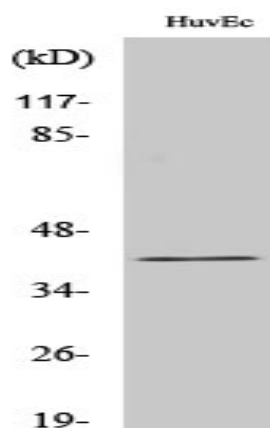


## Gz- $\alpha$ Polyclonal Antibody

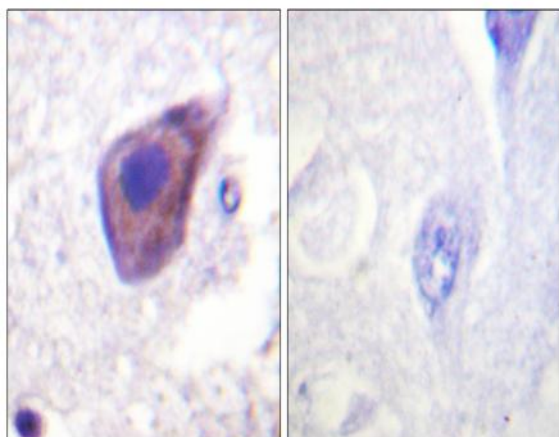
|                              |   |
|------------------------------|---|
| <b>Catalog No :</b>          | YT2090  |
| <b>Reactivity :</b>          | Human;Mouse;Rat;Monkey  |
| <b>Applications :</b>        | WB;IHC;IF;ELISA   |
| <b>Target :</b>              | Gz- $\alpha$  |
| <b>Fields :</b>              | >>Long-term depression  |
| <b>Gene Name :</b>           | GNAZ  |
| <b>Protein Name :</b>        | Guanine nucleotide-binding protein G(z) subunit alpha   |
| <b>Human Gene Id :</b>       | 2781  |
| <b>Human Swiss Prot No :</b> | P19086  |
| <b>Mouse Gene Id :</b>       | 14687   |
| <b>Mouse Swiss Prot No :</b> | O70443  |
| <b>Rat Gene Id :</b>         | 25740   |
| <b>Rat Swiss Prot No :</b>   | P19627  |
| <b>Immunogen :</b>           | The antiserum was produced against synthesized peptide derived from human Gz-alpha. AA range:1-50 |
| <b>Specificity :</b>         | Gz- $\alpha$ Polyclonal Antibody detects endogenous levels of Gz- $\alpha$ protein.               |
| <b>Formulation :</b>         | Liquid in PBS containing 50% glycerol, 0.5% BSA and 0.02% sodium azide.                           |
| <b>Source :</b>              | Polyclonal, Rabbit,IgG  |
| <b>Dilution :</b>            | WB 1:500 - 1:2000. IHC 1:100 - 1:300. ELISA: 1:40000.. IF 1:50-200                                |

|                               |  |
|-------------------------------|--|
| <b>Purification :</b>         | The antibody was affinity-purified from rabbit antiserum by affinity-chromatography using epitope-specific immunogen.  |
| <b>Concentration :</b>        | 1 mg/ml  |
| <b>Storage Stability :</b>    | -15°C to -25°C/1 year(Do not lower than -25°C)   |
| <b>Observed Band :</b>        | 41kD   |
| <b>Cell Pathway :</b>         | Long-term depression;  |
| <b>Background :</b>           | G protein subunit alpha z(GNAZ) Homo sapiens The protein encoded by this gene is a member of a G protein subfamily that mediates signal transduction in pertussis toxin-insensitive systems. This encoded protein may play a role in maintaining the ionic balance of perilymphatic and endolymphatic cochlear fluids. [provided by RefSeq, Jul 2008], |
| <b>Function :</b>             | function:Guanine nucleotide-binding proteins (G proteins) are involved as modulators or transducers in various transmembrane signaling systems.,similarity:Belongs to the G-alpha family. G(i/o/t/z) subfamily.,subunit:G proteins are composed of 3 units; alpha, beta and gamma. The alpha chain contains the guanine nucleotide binding site.,      |
| <b>Subcellular Location :</b> | Membrane; Lipid-anchor.  |
| <b>Expression :</b>           | Brain,PNS,   |

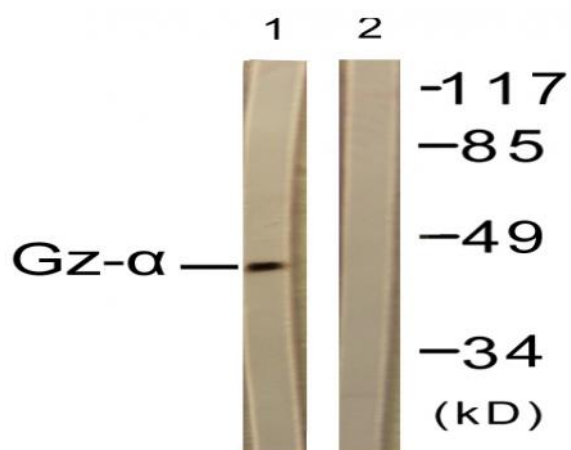
## Products Images



Western Blot analysis of various cells using Gz- $\alpha$  Polyclonal Antibody



Immunohistochemistry analysis of paraffin-embedded human brain tissue, using Gz-alpha Antibody. The picture on the right is blocked with the synthesized peptide.



Western blot analysis of lysates from COS7 cells, treated with PMA 125ng/ml 30', using Gz-alpha Antibody. The lane on the right is blocked with the synthesized peptide.