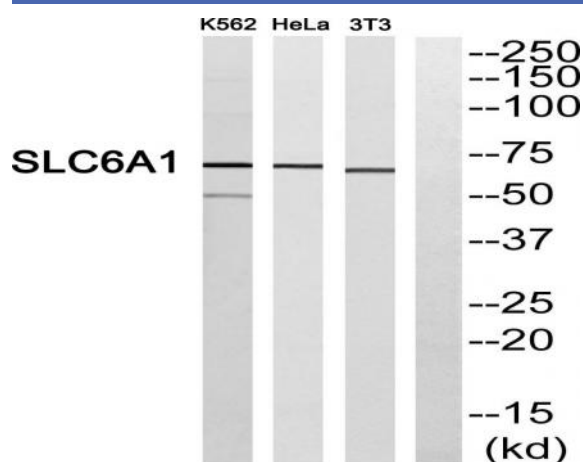


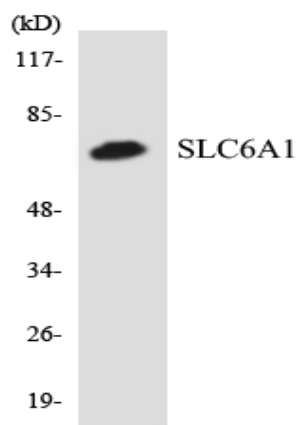
GABA T-1 Polyclonal Antibody

Catalog No :	YT1819
Reactivity :	Human;Mouse;Rat
Applications :	WB;ELISA
Target :	GABA T-1
Fields :	>>Synaptic vesicle cycle;>>GABAergic synapse
Gene Name :	SLC6A1
Protein Name :	Sodium- and chloride-dependent GABA transporter 1
Human Gene Id :	6529
Human Swiss Prot No :	P30531
Mouse Gene Id :	232333
Mouse Swiss Prot No :	P31648
Rat Gene Id :	79212
Rat Swiss Prot No :	P23978
Immunogen :	The antiserum was produced against synthesized peptide derived from human SLC6A1. AA range:381-430
Specificity :	GABA T-1 Polyclonal Antibody detects endogenous levels of GABA T-1 protein.
Formulation :	Liquid in PBS containing 50% glycerol, 0.5% BSA and 0.02% sodium azide.
Source :	Polyclonal, Rabbit,IgG
Dilution :	WB 1:500 - 1:2000. ELISA: 1:40000. Not yet tested in other applications.

Purification :	The antibody was affinity-purified from rabbit antiserum by affinity-chromatography using epitope-specific immunogen.
Concentration :	1 mg/ml
Storage Stability :	-15°C to -25°C/1 year(Do not lower than -25°C)
Observed Band :	67kD
Background :	The SLC6A1 gene encodes a gamma-aminobutyric acid (GABA) transporter, which removes GABA from the synaptic cleft (Hirunsatit et al., 2009 [PubMed 19077666]).[supplied by OMIM, Jul 2009],
Function :	domain:The PDZ domain-binding motif is involved in the interaction with MPP5.,function:Terminates the action of GABA by its high affinity sodium-dependent reuptake into presynaptic terminals.,miscellaneous:This protein is the target of psychomotor stimulants such as amphetamines or cocaine.,similarity:Belongs to the sodium:neurotransmitter symporter (SNF) family.,subcellular location:Localized at the plasma membrane and in a subset of intracellular vesicles. Localized at the presynaptic terminals of interneurons.,subunit:Interacts with MPP5.,
Subcellular Location :	Cell membrane; Multi-pass membrane protein. Membrane; Multi-pass membrane protein. Cell junction, synapse, presynapse . Localized at the plasma membrane and in a subset of intracellular vesicles. Localized at the presynaptic terminals of interneurons (By similarity). .
Expression :	Brain,

Products Images





Western blot analysis of the lysates from HeLa cells using SLC6A1 antibody.