

GRIN2 Polyclonal Antibody

Catalog No :	YT2060
Reactivity :	Human
Applications :	WB;IHC;IF;ELISA
Target :	GRIN2
Gene Name :	GPRIN2
Protein Name :	G protein-regulated inducer of neurite outgrowth 2
Human Gene Id :	9721
Human Swiss Prot No :	O60269
Immunogen :	The antiserum was produced against synthesized peptide derived from human GPRIN2. AA range:11-60
Specificity :	GRIN2 Polyclonal Antibody detects endogenous levels of GRIN2 protein.
Formulation :	Liquid in PBS containing 50% glycerol, 0.5% BSA and 0.02% sodium azide.
Source :	Polyclonal, Rabbit,IgG
Dilution :	WB 1:500 - 1:2000. IHC 1:100 - 1:300. ELISA: 1:40000.. IF 1:50-200
Purification :	The antibody was affinity-purified from rabbit antiserum by affinity-chromatography using epitope-specific immunogen.
Concentration :	1 mg/ml
Storage Stability :	-15°C to -25°C/1 year(Do not lower than -25°C)
Observed Band :	47kD
Background :	function:May be involved in neurite outgrowth.,subunit:Interacts with activated forms of GNAO1 and GNAZ.,tissue specificity:Expressed specifically in the

cerebellum.,

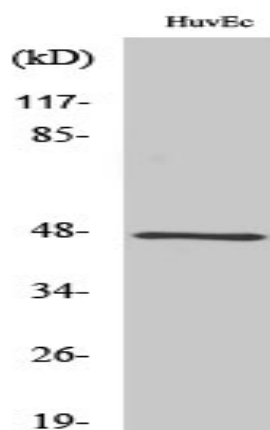
Function :

function:May be involved in neurite outgrowth.,subunit:Interacts with activated forms of GNAO1 and GNAZ.,tissue specificity:Expressed specifically in the cerebellum.,

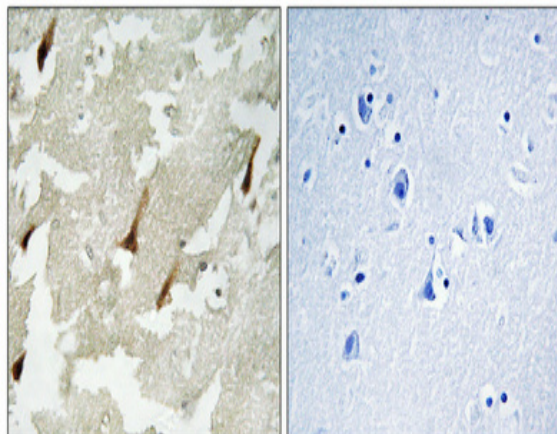
Expression :

Expressed specifically in the cerebellum.

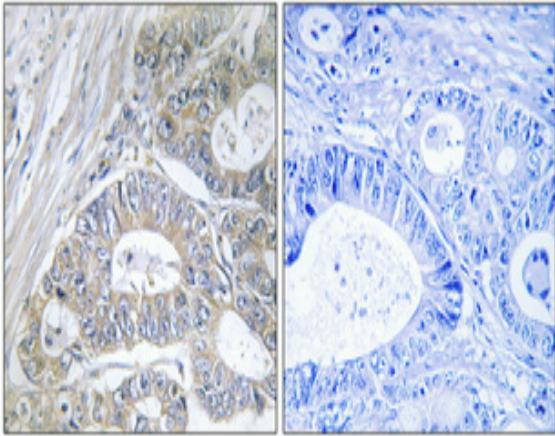
Products Images



Western Blot analysis of various cells using GRIN2 Polyclonal Antibody



Immunohistochemical analysis of paraffin-embedded Human brain. Antibody was diluted at 1:100(4° overnight). High-pressure and temperature Tris-EDTA,pH8.0 was used for antigen retrieval. Negative contrl (right) obtaned from antibody was pre-absorbed by immunogen peptide.



Immunohistochemical analysis of paraffin-embedded Human colon cancer. Antibody was diluted at 1:100(4° overnight). High-pressure and temperature Tris-EDTA,pH8.0 was used for antigen retrieval. Negative contrl (right) obtaned from antibody was pre-absorbed by immunogen peptide.