

GRASP55 Polyclonal Antibody

Catalog No :	YT2053
Reactivity :	Human;Mouse;Rat
Applications :	WB;IHC;IF;ELISA
Target :	GRASP55
Gene Name :	GORASP2
Protein Name :	Golgi reassembly-stacking protein 2
Human Gene Id :	26003
Human Swiss Prot No :	Q9H8Y8
Mouse Gene Id :	70231
Mouse Swiss Prot No :	Q99JX3
Rat Swiss Prot No :	Q9R064
Immunogen :	The antiserum was produced against synthesized peptide derived from human GORASP2. AA range:181-230
Specificity :	GRASP55 Polyclonal Antibody detects endogenous levels of GRASP55 protein.
Formulation :	Liquid in PBS containing 50% glycerol, 0.5% BSA and 0.02% sodium azide.
Source :	Polyclonal, Rabbit,IgG
Dilution :	WB 1:500 - 1:2000. IHC 1:100 - 1:300. ELISA: 1:40000.. IF 1:50-200
Purification :	The antibody was affinity-purified from rabbit antiserum by affinity-chromatography using epitope-specific immunogen.
Concentration :	1 mg/ml

Storage Stability : -15°C to -25°C/1 year(Do not lower than -25°C)

Observed Band : 47kD

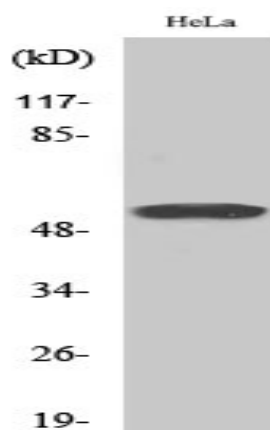
Background : This gene encodes a member of the Golgi reassembly stacking protein family. These proteins may play a role in the stacking of Golgi cisternae and Golgi ribbon formation, as well as Golgi fragmentation during apoptosis or mitosis. The encoded protein also plays a role in the intracellular transport of transforming growth factor alpha and may function as a molecular chaperone. A pseudogene of this gene is located on the short arm of chromosome 2. Alternatively spliced transcript variants encoding multiple isoforms have been observed for this gene. [provided by RefSeq, Jan 2011],

Function : function:May be involved in assembly and membrane stacking of the Golgi cisternae, and in the process by which Golgi stacks reform after mitotic breakdown. May regulate the intracellular transport and presentation of a defined set of transmembrane proteins, such as transmembrane Tgfa.,PTM:Myristoylated. Myristoylation is essential for the Golgi targeting.,PTM:Palmitoylated.,PTM:Phosphorylated in mitotic cells.,similarity:Belongs to the GORASP family.,similarity:Contains 1 PDZ (DHR) domain.,subunit:Forms a RAB2 effector complex with BLZF1/Golgin 45 in the medial Golgi. Interacts with members of the p24 cargo receptors. Interacts with CNIH and the cytoplasmic domain of transmembrane TGFA, prior its transit in the trans-Golgi. Does not interact with GM130.,

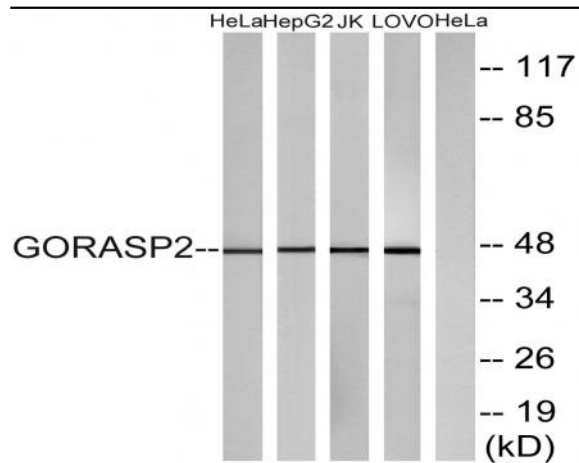
Subcellular Location : Golgi apparatus membrane ; Lipid-anchor . Endoplasmic reticulum membrane . Golgi apparatus . Detected in the intermediate Golgi, membrane-associated (By similarity). ER stress triggers its relocalization from Golgi to ER membrane (PubMed:27062250, PubMed:28067262). .

Expression : Epithelium,Testis,Uterus,

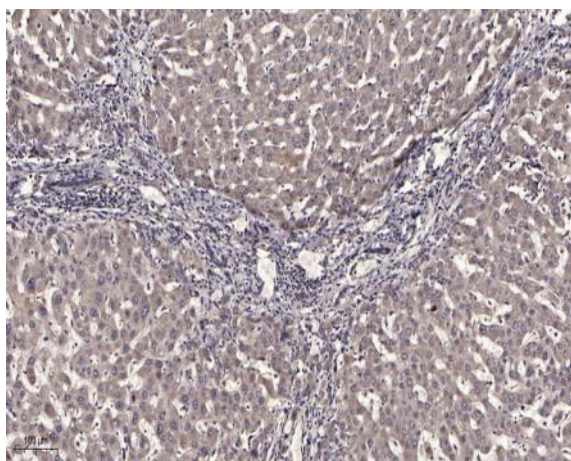
Products Images



Western Blot analysis of various cells using GRASP55 Polyclonal Antibody



Western blot analysis of lysates from HeLa, HepG2, Jurkat, and LOVO cells, using GORASP2 Antibody. The lane on the right is blocked with the synthesized peptide.



Immunohistochemical analysis of paraffin-embedded human liver cancer. 1, Antibody was diluted at 1:200(4° overnight). 2, Tris-EDTA,pH9.0 was used for antigen retrieval. 3,Secondary antibody was diluted at 1:200(room temperature, 45min).