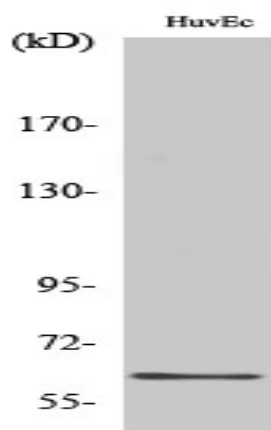


GRB14 Polyclonal Antibody

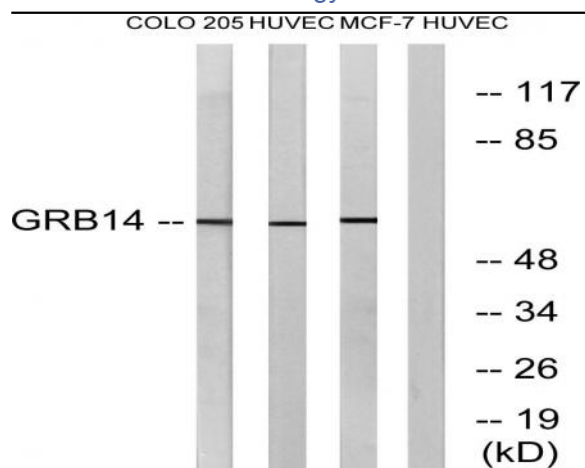
Catalog No :	YT2055
Reactivity :	Human;Mouse;Rat
Applications :	WB;IHC;IF;ELISA
Target :	GRB14
Gene Name :	GRB14
Protein Name :	Growth factor receptor-bound protein 14
Human Gene Id :	2888
Human Swiss Prot No :	Q14449
Mouse Gene Id :	50915
Mouse Swiss Prot No :	Q9JLM9
Rat Gene Id :	58844
Rat Swiss Prot No :	O88900
Immunogen :	The antiserum was produced against synthesized peptide derived from human GRB14. AA range:81-130
Specificity :	GRB14 Polyclonal Antibody detects endogenous levels of GRB14 protein.
Formulation :	Liquid in PBS containing 50% glycerol, 0.5% BSA and 0.02% sodium azide.
Source :	Polyclonal, Rabbit,IgG
Dilution :	WB 1:500 - 1:2000. IHC 1:100 - 1:300. ELISA: 1:40000.. IF 1:50-200
Purification :	The antibody was affinity-purified from rabbit antiserum by affinity-chromatography using epitope-specific immunogen.

Concentration :	1 mg/ml
Storage Stability :	-15°C to -25°C/1 year(Do not lower than -25°C)
Observed Band :	61kD
Cell Pathway :	Stem cell pathway
Background :	The product of this gene belongs to a small family of adapter proteins that are known to interact with a number of receptor tyrosine kinases and signaling molecules. This gene encodes a growth factor receptor-binding protein that interacts with insulin receptors and insulin-like growth-factor receptors. This protein likely has an inhibitory effect on receptor tyrosine kinase signaling and, in particular, on insulin receptor signaling. This gene may play a role in signaling pathways that regulate growth and metabolism. Alternative splicing results in multiple transcript variants. [provided by RefSeq, Dec 2014],
Function :	function:Interacts with the cytoplasmic domain of the autophosphorylated insulin receptor which is then inhibited. The interaction is mediated by the SH2 domain.,PTM:Phosphorylated on serine residues.,similarity:Belongs to the GRB7/10/14 family.,similarity:Contains 1 PH domain.,similarity:Contains 1 Ras-associating domain.,similarity:Contains 1 SH2 domain.,subunit:Binds to the ankyrin repeat region of TNKS2 via its N-terminus.,tissue specificity:Expressed at high levels in the liver, kidney, pancreas, testis, ovary, heart and skeletal muscle.,
Subcellular Location :	Cytoplasm . Endosome membrane ; Peripheral membrane protein . Upon insulin stimulation, translocates to the plasma membrane. .
Expression :	Expressed at high levels in the liver, kidney, pancreas, testis, ovary, heart and skeletal muscle.

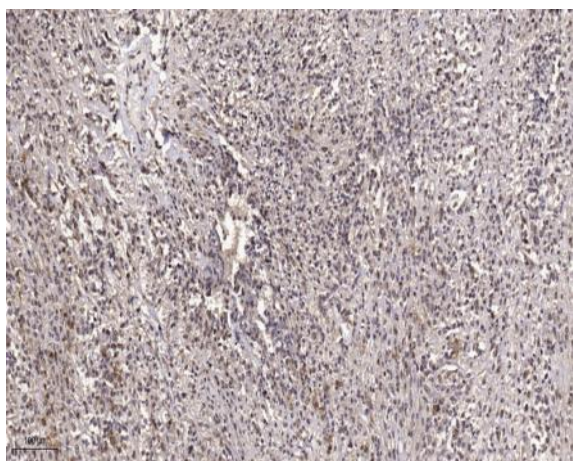
Products Images



Western Blot analysis of various cells using GRB14 Polyclonal Antibody



Western blot analysis of lysates from HUVEC, COLO, and MCF-7 cells, using GRB14 Antibody. The lane on the right is blocked with the synthesized peptide.



Immunohistochemical analysis of paraffin-embedded human small intestinal carcinoma tissue. 1, primary Antibody was diluted at 1:200 (4° overnight). 2, Sodium citrate pH 6.0 was used for antigen retrieval (>98° C, 20min). 3, Secondary antibody was diluted at 1:200