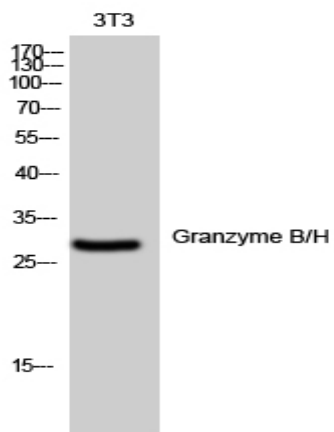


Granzyme B/H Polyclonal Antibody

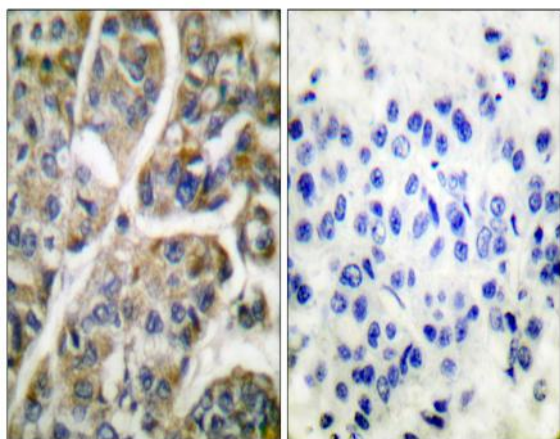
Catalog No :	YT2049
Reactivity :	Human;Mouse;Rat
Applications :	WB;IHC;IF;ELISA
Target :	Granzyme B/H
Fields :	>>Apoptosis;>>Natural killer cell mediated cytotoxicity;>>Type I diabetes mellitus;>>Transcriptional misregulation in cancer;>>Autoimmune thyroid disease;>>Allograft rejection;>>Graft-versus-host disease
Gene Name :	GZMB/GZMH
Protein Name :	Granzyme B/H
Human Gene Id :	2999
Human Swiss Prot No :	P10144/P20718
Mouse Gene Id :	14939
Rat Gene Id :	1.00361e+008
Rat Swiss Prot No :	P18291
Immunogen :	The antiserum was produced against synthesized peptide derived from human Granzyme B. AA range:10-59
Specificity :	Granzyme B/H Polyclonal Antibody detects endogenous levels of Granzyme B/H protein.
Formulation :	Liquid in PBS containing 50% glycerol, 0.5% BSA and 0.02% sodium azide.
Source :	Polyclonal, Rabbit,IgG
Dilution :	WB 1:500 - 1:2000. IHC 1:100 - 1:300. ELISA: 1:5000.. IF 1:50-200

Purification :	The antibody was affinity-purified from rabbit antiserum by affinity-chromatography using epitope-specific immunogen.
Concentration :	1 mg/ml
Storage Stability :	-15°C to -25°C/1 year(Do not lower than -25°C)
Observed Band :	38kD
Cell Pathway :	Natural killer cell mediated cytotoxicity;Type I diabetes mellitus;Autoimmune thyroid disease;Allograft rejection;Graft-versus-host disease;
Background :	<p>This gene encodes a member of the granzyme subfamily of proteins, part of the peptidase S1 family of serine proteases. The encoded preproprotein is secreted by natural killer (NK) cells and cytotoxic T lymphocytes (CTLs) and proteolytically processed to generate the active protease, which induces target cell apoptosis. This protein also processes cytokines and degrades extracellular matrix proteins, and these roles are implicated in chronic inflammation and wound healing. Expression of this gene may be elevated in human patients with cardiac fibrosis. [provided by RefSeq, Sep 2016],</p>
Function :	<p>catalytic activity:Preferential cleavage: -Asp- -Xaa- >> -Asn- -Xaa- > -Met- -Xaa-, -Ser- -Xaa-.,function:This enzyme is necessary for target cell lysis in cell-mediated immune responses. It cleaves after Asp. Seems to be linked to an activation cascade of caspases (aspartate-specific cysteine proteases) responsible for apoptosis execution. Cleaves caspase-3, -7, -9 and 10 to give rise to active enzymes mediating apoptosis.,induction:By staphylococcal enterotoxin A (SEA) in peripheral blood leukocytes.,similarity:Belongs to the peptidase S1 family.,similarity:Belongs to the peptidase S1 family. Granzyme subfamily.,similarity:Contains 1 peptidase S1 domain.,subcellular location:Cytoplasmic granules of cytolytic T-lymphocytes and natural killer cells.,</p>
Subcellular Location :	Secreted . Cytolytic granule . Delivered into the target cell by perforin (PubMed:20038786). .
Expression :	Breast carcinoma,Large granular lymphocyte leukemia,Pancreas,

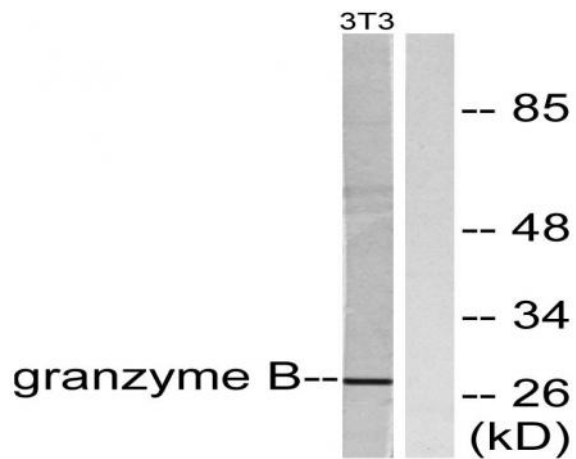
Products Images



Western Blot analysis of 3T3 cells using Granzyme B/H Polyclonal Antibody diluted at 1:500



Immunohistochemistry analysis of paraffin-embedded human breast carcinoma tissue, using Granzyme B Antibody. The picture on the right is blocked with the synthesized peptide.



Western blot analysis of lysates from NIH/3T3 cells, using Granzyme B Antibody. The lane on the right is blocked with the synthesized peptide.