

GPRC5D Polyclonal Antibody

Catalog No :	YT2039
Reactivity :	Human;Mouse
Applications :	WB;IF;ELISA
Target :	GPRC5D
Gene Name :	GPRC5D
Protein Name :	G-protein coupled receptor family C group 5 member D
Human Gene Id :	55507
Human Swiss Prot No :	Q9NZD1
Mouse Gene Id :	93746
Mouse Swiss Prot No :	Q9JIL6
Immunogen :	The antiserum was produced against synthesized peptide derived from human GPRC5D. AA range:271-320
Specificity :	GPRC5D Polyclonal Antibody detects endogenous levels of GPRC5D protein.
Formulation :	Liquid in PBS containing 50% glycerol, 0.5% BSA and 0.02% sodium azide.
Source :	Polyclonal, Rabbit,IgG
Dilution :	WB 1:500 - 1:2000. IF 1:200 - 1:1000. ELISA: 1:5000. Not yet tested in other applications.
Purification :	The antibody was affinity-purified from rabbit antiserum by affinity-chromatography using epitope-specific immunogen.
Concentration :	1 mg/ml
Storage Stability :	-15°C to -25°C/1 year(Do not lower than -25°C)

Observed Band : 43kD

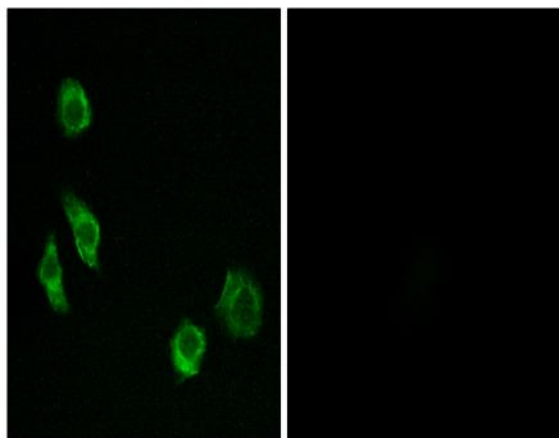
Background : The protein encoded by this gene is a member of the G protein-coupled receptor family; however, the specific function of this gene has not yet been determined. [provided by RefSeq, Jul 2008],

Function : function:Unknown.,similarity:Belongs to the G-protein coupled receptor 3 family.,tissue specificity:Widely expressed in the peripheral system. Expression pattern is high in pancreas, medium in kidney, small intestine, spleen and testis, low in lung, colon, leukocyte, prostate and thymus and not detectable in brain, heart, liver, placenta, skeletal muscle and ovary.,

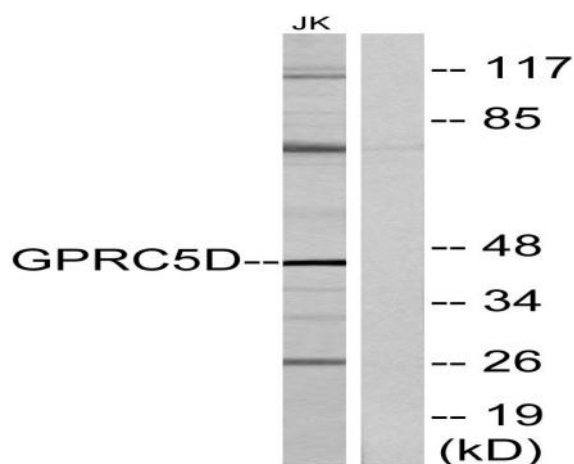
Subcellular Location : Cell membrane ; Multi-pass membrane protein .

Expression : Widely expressed in the peripheral system. Expression pattern is high in pancreas, medium in kidney, small intestine, spleen and testis, low in lung, colon, leukocyte, prostate and thymus and not detectable in brain, heart, liver, placenta, skeletal muscle and ovary.

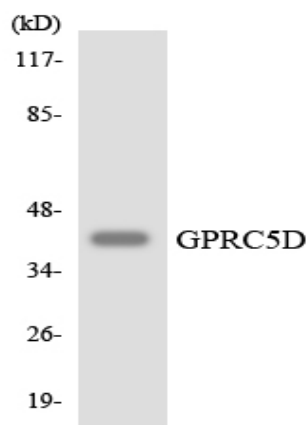
Products Images



Immunofluorescence analysis of MCF7 cells, using GPRC5D Antibody. The picture on the right is blocked with the synthesized peptide.



Western blot analysis of lysates from Jurkat cells, using GPRC5D Antibody. The lane on the right is blocked with the synthesized peptide.



Western blot analysis of the lysates from HUVEC cells using GPRC5D antibody.