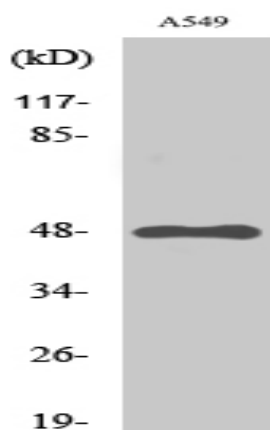


GPR83 Polyclonal Antibody

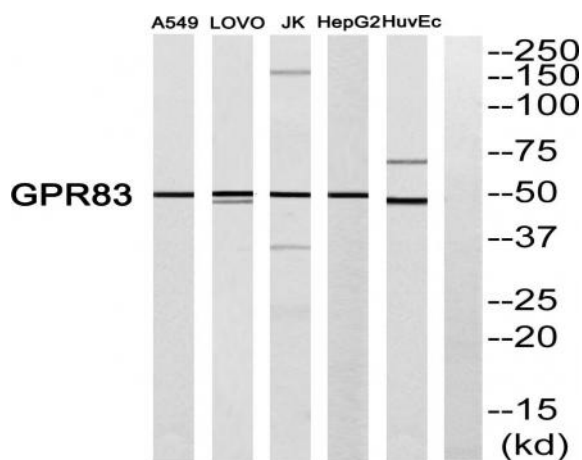
Catalog No :	YT2032
Reactivity :	Human;Rat;Mouse;
Applications :	WB;ELISA
Target :	GPR83
Fields :	>>Neuroactive ligand-receptor interaction
Gene Name :	GPR83
Protein Name :	Probable G-protein coupled receptor 83
Human Gene Id :	10888
Human Swiss Prot No :	Q9NYM4
Mouse Swiss Prot No :	P30731
Immunogen :	The antiserum was produced against synthesized peptide derived from human GPR83. AA range:361-410
Specificity :	GPR83 Polyclonal Antibody detects endogenous levels of GPR83 protein.
Formulation :	Liquid in PBS containing 50% glycerol, 0.5% BSA and 0.02% sodium azide.
Source :	Polyclonal, Rabbit,IgG
Dilution :	WB 1:500 - 1:2000. ELISA: 1:5000. Not yet tested in other applications.
Purification :	The antibody was affinity-purified from rabbit antiserum by affinity-chromatography using epitope-specific immunogen.
Concentration :	1 mg/ml
Storage Stability :	-15°C to -25°C/1 year(Do not lower than -25°C)

Observed Band :	48kD
Cell Pathway :	Neuroactive ligand-receptor interaction;
Background :	function:Orphan receptor. Could be a neuropeptide y receptor.,similarity:Belongs to the G-protein coupled receptor 1 family.,tissue specificity:Brain specific.,
Function :	function:Orphan receptor. Could be a neuropeptide y receptor.,similarity:Belongs to the G-protein coupled receptor 1 family.,tissue specificity:Brain specific.,
Subcellular Location :	Cell membrane ; Multi-pass membrane protein . Colocalizes with GPR171 in the paraventricular nucleus. Colocalizes with the ghrelin receptor GHSR1A in the hypothalamus. .
Expression :	Highly expressed in the brain and spinal cord, and found in lower concentrations in the thymus and other tissues.

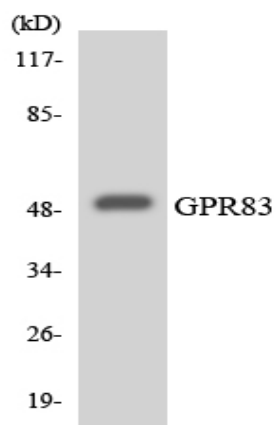
Products Images



Western Blot analysis of various cells using GPR83 Polyclonal Antibody



Western blot analysis of GPR83 Antibody. The lane on the right is blocked with the GPR83 peptide.



Western blot analysis of the lysates from HeLa cells using GPR83 antibody.