

GPR82 Polyclonal Antibody

Catalog No :	YT2031
Reactivity :	Human;Mouse
Applications :	WB;ELISA
Target :	GPR82
Gene Name :	GPR82
Protein Name :	Probable G-protein coupled receptor 82
Human Gene Id :	27197
Human Swiss Prot No :	Q96P67
Mouse Gene Id :	319200
Mouse Swiss Prot No :	Q8BZR0
Immunogen :	The antiserum was produced against synthesized peptide derived from human GPR82. AA range:121-170
Specificity :	GPR82 Polyclonal Antibody detects endogenous levels of GPR82 protein.
Formulation :	Liquid in PBS containing 50% glycerol, 0.5% BSA and 0.02% sodium azide.
Source :	Polyclonal, Rabbit,IgG
Dilution :	WB 1:500 - 1:2000. ELISA: 1:10000. Not yet tested in other applications.
Purification :	The antibody was affinity-purified from rabbit antiserum by affinity-chromatography using epitope-specific immunogen.
Concentration :	1 mg/ml
Storage Stability :	-15°C to -25°C/1 year(Do not lower than -25°C)

Observed Band : 35kD

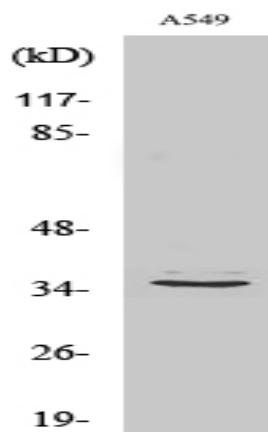
Background : The protein encoded by this gene is an orphan G protein-coupled receptor of unknown function. The encoded protein is a member of a family of proteins that contain seven transmembrane domains and transduce extracellular signals through heterotrimeric G proteins. [provided by RefSeq, Sep 2011],

Function : function:Orphan receptor.,similarity:Belongs to the G-protein coupled receptor 1 family.,

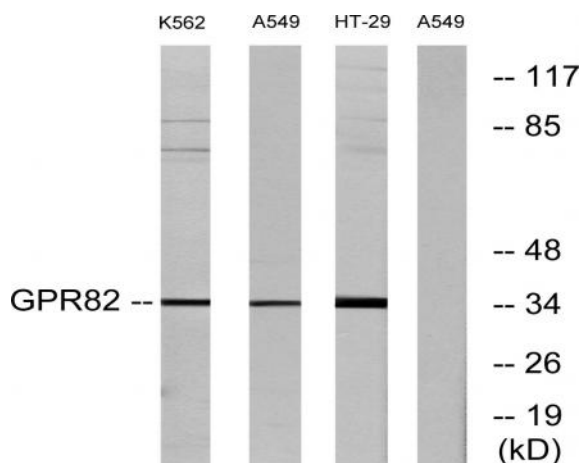
Subcellular Location : Cell membrane; Multi-pass membrane protein.

Expression : Placenta,Thyroid,

Products Images



Western Blot analysis of various cells using GPR82 Polyclonal Antibody



Western blot analysis of lysates from A549, K562, and HT-29 cells, using GPR82 Antibody. The lane on the right is blocked with the synthesized peptide.