

GPR62 Polyclonal Antibody

Catalog No :	YT2027
Reactivity :	Human;Rat;Mouse;
Applications :	WB;ELISA
Target :	GPR62
Gene Name :	GPR62
Protein Name :	Probable G-protein coupled receptor 62
Human Gene Id :	118442
Human Swiss Prot No :	Q9BZJ7
Mouse Swiss Prot No :	Q80UC6
Immunogen :	The antiserum was produced against synthesized peptide derived from human GPR62. AA range:181-230
Specificity :	GPR62 Polyclonal Antibody detects endogenous levels of GPR62 protein.
Formulation :	Liquid in PBS containing 50% glycerol, 0.5% BSA and 0.02% sodium azide.
Source :	Polyclonal, Rabbit,IgG
Dilution :	WB 1:500 - 1:2000. ELISA: 1:20000. Not yet tested in other applications.
Purification :	The antibody was affinity-purified from rabbit antiserum by affinity-chromatography using epitope-specific immunogen.
Concentration :	1 mg/ml
Storage Stability :	-15°C to -25°C/1 year(Do not lower than -25°C)
Observed Band :	38kD

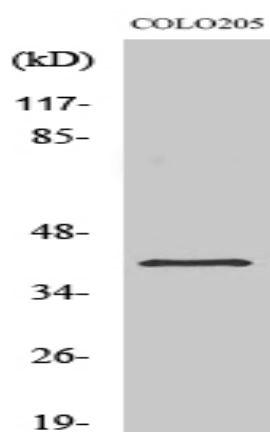
Background : function:Orphan receptor.,similarity:Belongs to the G-protein coupled receptor 1 family.,tissue specificity:Expressed in brain; detected in the basal forebrain, frontal cortex, caudate, putamen, thalamus and hippocampus.,

Function : function:Orphan receptor.,similarity:Belongs to the G-protein coupled receptor 1 family.,tissue specificity:Expressed in brain; detected in the basal forebrain, frontal cortex, caudate, putamen, thalamus and hippocampus.,

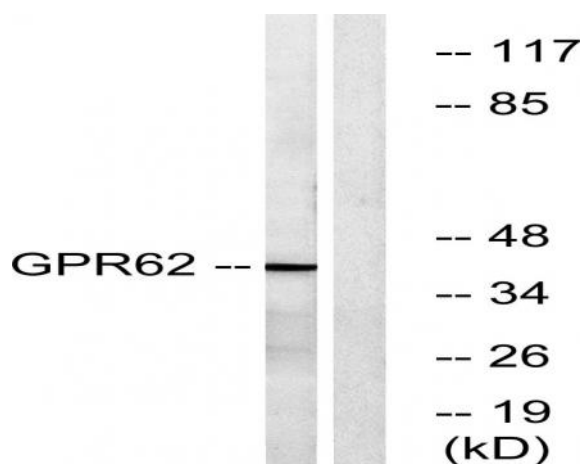
Subcellular Location : Cell membrane ; Multi-pass membrane protein . Endosome membrane ; Multi-pass membrane protein . Colocalizes with ARRB2 in the endosome (PubMed:28827538). .

Expression : Expressed in brain; detected in the basal forebrain, frontal cortex, caudate, putamen, thalamus and hippocampus.

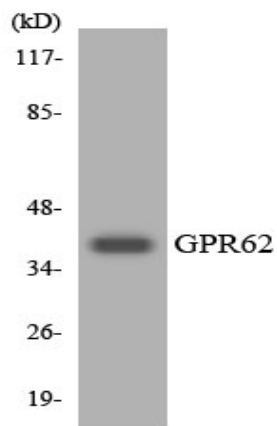
Products Images



Western Blot analysis of various cells using GPR62 Polyclonal Antibody



Western blot analysis of lysates from COLO cells, using GPR62 Antibody. The lane on the right is blocked with the synthesized peptide.



Western blot analysis of the lysates from Jurkat cells using GPR62 antibody.