

GPR34 Polyclonal Antibody

Catalog No :	YT2014
Reactivity :	Human;Mouse;Rat;Monkey
Applications :	WB;IF;ELISA
Target :	GPR34
Gene Name :	GPR34
Protein Name :	Probable G-protein coupled receptor 34
Human Gene Id :	2857
Human Swiss Prot No :	Q9UPC5
Mouse Gene Id :	23890
Mouse Swiss Prot No :	Q9R1K6
Immunogen :	The antiserum was produced against synthesized peptide derived from human GPR34. AA range:181-230
Specificity :	GPR34 Polyclonal Antibody detects endogenous levels of GPR34 protein.
Formulation :	Liquid in PBS containing 50% glycerol, 0.5% BSA and 0.02% sodium azide.
Source :	Polyclonal, Rabbit,IgG
Dilution :	WB 1:500 - 1:2000. IF 1:200 - 1:1000. ELISA: 1:10000. Not yet tested in other applications.
Purification :	The antibody was affinity-purified from rabbit antiserum by affinity-chromatography using epitope-specific immunogen.
Concentration :	1 mg/ml
Storage Stability :	-15°C to -25°C/1 year(Do not lower than -25°C)

Observed Band : 44kD

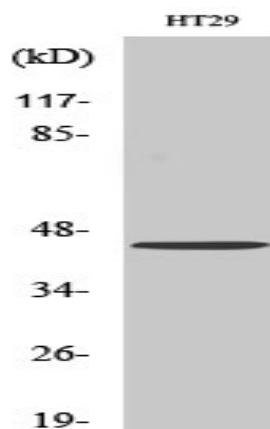
Background : G protein-coupled receptors (GPCRs), such as GPR34, are integral membrane proteins containing 7 putative transmembrane domains (TMs). These proteins mediate signals to the interior of the cell via activation of heterotrimeric G proteins that in turn activate various effector proteins, ultimately resulting in a physiologic response.[supplied by OMIM, Apr 2006],

Function : function:Orphan receptor.,similarity:Belongs to the G-protein coupled receptor 1 family.,tissue specificity:Broadly expressed.,

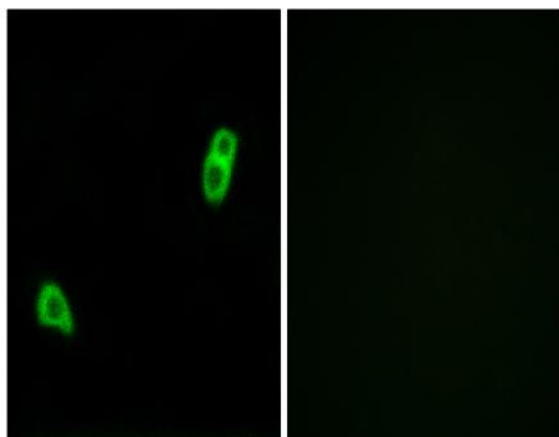
Subcellular Location : Cell membrane ; Multi-pass membrane protein .

Expression : Broadly expressed.

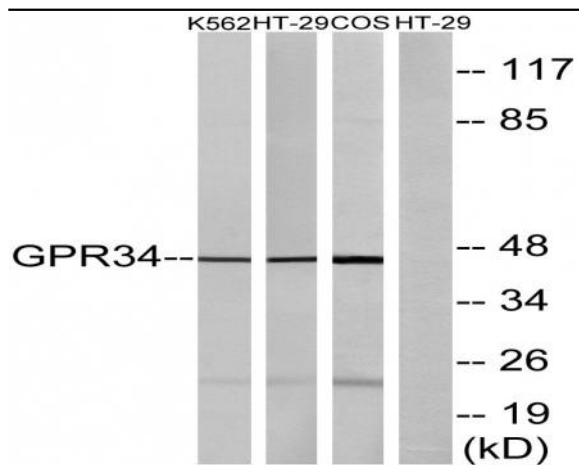
Products Images



Western Blot analysis of various cells using GPR34 Polyclonal Antibody



Immunofluorescence analysis of LOVO cells, using GPR34 Antibody. The picture on the right is blocked with the synthesized peptide.



Western blot analysis of lysates from HT-29, K562, and COS7 cells, using GPR34 Antibody. The lane on the right is blocked with the synthesized peptide.