

## GPR25 Polyclonal Antibody

<b>Catalog No :</b>	YT2010
<b>Reactivity :</b>	Human;Rat;Mouse;
<b>Applications :</b>	WB;ELISA
<b>Target :</b>	GPR25
<b>Gene Name :</b>	GPR25
<b>Protein Name :</b>	Probable G-protein coupled receptor 25
<b>Human Gene Id :</b>	2848
<b>Human Swiss Prot No :</b>	O00155
<b>Mouse Swiss Prot No :</b>	P0C5I1
<b>Immunogen :</b>	The antiserum was produced against synthesized peptide derived from human GPR25. AA range:193-242
<b>Specificity :</b>	GPR25 Polyclonal Antibody detects endogenous levels of GPR25 protein.
<b>Formulation :</b>	Liquid in PBS containing 50% glycerol, 0.5% BSA and 0.02% sodium azide.
<b>Source :</b>	Polyclonal, Rabbit,IgG
<b>Dilution :</b>	WB 1:500 - 1:2000. ELISA: 1:5000. Not yet tested in other applications.
<b>Purification :</b>	The antibody was affinity-purified from rabbit antiserum by affinity-chromatography using epitope-specific immunogen.
<b>Concentration :</b>	1 mg/ml
<b>Storage Stability :</b>	-15°C to -25°C/1 year(Do not lower than -25°C)
<b>Observed Band :</b>	38kD

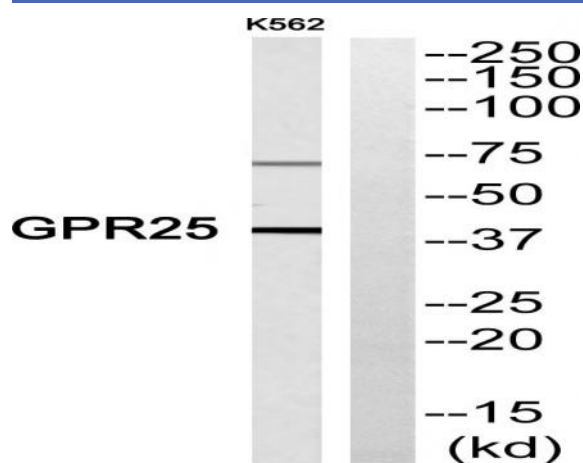
**Background :** This gene is intronless and encodes a member of the G-protein coupled receptor 1 family. G-protein coupled receptors are membrane proteins which activate signaling cascades as a response to extracellular stress. This gene has been linked to arterial stiffness. [provided by RefSeq, Nov 2012],

**Function :** function:Orphan receptor.,similarity:Belongs to the G-protein coupled receptor 1 family.,

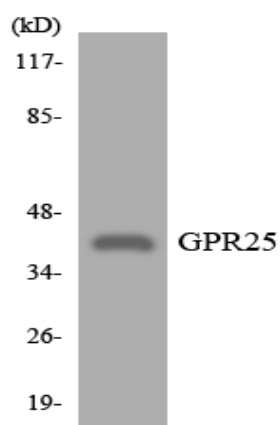
**Subcellular Location :** Cell membrane; Multi-pass membrane protein.

**Expression :** Brain,

## Products Images



Western blot analysis of GPR25 Antibody. The lane on the right is blocked with the GPR25 peptide.



Western blot analysis of the lysates from K562 cells using GPR25 antibody.