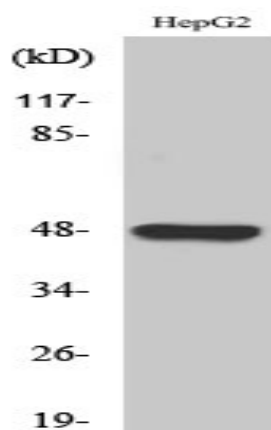


GPR19 Polyclonal Antibody

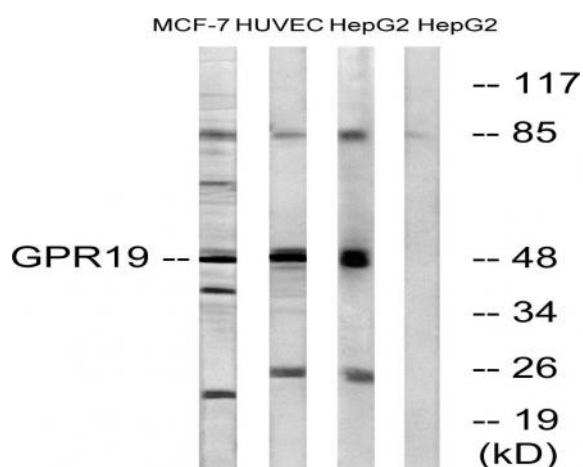
Catalog No :	YT2007
Reactivity :	Human;Mouse;Rat
Applications :	WB;IHC;IF;ELISA
Target :	GPR19
Gene Name :	GPR19
Protein Name :	Probable G-protein coupled receptor 19
Human Gene Id :	2842
Human Swiss Prot No :	Q15760
Mouse Gene Id :	14760
Mouse Swiss Prot No :	Q61121
Rat Gene Id :	312787
Rat Swiss Prot No :	P70585
Immunogen :	The antiserum was produced against synthesized peptide derived from human GPR19. AA range:361-410
Specificity :	GPR19 Polyclonal Antibody detects endogenous levels of GPR19 protein.
Formulation :	Liquid in PBS containing 50% glycerol, 0.5% BSA and 0.02% sodium azide.
Source :	Polyclonal, Rabbit,IgG
Dilution :	WB 1:500 - 1:2000. IHC 1:100 - 1:300. IF 1:200 - 1:1000. ELISA: 1:5000. Not yet tested in other applications.
Purification :	The antibody was affinity-purified from rabbit antiserum by affinity-chromatography using epitope-specific immunogen.

Concentration :	1 mg/ml
Storage Stability :	-15°C to -25°C/1 year(Do not lower than -25°C)
Observed Band :	47kD
Background :	function:Orphan receptor.,similarity:Belongs to the G-protein coupled receptor 1 family.,tissue specificity:Abundant expression in the brain.,
Function :	function:Orphan receptor.,similarity:Belongs to the G-protein coupled receptor 1 family.,tissue specificity:Abundant expression in the brain.,
Subcellular Location :	Cell membrane; Multi-pass membrane protein.
Expression :	Abundant expression in the brain.

Products Images



Western Blot analysis of various cells using GPR19 Polyclonal Antibody cells nucleus extracted by Minute TM Cytoplasmic and Nuclear Fractionation kit (SC-003, Inventbiotech, MN, USA).



Western blot analysis of lysates from MCF-7, HUVEC, and HepG2 cells, using GPR19 Antibody. The lane on the right is blocked with the synthesized peptide.