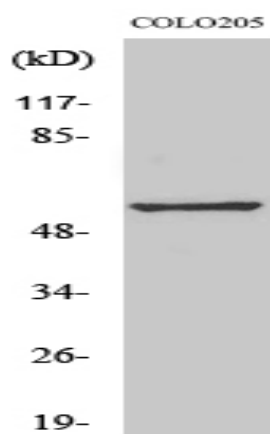


GPR176 Polyclonal Antibody

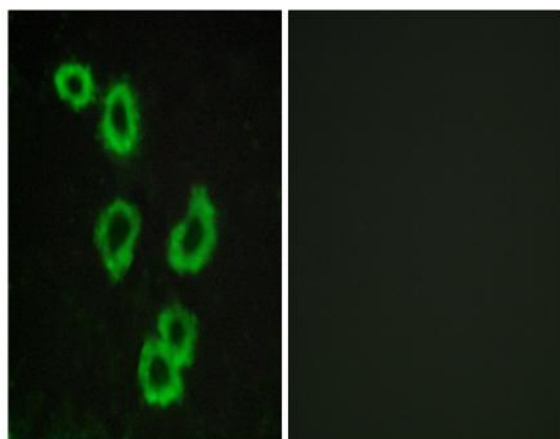
Catalog No :	YT2003
Reactivity :	Human;Mouse;Rat
Applications :	WB;IF;ELISA
Target :	GPR176
Gene Name :	GPR176
Protein Name :	Probable G-protein coupled receptor 176
Human Gene Id :	11245
Human Swiss Prot No :	Q14439
Mouse Gene Id :	381413
Mouse Swiss Prot No :	Q80WT4
Rat Gene Id :	117257
Rat Swiss Prot No :	Q64017
Immunogen :	The antiserum was produced against synthesized peptide derived from human GPR176. AA range:466-515
Specificity :	GPR176 Polyclonal Antibody detects endogenous levels of GPR176 protein.
Formulation :	Liquid in PBS containing 50% glycerol, 0.5% BSA and 0.02% sodium azide.
Source :	Polyclonal, Rabbit,IgG
Dilution :	WB 1:500 - 1:2000. IF 1:200 - 1:1000. ELISA: 1:10000. Not yet tested in other applications.
Purification :	The antibody was affinity-purified from rabbit antiserum by affinity-chromatography using epitope-specific immunogen.

Concentration :	1 mg/ml
Storage Stability :	-15°C to -25°C/1 year(Do not lower than -25°C)
Observed Band :	57kD
Background :	Members of the G protein-coupled receptor family, such as GPR176, are cell surface receptors involved in responses to hormones, growth factors, and neurotransmitters (Hata et al., 1995 [PubMed 7893747]).[supplied by OMIM, Jul 2008],
Function :	function:Orphan receptor.,similarity:Belongs to the G-protein coupled receptor 1 family.,
Subcellular Location :	Cell membrane ; Multi-pass membrane protein .
Expression :	Fetal brain,Ovary,

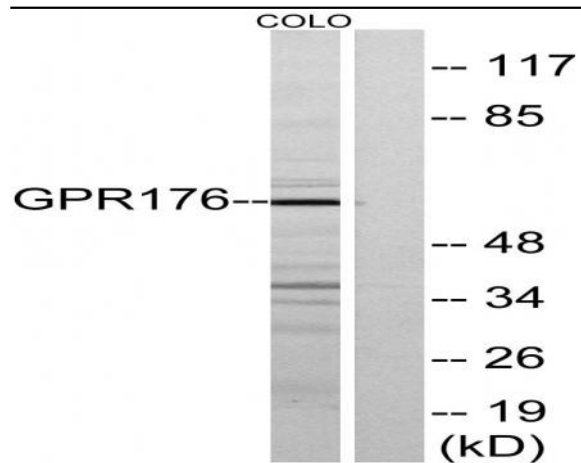
Products Images



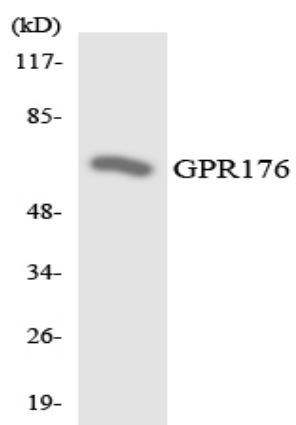
Western Blot analysis of various cells using GPR176 Polyclonal Antibody



Immunofluorescence analysis of MCF7 cells, using GPR176 Antibody. The picture on the right is blocked with the synthesized peptide.



Western blot analysis of lysates from COLO205 cells, using GPR176 Antibody. The lane on the right is blocked with the synthesized peptide.



Western blot analysis of the lysates from HeLa cells using GPR176 antibody.