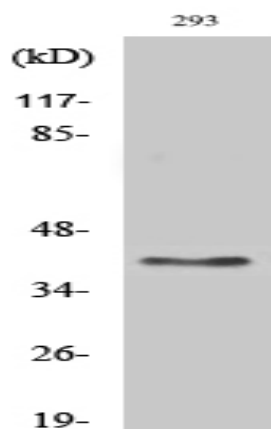


GPR175 Polyclonal Antibody

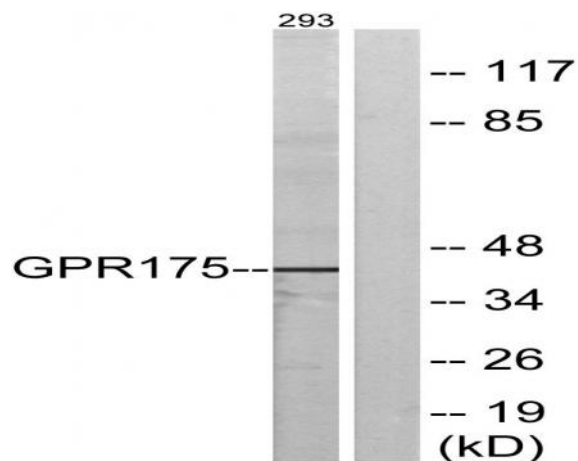
Catalog No :	YT2002
Reactivity :	Human;Mouse;Rat
Applications :	WB;IF;ELISA
Target :	GPR175
Gene Name :	TPRA1
Protein Name :	Transmembrane protein adipocyte-associated 1
Human Gene Id :	131601
Human Swiss Prot No :	Q86W33
Mouse Gene Id :	24100
Mouse Swiss Prot No :	Q99MU1
Rat Gene Id :	85494
Rat Swiss Prot No :	Q791F6
Immunogen :	The antiserum was produced against synthesized peptide derived from human GPR175. AA range:198-247
Specificity :	GPR175 Polyclonal Antibody detects endogenous levels of GPR175 protein.
Formulation :	Liquid in PBS containing 50% glycerol, 0.5% BSA and 0.02% sodium azide.
Source :	Polyclonal, Rabbit,IgG
Dilution :	WB 1:500 - 1:2000. IF 1:200 - 1:1000. ELISA: 1:20000. Not yet tested in other applications.
Purification :	The antibody was affinity-purified from rabbit antiserum by affinity-chromatography using epitope-specific immunogen.

Concentration :	1 mg/ml
Storage Stability :	-15°C to -25°C/1 year(Do not lower than -25°C)
Observed Band :	41kD
Background :	TPRA1 is a gene on chromosome 3q21.3 that encodes transmembrane protein adipocyte-associated 1 expressed in most tissues, especially in heart, placenta and kidney, and plays role in lipid metabolism and in ageing. Gene Ontology (GO) annotations related to this gene include G-protein coupled receptor activity.
Function :	aging,
Subcellular Location :	Membrane; Multi-pass membrane protein.
Expression :	Ubiquitous, with higher levels in heart, placenta and kidney.

Products Images



Western blot analysis of various cells using GPR175 Polyclonal Antibody diluted at 1:2000



Western blot analysis of lysates from 293 cells, using GPR175 Antibody. The lane on the right is blocked with the synthesized peptide.