

GPR174 Polyclonal Antibody

Catalog No :	YT2000
Reactivity :	Human;Rat;Mouse;
Applications :	WB;IF;ELISA
Target :	GPR174
Gene Name :	GPR174
Protein Name :	Probable G-protein coupled receptor 174
Human Gene Id :	84636
Human Swiss Prot No :	Q9BXC1
Mouse Swiss Prot No :	Q3U507
Immunogen :	The antiserum was produced against synthesized peptide derived from human GPR174. AA range:131-180
Specificity :	GPR174 Polyclonal Antibody detects endogenous levels of GPR174 protein.
Formulation :	Liquid in PBS containing 50% glycerol, 0.5% BSA and 0.02% sodium azide.
Source :	Polyclonal, Rabbit,IgG
Dilution :	WB 1:500 - 1:2000. IF 1:200 - 1:1000. ELISA: 1:40000. Not yet tested in other applications.
Purification :	The antibody was affinity-purified from rabbit antiserum by affinity-chromatography using epitope-specific immunogen.
Concentration :	1 mg/ml
Storage Stability :	-15°C to -25°C/1 year(Do not lower than -25°C)
Observed Band :	39kD

Background :

This gene encodes a protein belonging to the G protein-coupled receptor superfamily. These proteins are characterized by the presence of seven alpha-helical transmembrane domains, and they activate or interact with various endogenous or exogenous ligands, including neurotransmitters, hormones, and odorant and taste substances. This family member is classified as an orphan receptor because the cognate ligand has not been identified. [provided by RefSeq, Sep 2011],

Function :

function:Putative receptor for purines coupled to G-proteins.,similarity:Belongs to the G-protein coupled receptor 1 family.,

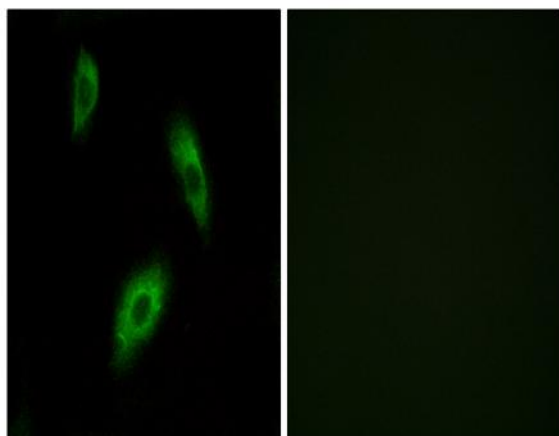
Subcellular Location :

Cell membrane; Multi-pass membrane protein.

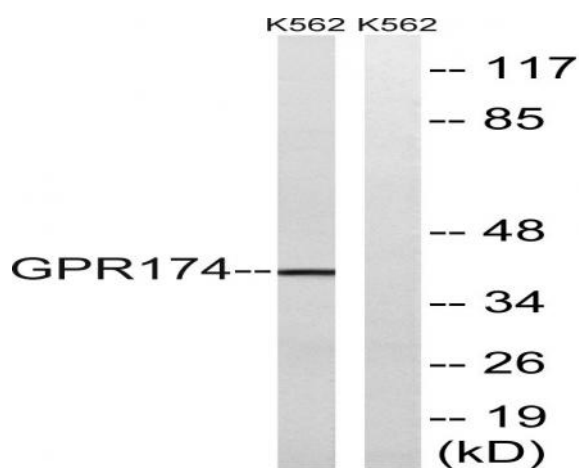
Expression :

Brain,

Products Images



Immunofluorescence analysis of LOVO cells, using GPR174 Antibody. The picture on the right is blocked with the synthesized peptide.



Western blot analysis of lysates from K562 cells, using GPR174 Antibody. The lane on the right is blocked with the synthesized peptide.