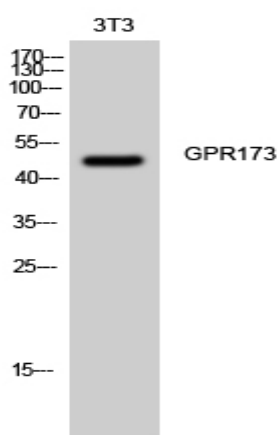


GPR173 Polyclonal Antibody

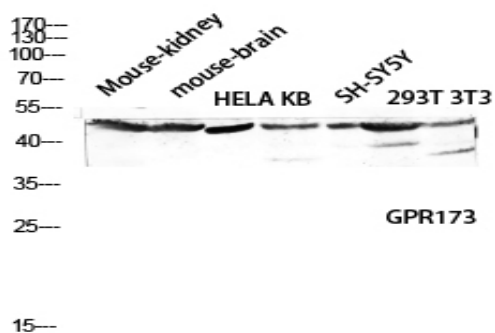
Catalog No :	YT1998
Reactivity :	Human;Mouse;Rat
Applications :	WB;IF;ELISA
Target :	GPR173
Gene Name :	GPR173
Protein Name :	Probable G-protein coupled receptor 173
Human Gene Id :	54328
Human Swiss Prot No :	Q9NS66
Mouse Gene Id :	70771
Mouse Swiss Prot No :	Q6PI62
Rat Gene Id :	64021
Rat Swiss Prot No :	Q9JJH2
Immunogen :	The antiserum was produced against synthesized peptide derived from human GPR173. AA range:251-300
Specificity :	GPR173 Polyclonal Antibody detects endogenous levels of GPR173 protein.
Formulation :	Liquid in PBS containing 50% glycerol, 0.5% BSA and 0.02% sodium azide.
Source :	Polyclonal, Rabbit,IgG
Dilution :	WB 1:500 - 1:2000. IF 1:200 - 1:1000. ELISA: 1:10000. Not yet tested in other applications.
Purification :	The antibody was affinity-purified from rabbit antiserum by affinity-chromatography using epitope-specific immunogen.

Concentration :	1 mg/ml
Storage Stability :	-15°C to -25°C/1 year(Do not lower than -25°C)
Observed Band :	47kD
Background :	This gene encodes a member of the G-protein coupled receptor 1 family. This protein contains 7 transmembrane domains and conserved cysteine residues. [provided by RefSeq, Nov 2009],
Function :	function:Orphan receptor.,similarity:Belongs to the G-protein coupled receptor 1 family.,tissue specificity:Expressed at high levels in brain and ovary. Lower levels in small intestine. In brain regions, detected in all regions tested. Highest levels in the cerebellum and cerebral cortex.,
Subcellular Location :	Cell membrane ; Multi-pass membrane protein .
Expression :	Expressed in the ovary, specifically in granulosa cells of follicles that have passed the primary stage and in oocytes (at protein level) (PubMed:30933929). Expressed at high levels in brain. Lower levels in small intestine. In brain regions, detected in all regions tested. Highest levels in the cerebellum and cerebral cortex.

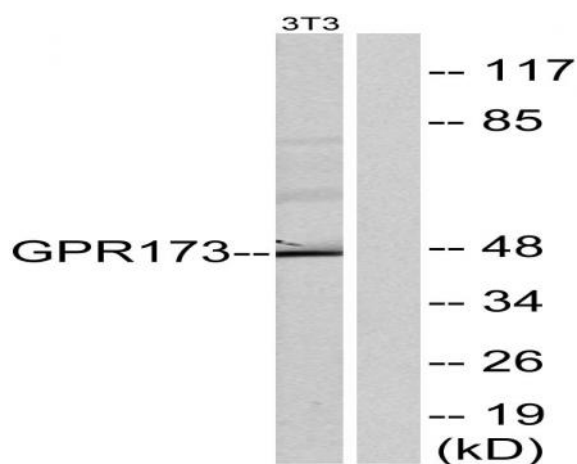
Products Images



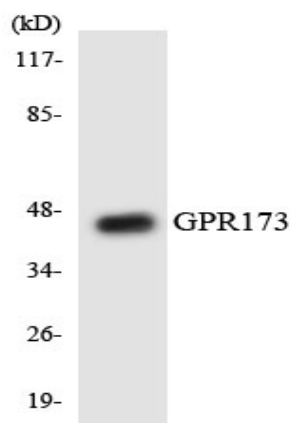
Western Blot analysis of 3T3 cells using GPR173 Polyclonal Antibody diluted at 1:2000



Western blot analysis of Mouse-kidney mouse-brain HELA KB SH-SY5Y 293T 3T3 lysis using GPR173 antibody. Antibody was diluted at 1:2000



Western blot analysis of lysates from NIH/3T3 cells, using GPR173 Antibody. The lane on the right is blocked with the synthesized peptide.



Western blot analysis of the lysates from COLO205 cells using GPR173 antibody.