

GPR171 Polyclonal Antibody

Catalog No :	YT1993
Reactivity :	Human;Rat;Mouse;
Applications :	WB;IF;ELISA
Target :	GPR171
Gene Name :	GPR171
Protein Name :	Probable G-protein coupled receptor 171
Human Gene Id :	29909
Human Swiss Prot No :	O14626
Mouse Swiss Prot No :	Q8BG55
Immunogen :	The antiserum was produced against synthesized peptide derived from human GPR171. AA range:181-230
Specificity :	GPR171 Polyclonal Antibody detects endogenous levels of GPR171 protein.
Formulation :	Liquid in PBS containing 50% glycerol, 0.5% BSA and 0.02% sodium azide.
Source :	Polyclonal, Rabbit,IgG
Dilution :	WB 1:500 - 1:2000. IF 1:200 - 1:1000. ELISA: 1:10000. Not yet tested in other applications.
Purification :	The antibody was affinity-purified from rabbit antiserum by affinity-chromatography using epitope-specific immunogen.
Concentration :	1 mg/ml
Storage Stability :	-15°C to -25°C/1 year(Do not lower than -25°C)
Observed Band :	36kD

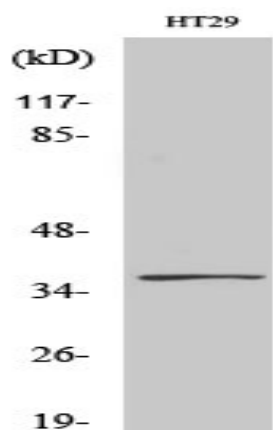
Background : function:Orphan receptor.,similarity:Belongs to the G-protein coupled receptor 1 family.,

Function : function:Orphan receptor.,similarity:Belongs to the G-protein coupled receptor 1 family.,

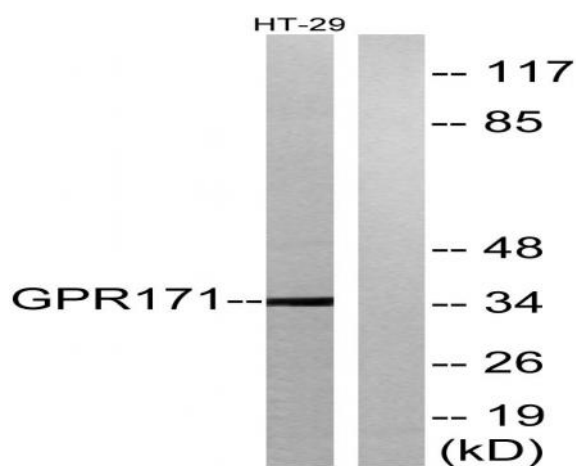
Subcellular Location : Cell membrane ; Multi-pass membrane protein . Colocalized with GPR83 in the paraventricular nucleus. .

Expression : Expressed in both T-cell subsets and natural killer cells, while it is undetectable in B cells or CD14(+) monocytes. Expressed in peripheral blood mononuclear cells (PBMC) and Jurkat cells (at protein level).

Products Images



Western blot analysis of various cells using GPR171 Polyclonal Antibody



Western blot analysis of lysates from HT-29 cells, using GPR171 Antibody. The lane on the right is blocked with the synthesized peptide.