

GPR160 Polyclonal Antibody

Catalog No :	YT1990
Reactivity :	Human;Rat;Mouse;
Applications :	WB;IHC;IF;ELISA
Target :	GPR160
Gene Name :	GPR160
Protein Name :	Probable G-protein coupled receptor 160
Human Gene Id :	26996
Human Swiss Prot No :	Q9UJ42
Mouse Swiss Prot No :	Q3U3F9
Immunogen :	The antiserum was produced against synthesized peptide derived from human GPR160. AA range:289-338
Specificity :	GPR160 Polyclonal Antibody detects endogenous levels of GPR160 protein.
Formulation :	Liquid in PBS containing 50% glycerol, 0.5% BSA and 0.02% sodium azide.
Source :	Polyclonal, Rabbit,IgG
Dilution :	WB 1:500 - 1:2000. IHC 1:100 - 1:300. IF 1:200 - 1:1000. ELISA: 1:10000. Not yet tested in other applications.
Purification :	The antibody was affinity-purified from rabbit antiserum by affinity-chromatography using epitope-specific immunogen.
Concentration :	1 mg/ml
Storage Stability :	-15°C to -25°C/1 year(Do not lower than -25°C)
Observed Band :	38kD

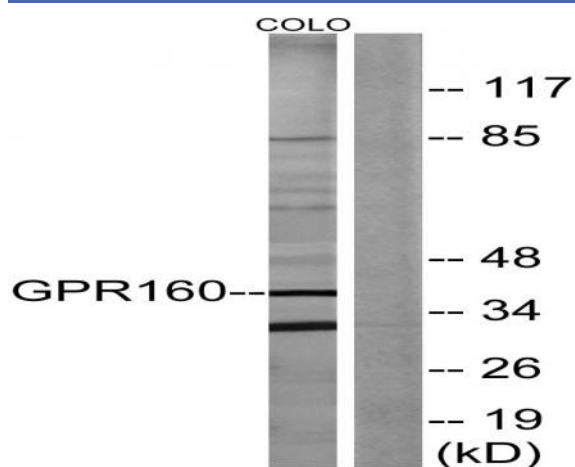
Background : function:Orphan receptor.,similarity:Belongs to the G-protein coupled receptor 1 family.,

Function : function:Orphan receptor.,similarity:Belongs to the G-protein coupled receptor 1 family.,

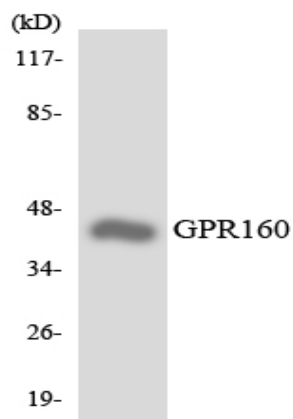
Subcellular Location : Cell membrane; Multi-pass membrane protein.

Expression : Cervix,Pancreas,

Products Images



Western blot analysis of lysates from COLO205 cells, using GPR160 Antibody. The lane on the right is blocked with the synthesized peptide.



Western blot analysis of the lysates from HUVECcells using GPR160 antibody.