

GPR149 Polyclonal Antibody

| | |
|------------------------------|---|
| Catalog No : | YT1977 |
| Reactivity : | Human;Rat;Mouse; |
| Applications : | WB;IHC;IF;ELISA |
| Target : | GPR149 |
| Gene Name : | GPR149 |
| Protein Name : | Probable G-protein coupled receptor 149 |
| Human Gene Id : | 344758 |
| Human Swiss Prot No : | Q86SP6 |
| Mouse Swiss Prot No : | Q3UVY1 |
| Immunogen : | The antiserum was produced against synthesized peptide derived from human GPR149. AA range:451-500 |
| Specificity : | GPR149 Polyclonal Antibody detects endogenous levels of GPR149 protein. |
| Formulation : | Liquid in PBS containing 50% glycerol, 0.5% BSA and 0.02% sodium azide. |
| Source : | Polyclonal, Rabbit,IgG |
| Dilution : | WB 1:500 - 1:2000. IHC 1:100 - 1:300. IF 1:200 - 1:1000. ELISA: 1:5000. Not yet tested in other applications. |
| Purification : | The antibody was affinity-purified from rabbit antiserum by affinity-chromatography using epitope-specific immunogen. |
| Concentration : | 1 mg/ml |
| Storage Stability : | -15°C to -25°C/1 year(Do not lower than -25°C) |
| Observed Band : | 81kD |

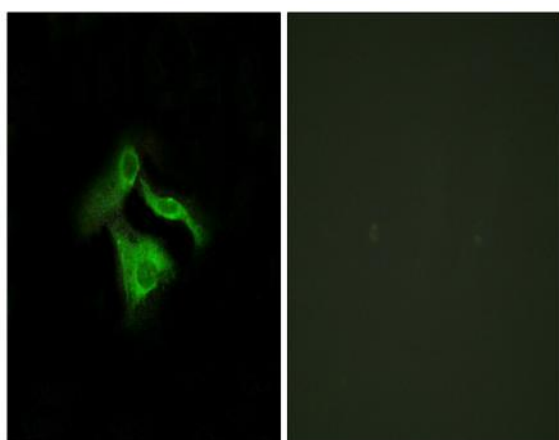
Background : function:Orphan receptor.,similarity:Belongs to the G-protein coupled receptor 1 family.,

Function : function:Orphan receptor.,similarity:Belongs to the G-protein coupled receptor 1 family.,

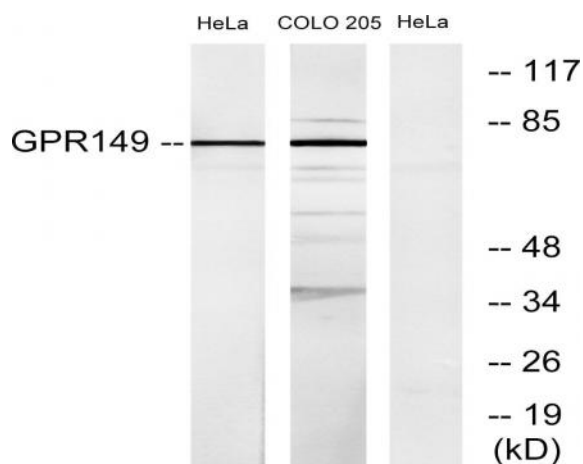
Subcellular Location : Cell membrane; Multi-pass membrane protein.

Expression : Brain,

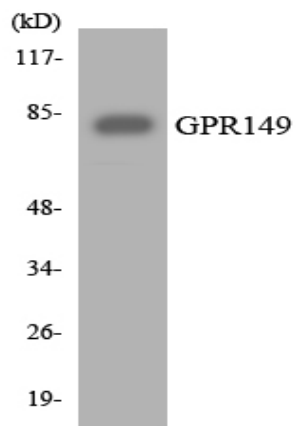
Products Images



Immunofluorescence analysis of HeLa cells, using GPR149 Antibody. The picture on the right is blocked with the synthesized peptide.



Western blot analysis of lysates from HeLa and COLO205 cells, using GPR149 Antibody. The lane on the right is blocked with the synthesized peptide.



Western blot analysis of the lysates from 293 cells using GPR149 antibody.