

GPR137C Polyclonal Antibody

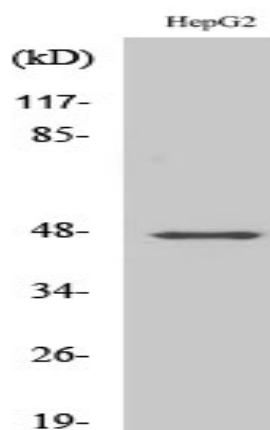
Catalog No :	YT1971
Reactivity :	Human;Rat;Mouse;
Applications :	WB;IHC;IF;ELISA
Target :	GPR137C
Gene Name :	GPR137C
Protein Name :	Integral membrane protein GPR137C
Human Gene Id :	283554
Human Swiss Prot No :	Q8N3F9
Immunogen :	The antiserum was produced against synthesized peptide derived from human GPR137C. AA range:256-305
Specificity :	GPR137C Polyclonal Antibody detects endogenous levels of GPR137C protein.
Formulation :	Liquid in PBS containing 50% glycerol, 0.5% BSA and 0.02% sodium azide.
Source :	Polyclonal, Rabbit,IgG
Dilution :	WB 1:500 - 1:2000. IHC 1:100 - 1:300. IF 1:200 - 1:1000. ELISA: 1:10000. Not yet tested in other applications.
Purification :	The antibody was affinity-purified from rabbit antiserum by affinity-chromatography using epitope-specific immunogen.
Concentration :	1 mg/ml
Storage Stability :	-15°C to -25°C/1 year(Do not lower than -25°C)
Observed Band :	45kD
Background :	similarity:Belongs to the GPR137 family.,

Function : similarity:Belongs to the GPR137 family.,

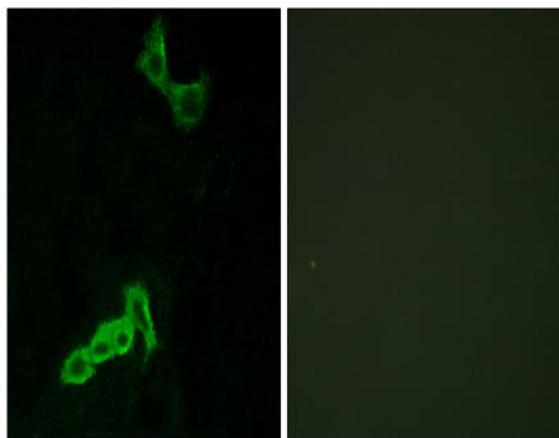
Subcellular Location : Lysosome membrane ; Multi-pass membrane protein .

Expression : Melanoma,Small intestine,

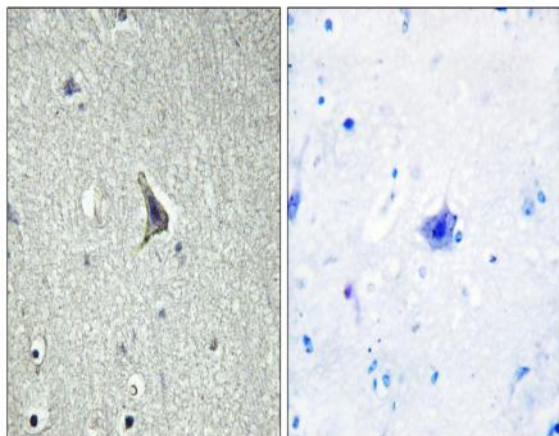
Products Images



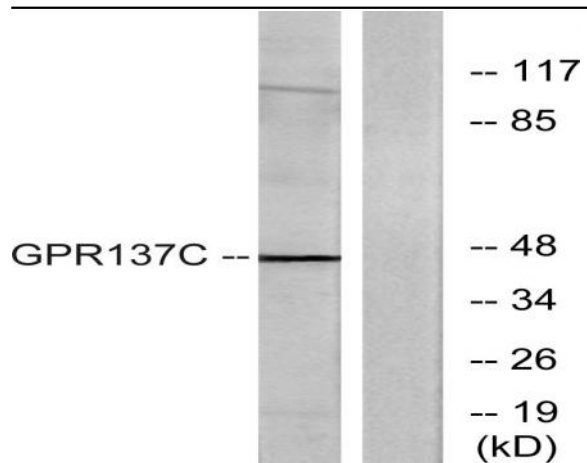
Western Blot analysis of various cells using GPR137C Polyclonal Antibody



Immunofluorescence analysis of MCF7 cells, using GPR137C Antibody. The picture on the right is blocked with the synthesized peptide.



Immunohistochemistry analysis of paraffin-embedded human brain tissue, using GPR137C Antibody. The picture on the right is blocked with the synthesized peptide.



Western blot analysis of lysates from HepG2 cells, using GPR137C Antibody. The lane on the right is blocked with the synthesized peptide.