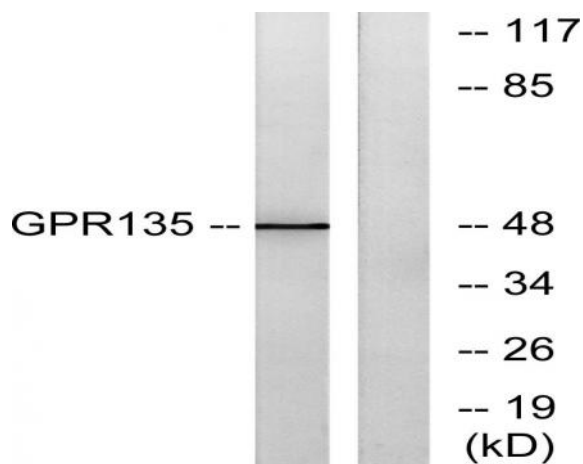


GPR135 Polyclonal Antibody

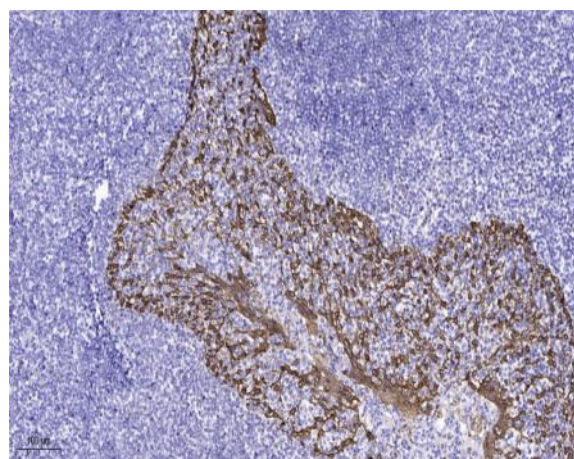
Catalog No :	YT1970
Reactivity :	Human;Mouse;Rat
Applications :	WB;IHC;IF;ELISA
Target :	GPR135
Gene Name :	GPR135
Protein Name :	Probable G-protein coupled receptor 135
Human Gene Id :	64582
Human Swiss Prot No :	Q8IZ08
Mouse Gene Id :	238252
Mouse Swiss Prot No :	Q7TQP2
Rat Gene Id :	314213
Rat Swiss Prot No :	Q7TQN7
Immunogen :	The antiserum was produced against synthesized peptide derived from human GPR135. AA range:371-420
Specificity :	GPR135 Polyclonal Antibody detects endogenous levels of GPR135 protein.
Formulation :	Liquid in PBS containing 50% glycerol, 0.5% BSA and 0.02% sodium azide.
Source :	Polyclonal, Rabbit,IgG
Dilution :	WB 1:500 - 1:2000. IHC 1:100 - 1:300. IF 1:200 - 1:1000. ELISA: 1:5000. Not yet tested in other applications.
Purification :	The antibody was affinity-purified from rabbit antiserum by affinity-chromatography using epitope-specific immunogen.

Concentration :	1 mg/ml
Storage Stability :	-15°C to -25°C/1 year(Do not lower than -25°C)
Observed Band :	48kD
Background :	function:Orphan receptor.,similarity:Belongs to the G-protein coupled receptor 1 family.,
Function :	function:Orphan receptor.,similarity:Belongs to the G-protein coupled receptor 1 family.,
Subcellular Location :	Cell membrane ; Multi-pass membrane protein . Endosome membrane ; Multi-pass membrane protein . Colocalizes with ARRB2/beta-arrestin-2 in the endosome. .
Expression :	Testis,

Products Images



Western blot analysis of lysates from NIH/3T3 cells, using GPR135 Antibody. The lane on the right is blocked with the synthesized peptide.



Immunohistochemical analysis of paraffin-embedded human tonsil. 1, Antibody was diluted at 1:200(4° overnight). 2, Tris-EDTA,pH9.0 was used for antigen retrieval. 3,Secondary antibody was diluted at 1:200(room temperature, 45min).