

GPR119 Polyclonal Antibody

Catalog No :	YT1962
Reactivity :	Human;Rat;Mouse;
Applications :	WB;IF;ELISA
Target :	GPR119
Fields :	>>cAMP signaling pathway;>>Insulin secretion
Gene Name :	GPR119
Protein Name :	Glucose-dependent insulintropic receptor
Human Gene Id :	139760
Human Swiss Prot No :	Q8TDV5
Mouse Swiss Prot No :	Q7TQP3
Immunogen :	The antiserum was produced against synthesized peptide derived from human GPR119. AA range:186-235
Specificity :	GPR119 Polyclonal Antibody detects endogenous levels of GPR119 protein.
Formulation :	Liquid in PBS containing 50% glycerol, 0.5% BSA and 0.02% sodium azide.
Source :	Polyclonal, Rabbit,IgG
Dilution :	WB 1:500 - 1:2000. IF 1:200 - 1:1000. ELISA: 1:10000. Not yet tested in other applications.
Purification :	The antibody was affinity-purified from rabbit antiserum by affinity-chromatography using epitope-specific immunogen.
Concentration :	1 mg/ml
Storage Stability :	-15°C to -25°C/1 year(Do not lower than -25°C)

Observed Band : 37kD

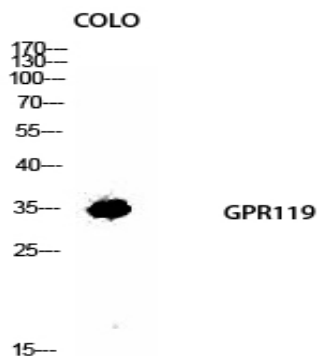
Background : This gene encodes a member of the rhodopsin subfamily of G-protein-coupled receptors that is expressed in the pancreas and gastrointestinal tract. The encoded protein is activated by lipid amides including lysophosphatidylcholine and oleoylethanolamide and may be involved in glucose homeostasis. This protein is a potential drug target in the treatment of type 2 diabetes.[provided by RefSeq, Jan 2010],

Function : function:Receptor for the endogenous fatty-acid ethanolamide oleoylethanolamide (OEA) and lysophosphatidylcholine (LPC). Functions as a glucose-dependent insulinotropic receptor. The activity of this receptor is mediated by G proteins which activate adenylate cyclase. Seems to act through a G(s) mediated pathway.,similarity:Belongs to the G-protein coupled receptor 1 family.,tissue specificity:Predominantly expressed in the pancreas, especially in the islets.,

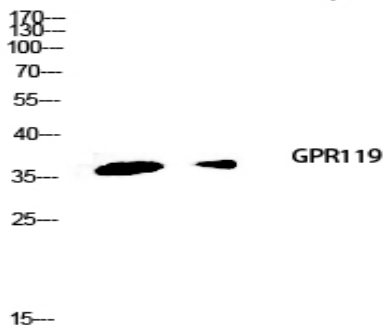
Subcellular Location : Cell membrane; Multi-pass membrane protein.

Expression : Predominantly expressed in the pancreas, especially in the islets.

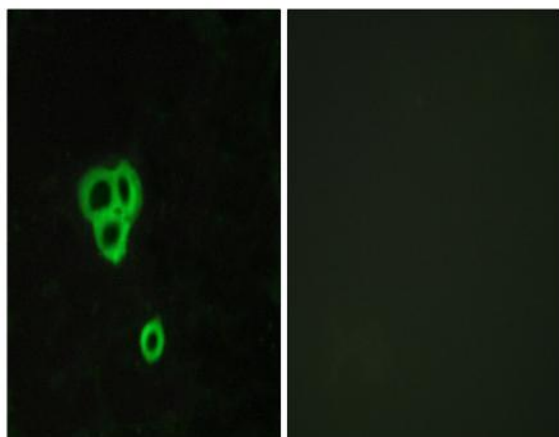
Products Images



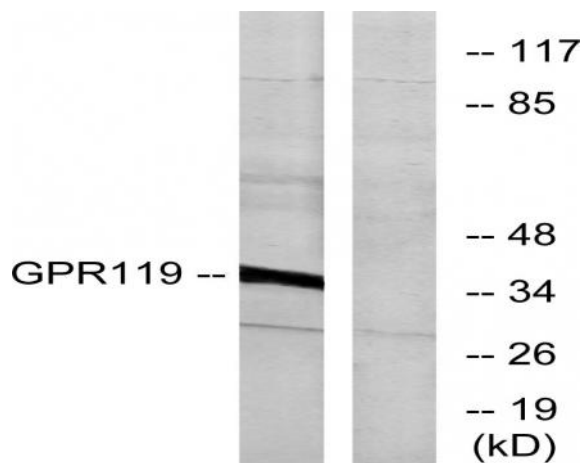
Western Blot analysis of COLO cells using GPR119 Polyclonal Antibody diluted at 1:1000

SH-SY5Y mouse-kidney


Western blot analysis of SH-SY5Y mouse-kidney lysis using GPR119 antibody. Antibody was diluted at 1:1000



Immunofluorescence analysis of MCF7 cells, using GPR119 Antibody. The picture on the right is blocked with the synthesized peptide.



Western blot analysis of lysates from K562 cells, using GPR119 Antibody. The lane on the right is blocked with the synthesized peptide.