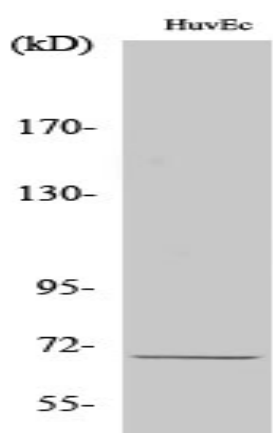


GPR107 Polyclonal Antibody

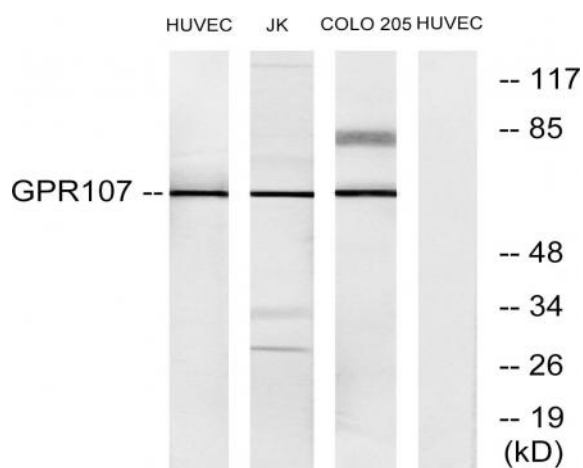
Catalog No :	YT1953
Reactivity :	Human;Rat;Mouse;
Applications :	WB;IHC;IF;ELISA
Target :	GPR107
Gene Name :	GPR107
Protein Name :	Protein GPR107
Human Gene Id :	57720
Human Swiss Prot No :	Q5VW38
Mouse Swiss Prot No :	Q8BUV8
Immunogen :	The antiserum was produced against synthesized peptide derived from human GPR107. AA range:141-190
Specificity :	GPR107 Polyclonal Antibody detects endogenous levels of GPR107 protein.
Formulation :	Liquid in PBS containing 50% glycerol, 0.5% BSA and 0.02% sodium azide.
Source :	Polyclonal, Rabbit,IgG
Dilution :	WB 1:500 - 1:2000. IHC 1:100 - 1:300. IF 1:200 - 1:1000. ELISA: 1:5000. Not yet tested in other applications.
Purification :	The antibody was affinity-purified from rabbit antiserum by affinity-chromatography using epitope-specific immunogen.
Concentration :	1 mg/ml
Storage Stability :	-15°C to -25°C/1 year(Do not lower than -25°C)
Observed Band :	67kD

Background :	similarity:Belongs to the LU7TM family.,
Function :	similarity:Belongs to the LU7TM family.,
Subcellular Location :	Cell membrane ; Multi-pass membrane protein . Golgi apparatus, trans-Golgi network membrane .
Expression :	Brain,Gastric cancer,Lymph node,Small intestine,

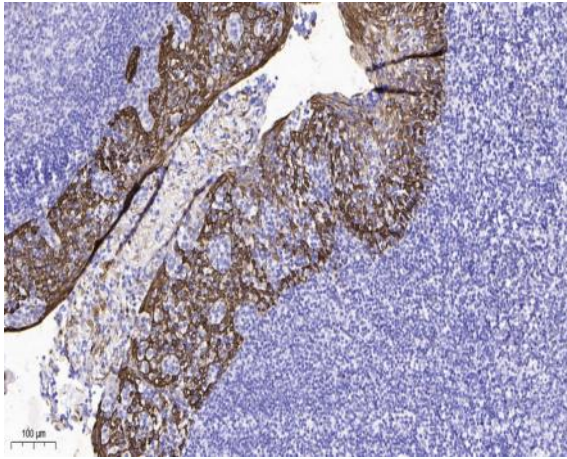
Products Images



Western Blot analysis of various cells using GPR107 Polyclonal Antibody



Western blot analysis of lysates from HUVEC, Jurkat, and COLO205 cells, using GPR107 Antibody. The lane on the right is blocked with the synthesized peptide.



Immunohistochemical analysis of paraffin-embedded human tonsil. 1, Antibody was diluted at 1:200(4° overnight). 2, Tris-EDTA,pH9.0 was used for antigen retrieval. 3,Secondary antibody was diluted at 1:200(room temperature, 45min).