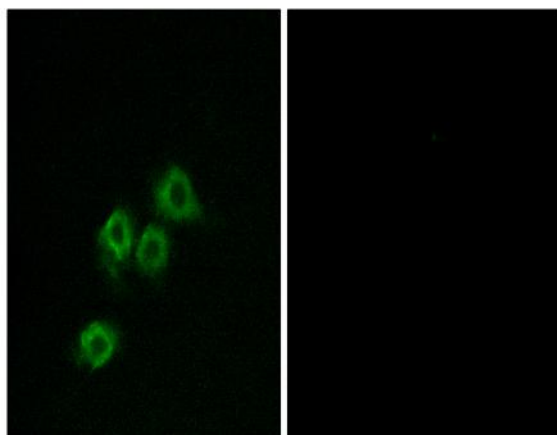


## GPR1 Polyclonal Antibody

<b>Catalog No :</b>	YT1945
<b>Reactivity :</b>	Human;Mouse;Rat
<b>Applications :</b>	IF;ELISA
<b>Target :</b>	GPR1
<b>Gene Name :</b>	GPR1
<b>Protein Name :</b>	G-protein coupled receptor 1
<b>Human Gene Id :</b>	2825
<b>Human Swiss Prot No :</b>	P46091
<b>Mouse Gene Id :</b>	241070
<b>Mouse Swiss Prot No :</b>	Q8K087
<b>Rat Gene Id :</b>	25457
<b>Rat Swiss Prot No :</b>	P46090
<b>Immunogen :</b>	The antiserum was produced against synthesized peptide derived from human GPR1. AA range:121-170
<b>Specificity :</b>	GPR1 Polyclonal Antibody detects endogenous levels of GPR1 protein.
<b>Formulation :</b>	Liquid in PBS containing 50% glycerol, 0.5% BSA and 0.02% sodium azide.
<b>Source :</b>	Polyclonal, Rabbit,IgG
<b>Dilution :</b>	IF 1:200 - 1:1000. ELISA: 1:5000. Not yet tested in other applications.
<b>Purification :</b>	The antibody was affinity-purified from rabbit antiserum by affinity-chromatography using epitope-specific immunogen.

<b>Concentration :</b>	1 mg/ml
<b>Storage Stability :</b>	-15°C to -25°C/1 year(Do not lower than -25°C)
<b>Molecularweight :</b>	41kD
<b>Background :</b>	function:Orphan receptor. Probable opioid receptor. Can act as a co-receptor for HIV-1.,similarity:Belongs to the G-protein coupled receptor 1 family.,tissue specificity:Expressed in hippocampus.,
<b>Function :</b>	function:Orphan receptor. Probable opioid receptor. Can act as a co-receptor for HIV-1.,similarity:Belongs to the G-protein coupled receptor 1 family.,tissue specificity:Expressed in hippocampus.,
<b>Subcellular Location :</b>	Cell membrane ; Multi-pass membrane protein . Internalizes in presence of its ligand, TFA1 (By similarity). Internalizes efficiently in response to RARRES2 (PubMed:27716822). .
<b>Expression :</b>	Expressed in hippocampus.

## Products Images



Immunofluorescence analysis of MCF7 cells, using GPR1 Antibody. The picture on the right is blocked with the synthesized peptide.