

## GNL3L Polyclonal Antibody

|                              |   |
|------------------------------|---|
| <b>Catalog No :</b>          | YT1938  |
| <b>Reactivity :</b>          | Human;Rat;Mouse;Cat   |
| <b>Applications :</b>        | WB;IHC;IF;ELISA   |
| <b>Target :</b>              | GNL3L   |
| <b>Fields :</b>              | >>Ribosome biogenesis in eukaryotes   |
| <b>Gene Name :</b>           | GNL3L   |
| <b>Protein Name :</b>        | Guanine nucleotide-binding protein-like 3-like protein  |
| <b>Human Gene Id :</b>       | 54552   |
| <b>Human Swiss Prot No :</b> | Q9NVN8  |
| <b>Mouse Swiss Prot No :</b> | Q6PGG6  |
| <b>Immunogen :</b>           | The antiserum was produced against synthesized peptide derived from human GNL3L. AA range:71-120                      |
| <b>Specificity :</b>         | GNL3L Polyclonal Antibody detects endogenous levels of GNL3L protein.   |
| <b>Formulation :</b>         | Liquid in PBS containing 50% glycerol, 0.5% BSA and 0.02% sodium azide.   |
| <b>Source :</b>              | Polyclonal, Rabbit,IgG  |
| <b>Dilution :</b>            | WB 1:500 - 1:2000. IHC 1:100 - 1:300. ELISA: 1:5000.. IF 1:50-200   |
| <b>Purification :</b>        | The antibody was affinity-purified from rabbit antiserum by affinity-chromatography using epitope-specific immunogen. |
| <b>Concentration :</b>       | 1 mg/ml   |
| <b>Storage Stability :</b>   | -15°C to -25°C/1 year(Do not lower than -25°C)  |

**Observed Band :** 66kD

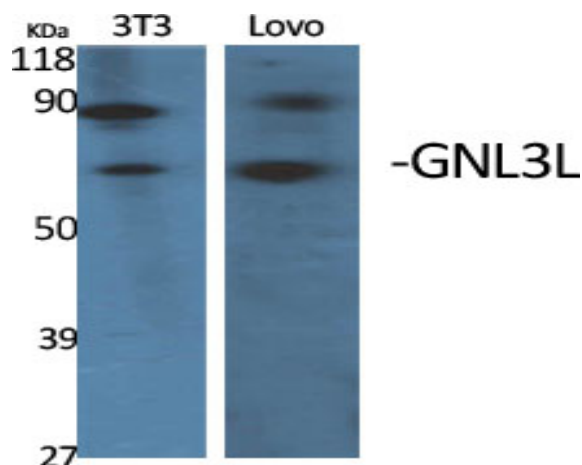
**Background :** The protein encoded by this gene appears to be a nucleolar GTPase that is essential for ribosomal pre-rRNA processing and cell proliferation. Two transcript variants encoding the same protein have been found for this gene. [provided by RefSeq, May 2010],

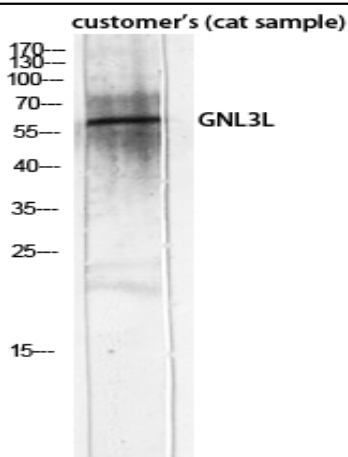
**Function :** domain:In contrast to other GTP-binding proteins, this family is characterized by a circular permutation of the GTPase motifs described by a G4-G1-G3 pattern.,function:Required for normal processing of ribosomal pre-rRNA. Required for cell proliferation. Binds GTP.,similarity:Belongs to the MMR1/HSR1 GTP-binding protein family.,

**Subcellular Location :** Nucleus, nucleolus .

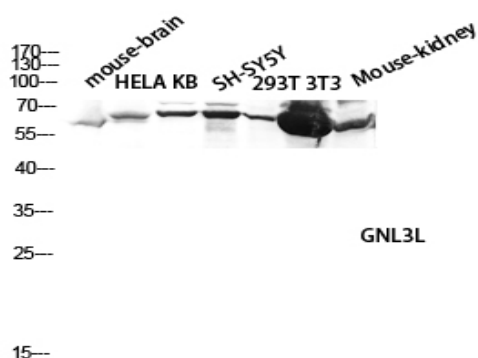
**Expression :** Lung,Skin,

## Products Images

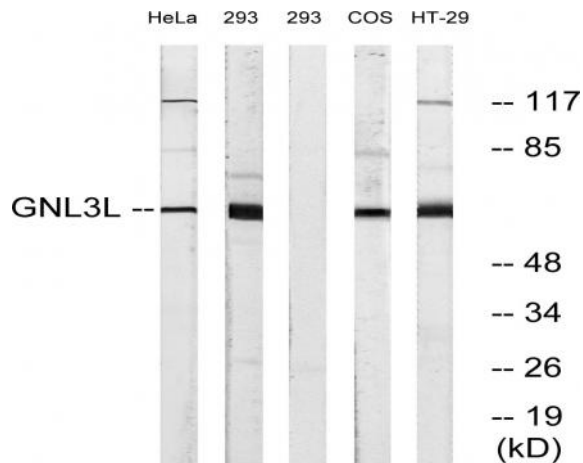




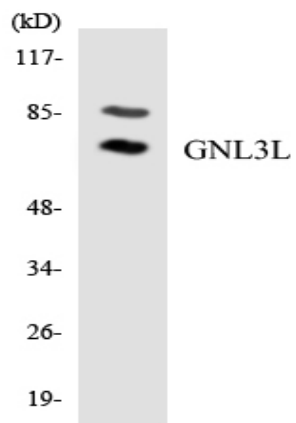
Western Blot analysis of customer's (cat sample) using GNL3L Polyclonal Antibody diluted at 1:2000 cells nucleus extracted by Minute TM Cytoplasmic and Nuclear Fractionation kit (SC-003, Inventbiotech, MN, USA).



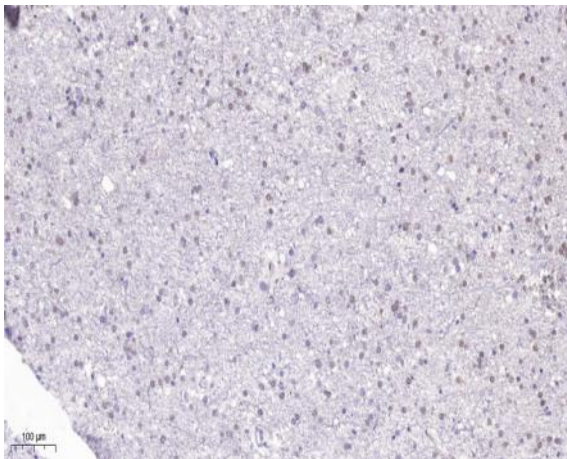
Western blot analysis of mouse-brain HELA KB SH-SY5Y 293T 3T3 Mouse-kidney lysis using GNL3L antibody. Antibody was diluted at 1:2000 cells nucleus extracted by Minute TM Cytoplasmic and Nuclear Fractionation kit (SC-003, Inventbiotech, MN, USA).



Western blot analysis of lysates from 293, HeLa, and HT-29 cells, using GNL3L Antibody. The lane on the right is blocked with the synthesized peptide.



Western blot analysis of the lysates from HUVEC cells using GNL3L antibody.



Immunohistochemical analysis of paraffin-embedded human brain. 1, Tris-EDTA, pH 9.0 was used for antigen retrieval. 2 Antibody was diluted at 1:200 (4° overnight). 3, Secondary antibody was diluted at 1:200 (room temperature, 45 min).