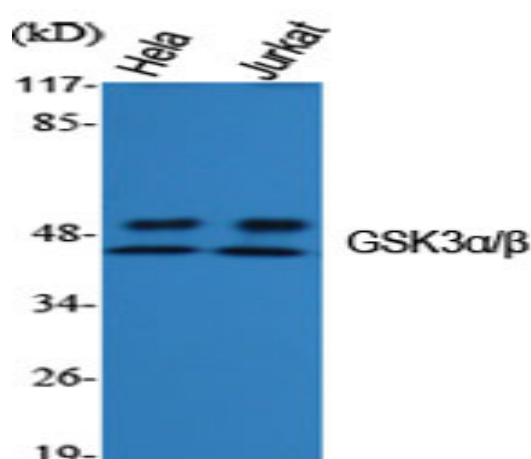


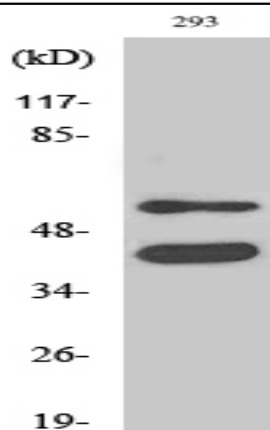
GSK3 α / β Polyclonal Antibody

Catalog No :	YT2081
Reactivity :	Human;Mouse;Rat;Drosophila;Drosophila
Applications :	WB;IHC;IF;ELISA
Target :	GSK3 α / β
Fields :	>>Chemokine signaling pathway;>>Dopaminergic synapse;>>Non-alcoholic fatty liver disease;>>Shigellosis
Gene Name :	GSK3A/GSK3B
Protein Name :	Glycogen synthase kinase-3 alpha/beta
Human Gene Id :	2931
Human Swiss Prot No :	P49840/P49841
Mouse Gene Id :	606496/56637
Rat Gene Id :	50686/84027
Rat Swiss Prot No :	P18265/P18266
Immunogen :	The antiserum was produced against synthesized peptide derived from human GSK3 alpha/beta. AA range:246-295
Specificity :	GSK3 α / β Polyclonal Antibody detects endogenous levels of GSK3 α / β protein.
Formulation :	Liquid in PBS containing 50% glycerol, 0.5% BSA and 0.02% sodium azide.
Source :	Polyclonal, Rabbit,IgG
Dilution :	WB 1:500 - 1:2000. IHC 1:100 - 1:300. ELISA: 1:20000.. IF 1:50-200
Purification :	The antibody was affinity-purified from rabbit antiserum by affinity-chromatography using epitope-specific immunogen.

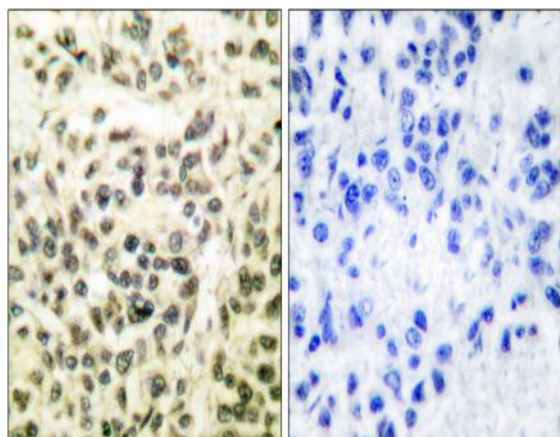
Concentration :	1 mg/ml
Storage Stability :	-15°C to -25°C/1 year(Do not lower than -25°C)
Observed Band :	51,46kD
Cell Pathway :	Chemokine;
Background :	glycogen synthase kinase 3 alpha(GSK3A) Homo sapiens This gene encodes a multifunctional Ser/Thr protein kinase that is implicated in the control of several regulatory proteins including glycogen synthase, and transcription factors, such as JUN. It also plays a role in the WNT and PI3K signaling pathways, as well as regulates the production of beta-amyloid peptides associated with Alzheimer's disease. [provided by RefSeq, Oct 2011],
Function :	catalytic activity:ATP + [tau protein] = ADP + [tau protein] phosphate.,function:Implicated in the hormonal control of several regulatory proteins including glycogen synthase, MYB and the transcription factor JUN.,similarity:Belongs to the protein kinase superfamily.,similarity:Belongs to the protein kinase superfamily. CMGC Ser/Thr protein kinase family. GSK-3 subfamily.,similarity:Contains 1 protein kinase domain.,subunit:Monomer.,
Subcellular Location :	mitochondrion,cytosol,beta-catenin destruction complex,postsynapse,
Expression :	Brain,Eye,Foreskin,Lung,Pancreas,Platelet,Testis,

Products Images

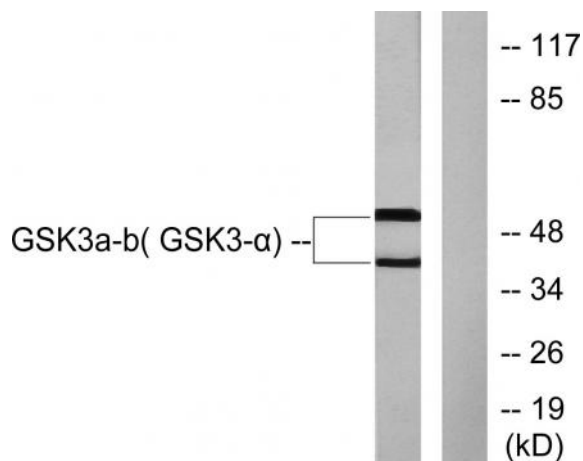




Western Blot analysis of 293 cells using GSK3α/β Polyclonal Antibody diluted at 1:1000



Immunohistochemistry analysis of paraffin-embedded human breast carcinoma tissue, using GSK3 alpha/beta Antibody. The picture on the right is blocked with the synthesized peptide.



Western blot analysis of lysates from 293 cells, treated with TNF-α 20ng/ml 30', using GSK3 alpha/beta Antibody. The lane on the right is blocked with the synthesized peptide.