

## GIMAP2 Polyclonal Antibody

<b>Catalog No :</b>	YT1903
<b>Reactivity :</b>	Human;Rat;Mouse;
<b>Applications :</b>	WB;IF;ELISA
<b>Target :</b>	GIMAP2
<b>Gene Name :</b>	GIMAP2
<b>Protein Name :</b>	GTPase IMAP family member 2
<b>Human Gene Id :</b>	26157
<b>Human Swiss Prot No :</b>	Q9UG22
<b>Immunogen :</b>	The antiserum was produced against synthesized peptide derived from human GIMAP2. AA range:201-250
<b>Specificity :</b>	GIMAP2 Polyclonal Antibody detects endogenous levels of GIMAP2 protein.
<b>Formulation :</b>	Liquid in PBS containing 50% glycerol, 0.5% BSA and 0.02% sodium azide.
<b>Source :</b>	Polyclonal, Rabbit,IgG
<b>Dilution :</b>	WB 1:500 - 1:2000. IF 1:200 - 1:1000. ELISA: 1:20000. Not yet tested in other applications.
<b>Purification :</b>	The antibody was affinity-purified from rabbit antiserum by affinity-chromatography using epitope-specific immunogen.
<b>Concentration :</b>	1 mg/ml
<b>Storage Stability :</b>	-15°C to -25°C/1 year(Do not lower than -25°C)
<b>Observed Band :</b>	38kD
<b>Background :</b>	This gene encodes a protein belonging to the GTP-binding superfamily and to

the immuno-associated nucleotide (IAN) subfamily of nucleotide-binding proteins. In humans, the IAN subfamily genes are located in a cluster at 7q36.1. [provided by RefSeq, Jul 2008],

**Function :**

similarity:Belongs to the IAN GTP-binding protein family.,

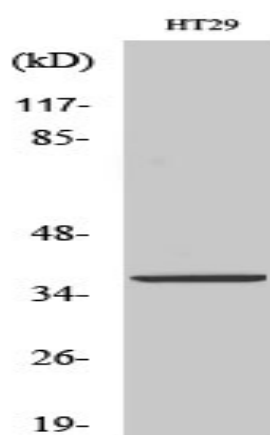
**Subcellular Location :**

Lipid droplet .

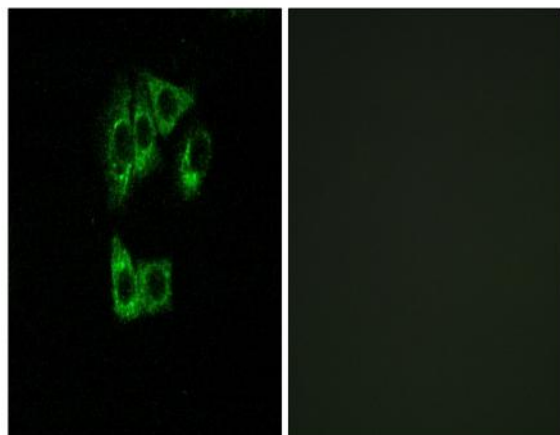
**Expression :**

Detected in T-cells.

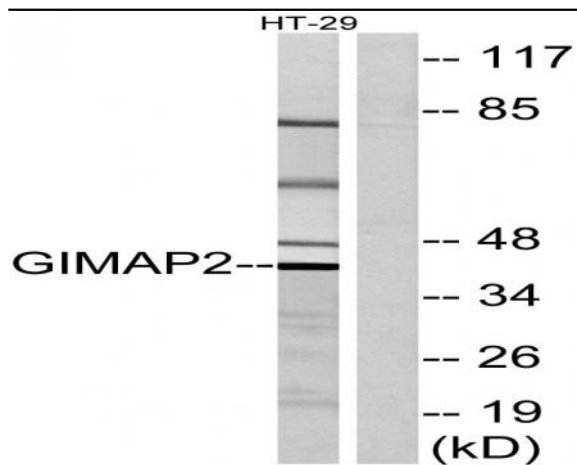
## Products Images



Western Blot analysis of various cells using GIMAP2 Polyclonal Antibody



Immunofluorescence analysis of A549 cells, using GIMAP2 Antibody. The picture on the right is blocked with the synthesized peptide.



Western blot analysis of lysates from HT-29 cells, using GIMAP2 Antibody. The lane on the right is blocked with the synthesized peptide.