

GGH Polyclonal Antibody

Catalog No :	YT1898
Reactivity :	Human;Rat;Mouse;
Applications :	WB;IHC;IF;ELISA
Target :	GGH
Fields :	>>Folate biosynthesis;>>Biosynthesis of cofactors;>>Antifolate resistance
Gene Name :	GGH
Protein Name :	Gamma-glutamyl hydrolase
Human Gene Id :	8836
Human Swiss Prot No :	Q92820
Mouse Swiss Prot No :	Q9Z0L8
Immunogen :	The antiserum was produced against synthesized peptide derived from human GGH. AA range:251-300
Specificity :	GGH Polyclonal Antibody detects endogenous levels of GGH protein.
Formulation :	Liquid in PBS containing 50% glycerol, 0.5% BSA and 0.02% sodium azide.
Source :	Polyclonal, Rabbit,IgG
Dilution :	WB 1:500 - 1:2000. IHC 1:100 - 1:300. ELISA: 1:10000.. IF 1:50-200
Purification :	The antibody was affinity-purified from rabbit antiserum by affinity-chromatography using epitope-specific immunogen.
Concentration :	1 mg/ml
Storage Stability :	-15°C to -25°C/1 year(Do not lower than -25°C)

Observed Band : 36kD

Cell Pathway : Folate biosynthesis;

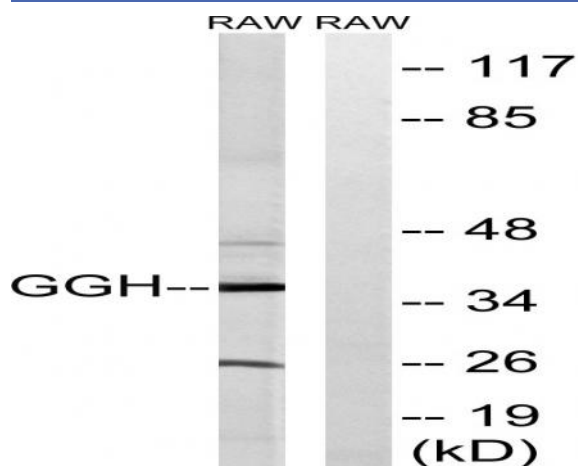
Background : This gene catalyzes the hydrolysis of folylpoly-gamma-glutamates and antifolylpoly-gamma-glutamates by the removal of gamma-linked polyglutamates and glutamate. [provided by RefSeq, Jul 2008],

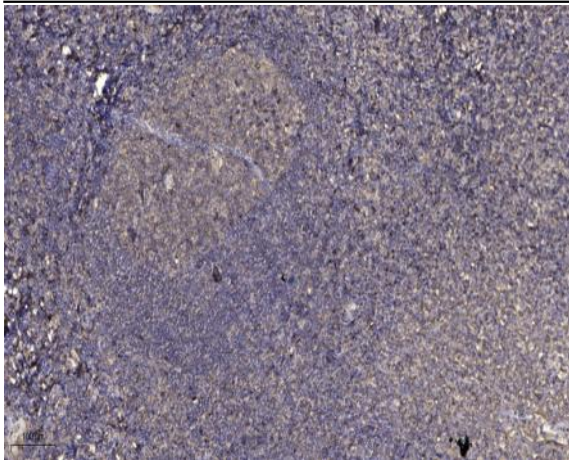
Function : catalytic activity:Hydrolysis of a gamma-glutamyl bond.,function:Hydrolyzes the polyglutamate sidechains of pteroylpolyglutamates. Progressively removes gamma-glutamyl residues from pteroylpoly-gamma-glutamate to yield pteroyl-alpha-glutamate (folic acid) and free glutamate. May play an important role in the bioavailability of dietary pteroylpolyglutamates and in the metabolism of pteroylpolyglutamates and antifolates.,similarity:Belongs to the peptidase C26 family.,similarity:Contains 1 gamma-glutamyl hydrolase domain.,subcellular location:While its intracellular location is primarily the lysosome, most of the enzyme activity is secreted. Identified by mass spectrometry in melanosome fractions from stage I to stage IV.,

Subcellular Location : Secreted, extracellular space . Lysosome . Melanosome . While its intracellular location is primarily the lysosome, most of the enzyme activity is secreted. Identified by mass spectrometry in melanosome fractions from stage I to stage IV.

Expression : Skin,

Products Images





Immunohistochemical analysis of paraffin-embedded human tonsil. 1, Antibody was diluted at 1:200(4 ° overnight). 2, Tris-EDTA,pH9.0 was used for antigen retrieval. 3,Secondary antibody was diluted at 1:200(room temperature, 30min).