

Ephrin-A5 Polyclonal Antibody

Catalog No :	YT1593
Reactivity :	Human;Mouse;Rat
Applications :	WB;IHC;IF;ELISA
Target :	Ephrin-A5
Fields :	>>MAPK signaling pathway;>>Ras signaling pathway;>>Rap1 signaling pathway;>>PI3K-Akt signaling pathway;>>Axon guidance;>>MicroRNAs in cancer
Gene Name :	EFNA5
Protein Name :	Ephrin-A5
Human Gene Id :	1946
Human Swiss Prot No :	P52803
Mouse Gene Id :	13640
Mouse Swiss Prot No :	O08543
Rat Gene Id :	116683
Rat Swiss Prot No :	P97605
Immunogen :	The antiserum was produced against synthesized peptide derived from human EFNA5. AA range:31-80
Specificity :	Ephrin-A5 Polyclonal Antibody detects endogenous levels of Ephrin-A5 protein.
Formulation :	Liquid in PBS containing 50% glycerol, 0.5% BSA and 0.02% sodium azide.
Source :	Polyclonal, Rabbit,IgG
Dilution :	WB 1:500 - 1:2000. IHC 1:100 - 1:300. IF 1:200 - 1:1000. ELISA: 1:40000. Not

yet tested in other applications.

Purification : The antibody was affinity-purified from rabbit antiserum by affinity-chromatography using epitope-specific immunogen.

Concentration : 1 mg/ml

Storage Stability : -15°C to -25°C/1 year(Do not lower than -25°C)

Observed Band : 25kD

Cell Pathway : Axon guidance;

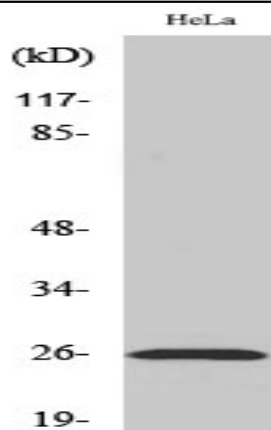
Background : Ephrin-A5, a member of the ephrin gene family, prevents axon bundling in cocultures of cortical neurons with astrocytes, a model of late stage nervous system development and differentiation. The EPH and EPH-related receptors comprise the largest subfamily of receptor protein-tyrosine kinases and have been implicated in mediating developmental events, particularly in the nervous system. EPH receptors typically have a single kinase domain and an extracellular region containing a Cys-rich domain and 2 fibronectin type III repeats. The ephrin ligands and receptors have been named by the Eph Nomenclature Committee (1997). Based on their structures and sequence relationships, ephrins are divided into the ephrin-A (EFNA) class, which are anchored to the membrane by a glycosylphosphatidylinositol linkage, and the ephrin-B (EFNB) class, which are transmembrane proteins. The Eph family of receptors are similarly divi

Function : function:May function actively to stimulate axon fasciculation. Induces compartmentalized signaling within a caveolae-like membrane microdomain when bound to the extracellular domain of its cognate receptor. This signaling event requires the activity of the Fyn tyrosine kinase.,similarity:Belongs to the ephrin family.,subcellular location:Compartmentalized in discrete caveolae-like membrane microdomains.,subunit:Binds to EPHB2 (By similarity). Binds to the receptor tyrosine kinases EPHA2, EPHA3 and EPHB1.,

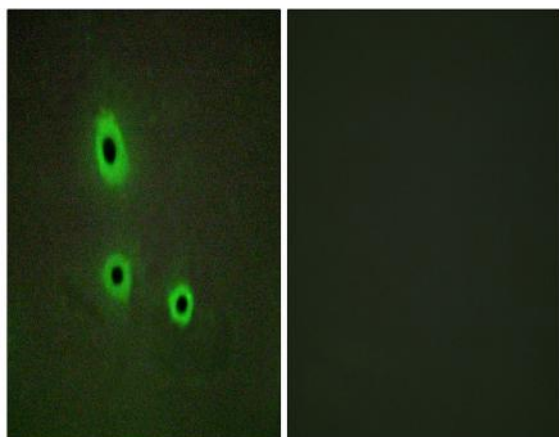
Subcellular Location : Cell membrane ; Lipid-anchor, GPI-anchor . Membrane, caveola ; Lipid-anchor, GPI-anchor . Compartmentalized in discrete caveolae-like membrane microdomains.

Expression : Brain,

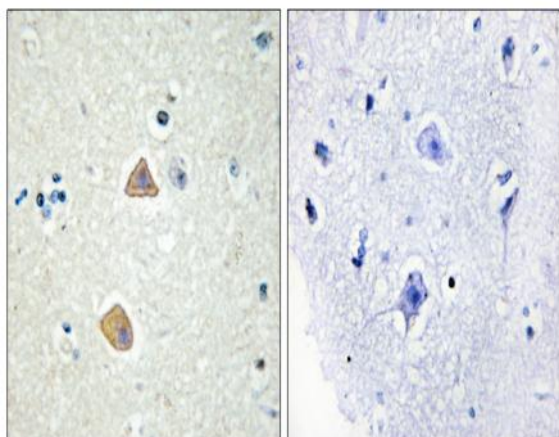
Products Images



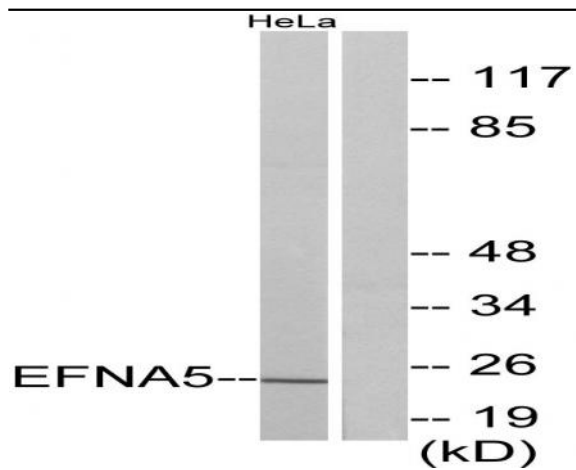
Western Blot analysis of various cells using Ephrin-A5 Polyclonal Antibody



Immunofluorescence analysis of A549 cells, using EFNA5 Antibody. The picture on the right is blocked with the synthesized peptide.



Immunohistochemistry analysis of paraffin-embedded human brain tissue, using EFNA5 Antibody. The picture on the right is blocked with the synthesized peptide.



Western blot analysis of lysates from HeLa cells, using EFNA5 Antibody. The lane on the right is blocked with the synthesized peptide.