

GCP5 Polyclonal Antibody

Catalog No :	YT1881
Reactivity :	Human;Mouse;Rat
Applications :	WB;IHC;IF;ELISA
Target :	GCP5
Gene Name :	TUBGCP5
Protein Name :	Gamma-tubulin complex component 5
Human Gene Id :	114791
Human Swiss Prot No :	Q96RT8
Mouse Gene Id :	233276
Mouse Swiss Prot No :	Q8BKN5
Immunogen :	The antiserum was produced against synthesized peptide derived from human TUBGCP5. AA range:741-790
Specificity :	GCP5 Polyclonal Antibody detects endogenous levels of GCP5 protein.
Formulation :	Liquid in PBS containing 50% glycerol, 0.5% BSA and 0.02% sodium azide.
Source :	Polyclonal, Rabbit,IgG
Dilution :	WB 1:500 - 1:2000. IHC 1:100 - 1:300. ELISA: 1:20000.. IF 1:50-200
Purification :	The antibody was affinity-purified from rabbit antiserum by affinity-chromatography using epitope-specific immunogen.
Concentration :	1 mg/ml
Storage Stability :	-15°C to -25°C/1 year(Do not lower than -25°C)

Observed Band : 118kD

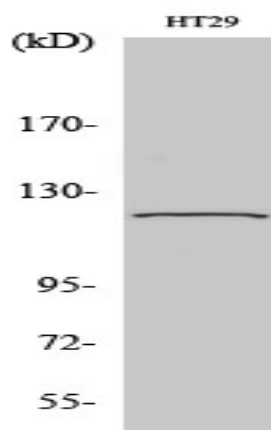
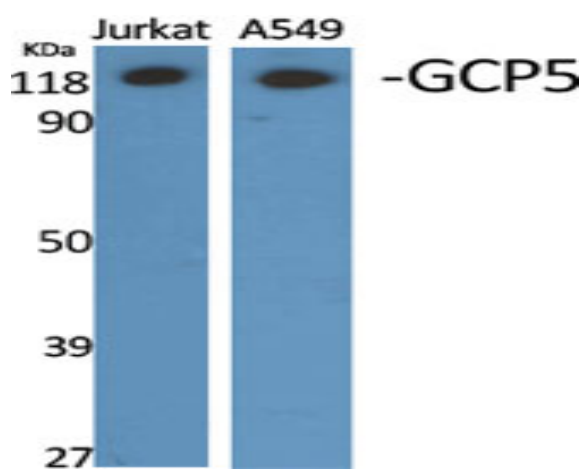
Background : function:Gamma-tubulin complex is necessary for microtubule nucleation at the centrosome.,similarity:Belongs to the GCP family.,subunit:Gamma-tubulin complex is composed of gamma-tubulin, GCP2, GCP3, GCP4, GCP5 and GCP6.,tissue specificity:Widely expressed, with highest levels in heart and skeletal muscle and moderate levels in brain.,

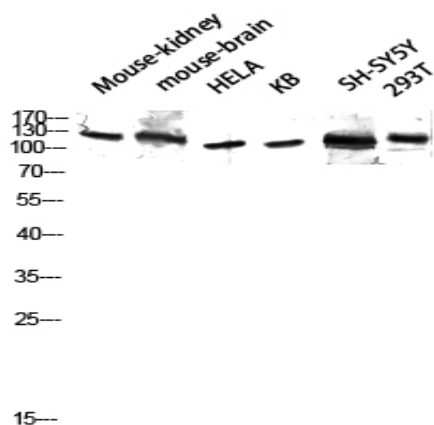
Function : function:Gamma-tubulin complex is necessary for microtubule nucleation at the centrosome.,similarity:Belongs to the GCP family.,subunit:Gamma-tubulin complex is composed of gamma-tubulin, GCP2, GCP3, GCP4, GCP5 and GCP6.,tissue specificity:Widely expressed, with highest levels in heart and skeletal muscle and moderate levels in brain.,

Subcellular Location : Cytoplasm, cytoskeleton, microtubule organizing center, centrosome .

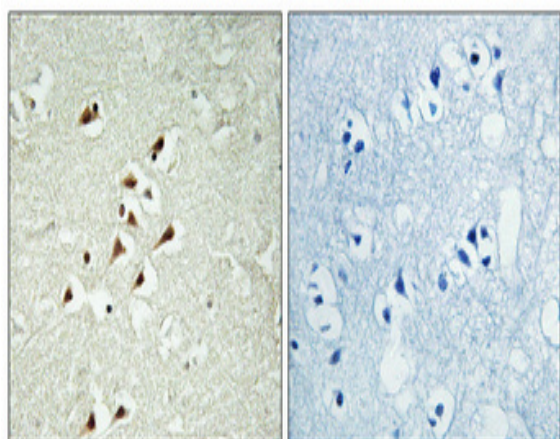
Expression : Widely expressed, with highest levels in heart and skeletal muscle and moderate levels in brain.

Products Images

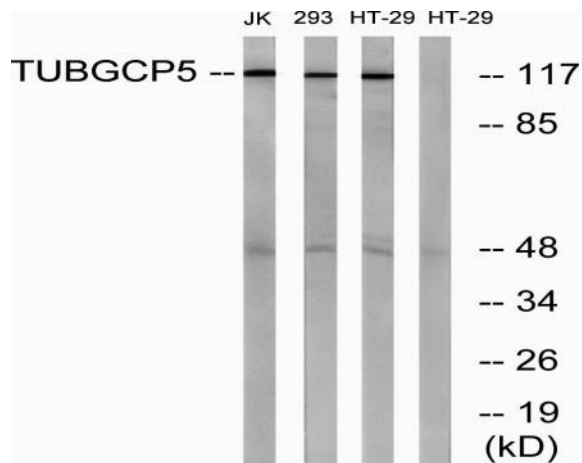




Western blot analysis of Mouse-kidney mouse-brain HELA KB SH-SY5Y 293T lysates using GCP5 antibody. Antibody was diluted at 1:2000



Immunohistochemical analysis of paraffin-embedded Human brain. Antibody was diluted at 1:100(4° overnight). High-pressure and temperature Tris-EDTA,pH8.0 was used for antigen retrieval. Negative control (right) obtained from antibody was pre-absorbed by immunogen peptide.



Western blot analysis of lysates from HT-29, Jurkat, and 293 cells, using TUBGCP5 Antibody. The lane on the right is blocked with the synthesized peptide.