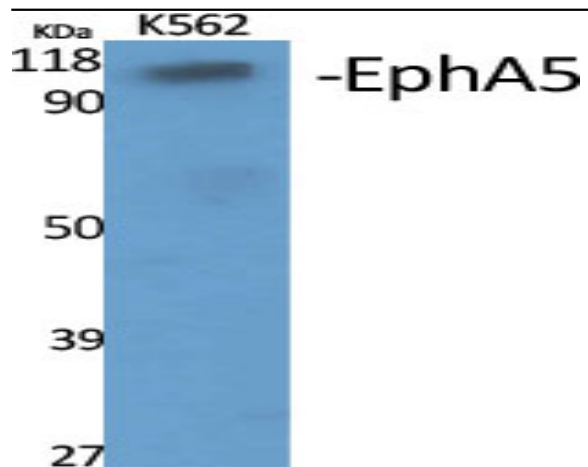


EphA5 Polyclonal Antibody

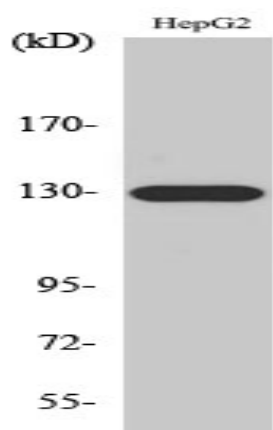
Catalog No :	YT1579
Reactivity :	Human;Mouse;Rat
Applications :	WB;ELISA
Target :	EphA5
Fields :	>>Axon guidance
Gene Name :	EPHA5
Protein Name :	Ephrin type-A receptor 5
Human Gene Id :	2044
Human Swiss Prot No :	P54756
Mouse Gene Id :	13839
Mouse Swiss Prot No :	Q60629
Rat Gene Id :	79208
Rat Swiss Prot No :	P54757
Immunogen :	The antiserum was produced against synthesized peptide derived from human EPHA5. AA range:471-520
Specificity :	EphA5 Polyclonal Antibody detects endogenous levels of EphA5 protein.
Formulation :	Liquid in PBS containing 50% glycerol, 0.5% BSA and 0.02% sodium azide.
Source :	Polyclonal, Rabbit,IgG
Dilution :	WB 1:500 - 1:2000. ELISA: 1:20000. Not yet tested in other applications.

Purification :	The antibody was affinity-purified from rabbit antiserum by affinity-chromatography using epitope-specific immunogen.
Concentration :	1 mg/ml
Storage Stability :	-15°C to -25°C/1 year(Do not lower than -25°C)
Observed Band :	110kD
Cell Pathway :	Axon guidance;
Background :	This gene belongs to the ephrin receptor subfamily of the protein-tyrosine kinase family. EPH and EPH-related receptors have been implicated in mediating developmental events, particularly in the nervous system. Receptors in the EPH subfamily typically have a single kinase domain and an extracellular region containing a Cys-rich domain and 2 fibronectin type III repeats. The ephrin receptors are divided into 2 groups based on the similarity of their extracellular domain sequences and their affinities for binding ephrin-A and ephrin-B ligands. Alternatively spliced transcript variants encoding different isoforms have been described. [provided by RefSeq, Aug 2013],
Function :	alternative products:Additional isoforms seem to exist,catalytic activity:ATP + a [protein]-L-tyrosine = ADP + a [protein]-L-tyrosine phosphate.,function:Receptor for members of the ephrin-A family. Binds to ephrin-A1, -A2, -A3, -A4 and -A5.,similarity:Belongs to the protein kinase superfamily. Tyr protein kinase family.,similarity:Belongs to the protein kinase superfamily. Tyr protein kinase family. Ephrin receptor subfamily.,similarity:Contains 1 protein kinase domain.,similarity:Contains 1 SAM (sterile alpha motif) domain.,similarity:Contains 2 fibronectin type-III domains.,tissue specificity:Almost exclusively expressed in the nervous system.,
Subcellular Location :	Cell membrane ; Single-pass type I membrane protein . Cell projection, axon . Cell projection, dendrite .
Expression :	Almost exclusively expressed in the nervous system in cortical neurons, cerebellar Purkinje cells and pyramidal neurons within the cortex and hippocampus. Display an increasing gradient of expression from the forebrain to hindbrain and spinal cord.

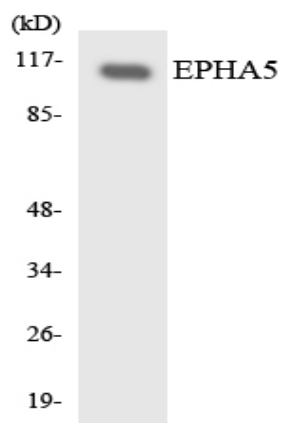
Products Images



Western Blot analysis of various cells using EphA5 Polyclonal Antibody



Western Blot analysis of A549 cells using EphA5 Polyclonal Antibody



Western blot analysis of the lysates from HeLa cells using EPHA5 antibody.