

GASP-1 Polyclonal Antibody

Catalog No :	YT1856
Reactivity :	Human;Rat;Mouse;
Applications :	IHC;IF;ELISA
Target :	GASP-1
Gene Name :	GPRASP1
Protein Name :	G-protein coupled receptor-associated sorting protein 1
Human Gene Id :	9737
Human Swiss Prot No :	Q5JY77
Mouse Swiss Prot No :	Q5U4C1
Immunogen :	The antiserum was produced against synthesized peptide derived from human GASP1. AA range:741-790
Specificity :	GASP-1 Polyclonal Antibody detects endogenous levels of GASP-1 protein.
Formulation :	Liquid in PBS containing 50% glycerol, 0.5% BSA and 0.02% sodium azide.
Source :	Polyclonal, Rabbit,IgG
Dilution :	IHC 1:100 - 1:300. IF 1:200 - 1:1000. ELISA: 1:10000. Not yet tested in other applications.
Purification :	The antibody was affinity-purified from rabbit antiserum by affinity-chromatography using epitope-specific immunogen.
Concentration :	1 mg/ml
Storage Stability :	-15°C to -25°C/1 year(Do not lower than -25°C)
Molecularweight :	157kD

Background :

This gene encodes a member of the GPRASP (G protein-coupled receptor associated sorting protein) family. The protein may modulate lysosomal sorting and functional down-regulation of a variety of G-protein coupled receptors. It targets receptors for degradation in lysosomes. The receptors interacting with this sorting protein include D2 dopamine receptor (DRD2), delta opioid receptor (OPRD1), beta-2 adrenergic receptor (ADRB2), D4 dopamine receptor (DRD4) and cannabinoid 1 receptor (CB1R). Multiple alternatively spliced transcript variants encoding the same protein have been identified. [provided by RefSeq, May 2010],

Function :

function:May modulate lysosomal sorting and functional down-regulation of a variety of G-protein coupled receptors. Targets receptors for degradation in lysosomes.,similarity:Belongs to the GPRASP family.,subunit:Interacts with cytoplasmic tails of a variety of G-protein coupled receptors such as D2 dopamine receptor/DRD2 (By similarity), delta opioid receptor/OPRD1, beta-2 adrenergic receptor/ADRB2 and D4 dopamine receptor/DRD4. Interacts with PER1.,tissue specificity:Expressed in the brain, with lower expression in medulla, spinal cord and substantia nigra.,

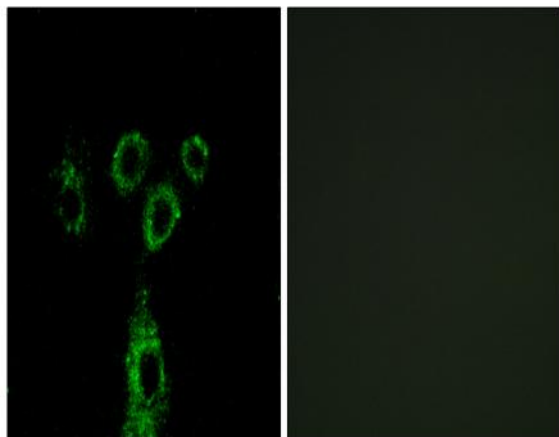
Subcellular Location :

Cytoplasm .

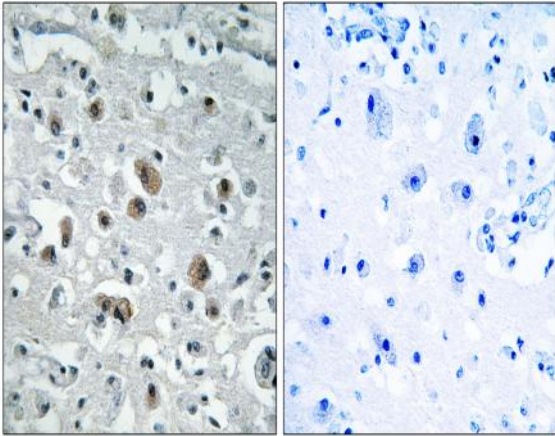
Expression :

Expressed in the brain, with lower expression in medulla, spinal cord and substantia nigra.

Products Images



Immunofluorescence analysis of A549 cells, using GASP1 Antibody. The picture on the right is blocked with the synthesized peptide.



Immunohistochemistry analysis of paraffin-embedded human brain tissue, using GASP1 Antibody. The picture on the right is blocked with the synthesized peptide.