

Gas1 Polyclonal Antibody

Catalog No :	YT1850
Reactivity :	Human;Mouse
Applications :	WB;ELISA
Target :	Gas1
Fields :	>>Hedgehog signaling pathway
Gene Name :	GAS1
Protein Name :	Growth arrest-specific protein 1
Human Gene Id :	2619
Human Swiss Prot No :	P54826
Mouse Gene Id :	14451
Mouse Swiss Prot No :	Q01721
Immunogen :	The antiserum was produced against synthesized peptide derived from human GAS1. AA range:241-290
Specificity :	Gas1 Polyclonal Antibody detects endogenous levels of Gas1 protein.
Formulation :	Liquid in PBS containing 50% glycerol, 0.5% BSA and 0.02% sodium azide.
Source :	Polyclonal, Rabbit,IgG
Dilution :	WB 1:500 - 1:2000. ELISA: 1:40000. Not yet tested in other applications.
Purification :	The antibody was affinity-purified from rabbit antiserum by affinity-chromatography using epitope-specific immunogen.
Concentration :	1 mg/ml

Storage Stability : -15°C to -25°C/1 year(Do not lower than -25°C)

Observed Band : 36kD

Cell Pathway : Hedgehog;

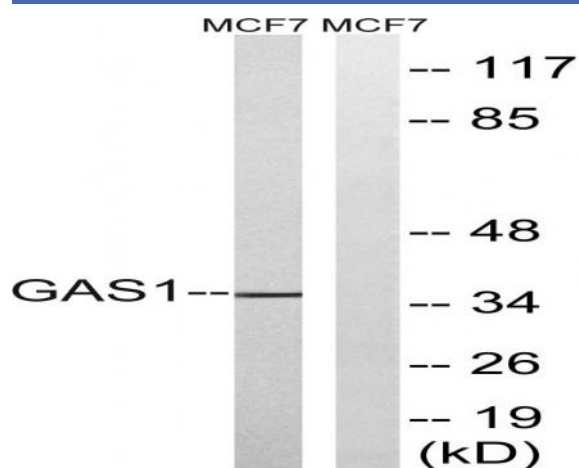
Background : Growth arrest-specific 1 plays a role in growth suppression. GAS1 blocks entry to S phase and prevents cycling of normal and transformed cells. Gas1 is a putative tumor suppressor gene. [provided by RefSeq, Jul 2008],

Function : function:Specific growth arrest protein involved in growth suppression. Blocks entry to S phase. Prevents cycling of normal and transformed cells.,

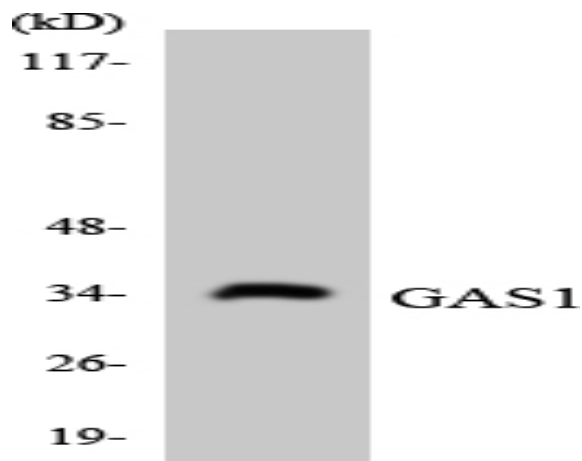
Subcellular Location : Cell membrane ; Lipid-anchor, GPI-anchor .

Expression : Liver,

Products Images



Western blot analysis of lysates from MCF-7 cells, using GAS1 Antibody. The lane on the right is blocked with the synthesized peptide.



Western blot analysis of the lysates from HeLa cells using GAS1 antibody.