

ENX-2 Polyclonal Antibody

Catalog No :	YT1563
Reactivity :	Human;Mouse;Monkey
Applications :	WB;IHC;IF;ELISA
Target :	ENX-2
Fields :	>>Lysine degradation;>>Metabolic pathways
Gene Name :	EZH1
Protein Name :	Histone-lysine N-methyltransferase EZH1
Human Gene Id :	2145
Human Swiss Prot No :	Q92800
Mouse Gene Id :	14055
Mouse Swiss Prot No :	P70351
Immunogen :	The antiserum was produced against synthesized peptide derived from human EZH1. AA range:171-220
Specificity :	ENX-2 Polyclonal Antibody detects endogenous levels of ENX-2 protein.
Formulation :	Liquid in PBS containing 50% glycerol, 0.5% BSA and 0.02% sodium azide.
Source :	Polyclonal, Rabbit,IgG
Dilution :	WB 1:500 - 1:2000. IHC 1:100 - 1:300. IF 1:200 - 1:1000. ELISA: 1:40000. Not yet tested in other applications.
Purification :	The antibody was affinity-purified from rabbit antiserum by affinity-chromatography using epitope-specific immunogen.
Concentration :	1 mg/ml

Storage Stability : -15°C to -25°C/1 year(Do not lower than -25°C)

Observed Band : 85kD

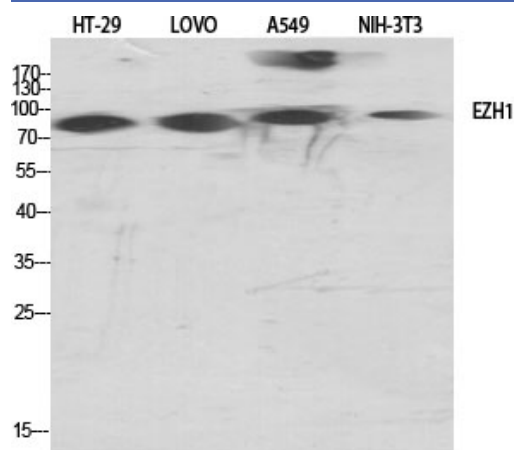
Background : enhancer of zeste 1 polycomb repressive complex 2 subunit(EZH1) Homo sapiens EZH1 is a component of a noncanonical Polycomb repressive complex-2 (PRC2) that mediates methylation of histone H3 (see MIM 602812) lys27 (H3K27) and functions in the maintenance of embryonic stem cell pluripotency and plasticity (Shen et al., 2008 [PubMed 19026780]).[supplied by OMIM, Mar 2009],

Function : catalytic activity:S-adenosyl-L-methionine + histone L-lysine = S-adenosyl-L-homocysteine + histone N(6)-methyl-L-lysine.,function:Polycomb group (PcG) protein. Catalytic subunit of the PRC2/EED-EZH1 complex, which methylates 'Lys-27' of histone H3, leading to transcriptional repression of the affected target gene. Able to mono-, di- and trimethylate 'Lys-27' of histone H3 to form H3K27me1, H3K27me2 and H3K27me3, respectively. Required for embryonic stem cell derivation and self-renewal, suggesting that it is involved in safeguarding embryonic stem cell identity. Compared to EZH1-containing complexes, it is less abundant in embryonic stem cells and plays a less critical role in forming H3K27me3, which is required for embryonic stem cell identity and proper differentiation.,similarity:Belongs to the histone-lysine methyltransferase family. EZ subfamily.,similarity:Contains 1 SET domain.,s

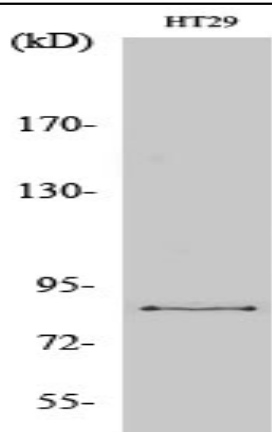
Subcellular Location : Nucleus . Colocalizes with trimethylated 'Lys-27' of histone H3.

Expression : Brain,Hippocampus,Uterus,

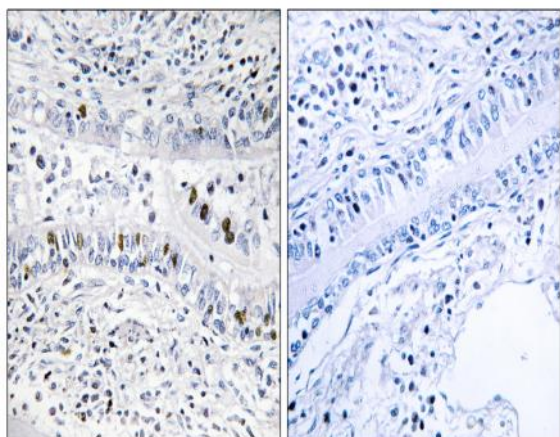
Products Images



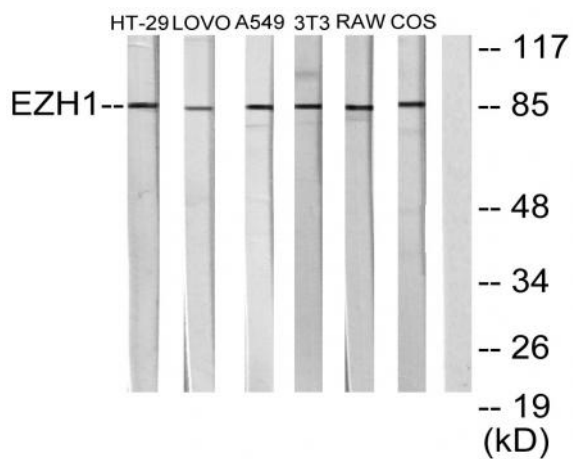
Western Blot analysis of various cells using ENX-2 Polyclonal Antibody cells nucleus extracted by Minute TM Cytoplasmic and Nuclear Fractionation kit (SC-003, Inventbiotech, MN, USA).



Western Blot analysis of COS7 cells using ENX-2 Polyclonal Antibody cells nucleus extracted by Minute TM Cytoplasmic and Nuclear Fractionation kit (SC-003, Inventbiotech, MN, USA).



Immunohistochemistry analysis of paraffin-embedded human lung carcinoma tissue, using EZH1 Antibody. The picture on the right is blocked with the synthesized peptide.



Western blot analysis of lysates from HT-29, LOVO, A549, NIH/3T3, RAW264.7, and COS7 cells, using EZH1 Antibody. The lane on the right is blocked with the synthesized peptide.