

## Enolase Polyclonal Antibody

<b>Catalog No :</b>	YT1561
<b>Reactivity :</b>	Human;Mouse;Rat
<b>Applications :</b>	WB;IHC;IF;ELISA
<b>Target :</b>	Enolase
<b>Fields :</b>	>>Glycolysis / Gluconeogenesis;>>Metabolic pathways;>>Carbon metabolism;>>Biosynthesis of amino acids;>>RNA degradation;>>HIF-1 signaling pathway
<b>Gene Name :</b>	ENO2
<b>Protein Name :</b>	Gamma-enolase
<b>Human Gene Id :</b>	2026
<b>Human Swiss Prot No :</b>	P09104
<b>Mouse Gene Id :</b>	13807
<b>Mouse Swiss Prot No :</b>	P17183
<b>Rat Gene Id :</b>	1.00912e+008
<b>Rat Swiss Prot No :</b>	P07323
<b>Immunogen :</b>	The antiserum was produced against synthesized peptide derived from human NSE. AA range:371-420
<b>Specificity :</b>	Enolase Polyclonal Antibody detects endogenous levels of Enolase protein.
<b>Formulation :</b>	Liquid in PBS containing 50% glycerol, 0.5% BSA and 0.02% sodium azide.
<b>Source :</b>	Polyclonal, Rabbit,IgG
<b>Dilution :</b>	WB 1:500 - 1:2000. IHC 1:100 - 1:300. IF 1:200 - 1:1000. ELISA: 1:10000. Not

yet tested in other applications.

---

**Purification :** The antibody was affinity-purified from rabbit antiserum by affinity-chromatography using epitope-specific immunogen.

---

**Concentration :** 1 mg/ml

---

**Storage Stability :** -15°C to -25°C/1 year(Do not lower than -25°C)

---

**Observed Band :** 47kD

---

**Cell Pathway :** Glycolysis / Gluconeogenesis;RNA degradation;

---

**Background :** enolase 2(ENO2) Homo sapiens This gene encodes one of the three enolase isoenzymes found in mammals. This isoenzyme, a homodimer, is found in mature neurons and cells of neuronal origin. A switch from alpha enolase to gamma enolase occurs in neural tissue during development in rats and primates. [provided by RefSeq, Jul 2008],

---

**Function :** catalytic activity:2-phospho-D-glycerate = phosphoenolpyruvate + H(2)O.,cofactor:Magnesium. Required for catalysis and for stabilizing the dimer.,developmental stage:During ontogenesis, there is a transition from the alpha/alpha homodimer to the alpha/beta heterodimer in striated muscle cells, and to the alpha/gamma heterodimer in nerve cells.,function:Has neurotrophic and neuroprotective properties on a broad spectrum of central nervous system (CNS) neurons. Binds, in a calcium-dependent manner, to cultured neocortical neurons and promotes cell survival.,induction:Levels of ENO2 increase dramatically in cardiovascular accidents, cerebral trauma, brain tumors and Creutzfeldt-Jacob disease.,pathway:Carbohydrate degradation; glycolysis; pyruvate from D-glyceraldehyde 3-phosphate: step 4/5.,similarity:Belongs to the enolase family.,subcellular location:Can translocate to the plasma membrane

---

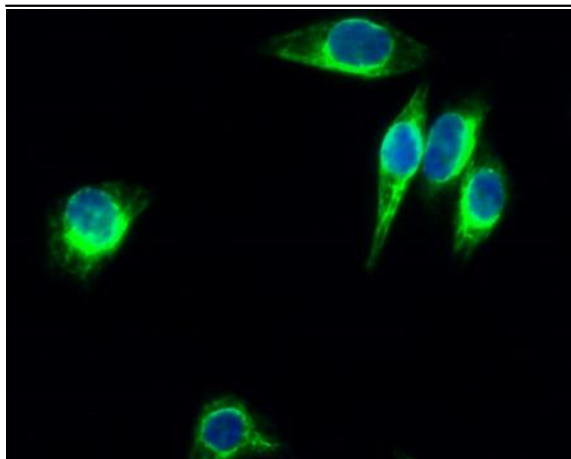
**Subcellular Location :** Cytoplasm . Cell membrane . Can translocate to the plasma membrane in either the homodimeric (alpha/alpha) or heterodimeric (alpha/gamma) form. .

---

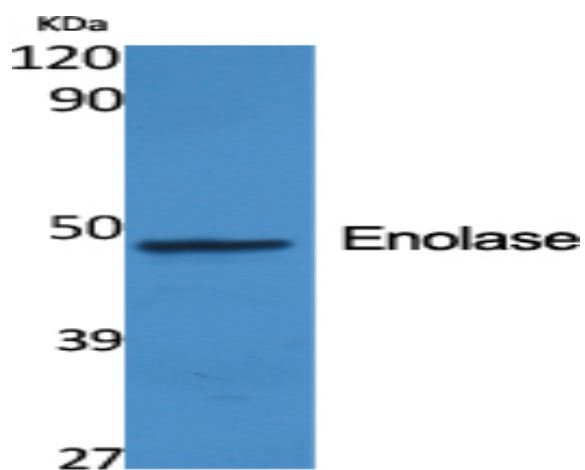
**Expression :** The alpha/alpha homodimer is expressed in embryo and in most adult tissues. The alpha/beta heterodimer and the beta/beta homodimer are found in striated muscle, and the alpha/gamma heterodimer and the gamma/gamma homodimer in neurons.

---

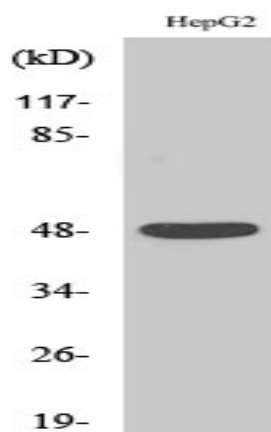
## Products Images



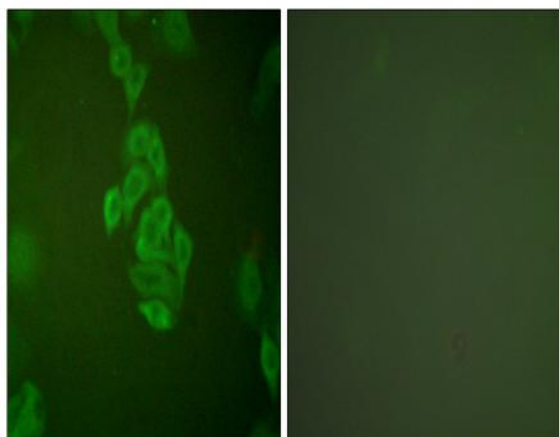
Immunofluorescence analysis of HeLa cell. 1, Enolase Polyclonal Antibody (green) was diluted at 1:200 (4 ° overnight). 2, Goat Anti Rabbit Alexa Fluor 488 Catalog:RS3211 was diluted at 1:1000 (room temperature, 50min). 3 DAPI (blue) 10min.



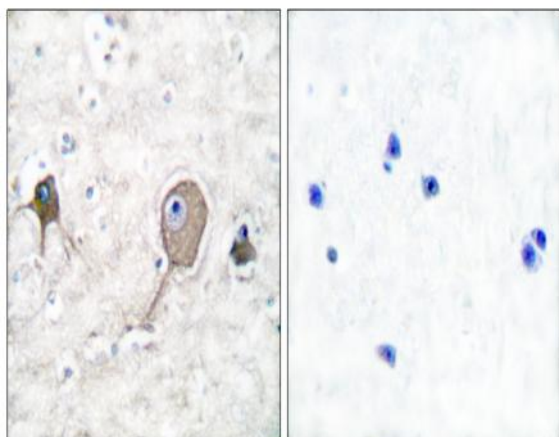
Western Blot analysis of various cells using Enolase Polyclonal Antibody diluted at 1:2000



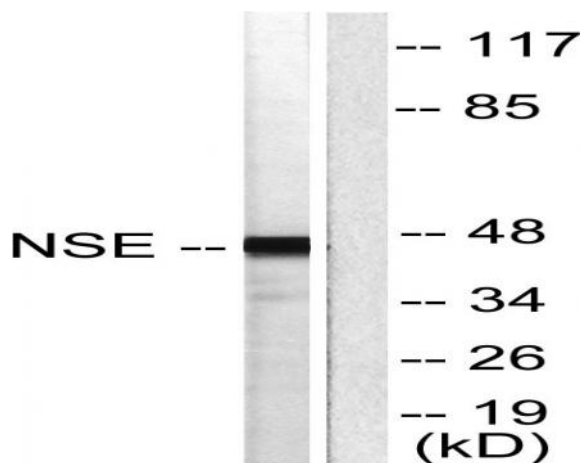
Western Blot analysis of HepG2 cells using Enolase Polyclonal Antibody diluted at 1:2000



Immunofluorescence analysis of A549 cells, using NSE Antibody. The picture on the right is blocked with the synthesized peptide.



Immunohistochemistry analysis of paraffin-embedded human brain tissue, using NSE Antibody. The picture on the right is blocked with the synthesized peptide.



Western blot analysis of lysates from HepG2 cells, using NSE Antibody. The lane on the right is blocked with the synthesized peptide.