

GALR3 Polyclonal Antibody

Catalog No :	YT1846
Reactivity :	Human;Rat;Mouse;
Applications :	WB;IF;ELISA
Target :	GALR3
Fields :	>>Neuroactive ligand-receptor interaction
Gene Name :	GALR3
Protein Name :	Galanin receptor type 3
Human Gene Id :	8484
Human Swiss Prot No :	O60755
Mouse Swiss Prot No :	O88853
Immunogen :	The antiserum was produced against synthesized peptide derived from human GALR3. AA range:291-340
Specificity :	GALR3 Polyclonal Antibody detects endogenous levels of GALR3 protein.
Formulation :	Liquid in PBS containing 50% glycerol, 0.5% BSA and 0.02% sodium azide.
Source :	Polyclonal, Rabbit,IgG
Dilution :	WB 1:500 - 1:2000. IF 1:200 - 1:1000. ELISA: 1:40000. Not yet tested in other applications.
Purification :	The antibody was affinity-purified from rabbit antiserum by affinity-chromatography using epitope-specific immunogen.
Concentration :	1 mg/ml
Storage Stability :	-15°C to -25°C/1 year(Do not lower than -25°C)

Observed Band : 40kD

Cell Pathway : Neuroactive ligand-receptor interaction;

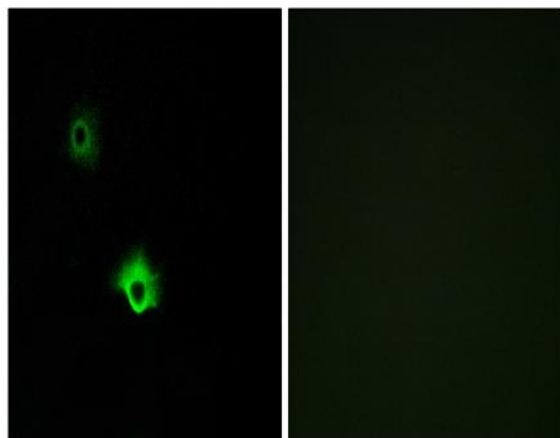
Background : The neuropeptide galanin modulates a variety of physiologic processes including cognition/memory, sensory/pain processing, hormone secretion, and feeding behavior. The human galanin receptors are G protein-coupled receptors that functionally couple to their intracellular effector through distinct signaling pathways. GALR3 is found in many tissues and may be expressed as 1.4-, 2.4-, and 5-kb transcripts [provided by RefSeq, Jul 2008],

Function : function:Receptor for the hormone galanin.,similarity:Belongs to the G-protein coupled receptor 1 family.,

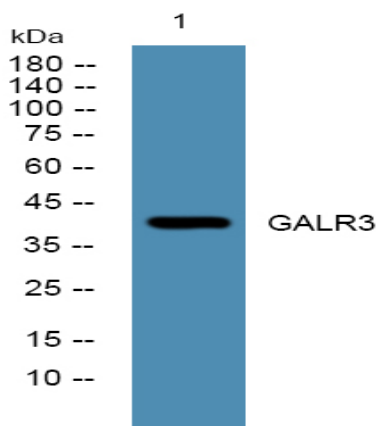
Subcellular Location : Cell membrane; Multi-pass membrane protein.

Expression : Uterus,

Products Images



Immunofluorescence analysis of A549 cells, using GALR3 Antibody. The picture on the right is blocked with the synthesized peptide.



Western blot analysis of lysates from KB cells, primary antibody was diluted at 1:1000, 4° over night