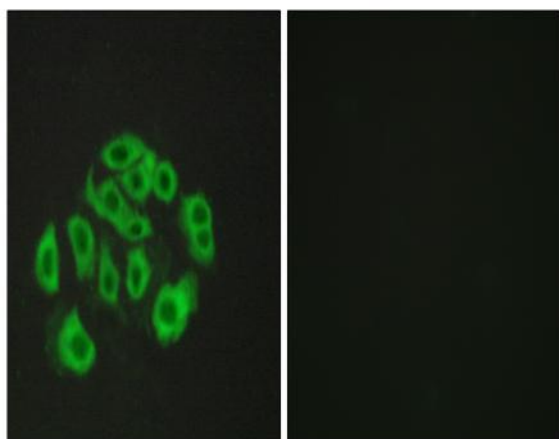


## Endomucin Polyclonal Antibody

<b>Catalog No :</b>	YT1557
<b>Reactivity :</b>	Human;Mouse;Rat
<b>Applications :</b>	IF;ELISA
<b>Target :</b>	Endomucin
<b>Gene Name :</b>	EMCN
<b>Protein Name :</b>	Endomucin
<b>Human Gene Id :</b>	51705
<b>Human Swiss Prot No :</b>	Q9ULC0
<b>Mouse Gene Id :</b>	59308
<b>Mouse Swiss Prot No :</b>	Q9R0H2
<b>Rat Gene Id :</b>	295490
<b>Rat Swiss Prot No :</b>	Q6AY82
<b>Immunogen :</b>	The antiserum was produced against synthesized peptide derived from human Mucin-14. AA range:201-250
<b>Specificity :</b>	Endomucin Polyclonal Antibody detects endogenous levels of Endomucin protein.
<b>Formulation :</b>	Liquid in PBS containing 50% glycerol, 0.5% BSA and 0.02% sodium azide.
<b>Source :</b>	Polyclonal, Rabbit,IgG
<b>Dilution :</b>	IF 1:200 - 1:1000. ELISA: 1:5000. Not yet tested in other applications.
<b>Purification :</b>	The antibody was affinity-purified from rabbit antiserum by affinity-chromatography using epitope-specific immunogen.

<b>Concentration :</b>	1 mg/ml
<b>Storage Stability :</b>	-15°C to -25°C/1 year(Do not lower than -25°C)
<b>Molecularweight :</b>	27kD
<b>Background :</b>	endomucin(EMCN) Homo sapiens EMCN is a mucin-like sialoglycoprotein that interferes with the assembly of focal adhesion complexes and inhibits interaction between cells and the extracellular matrix (Kinoshita et al., 2001 [PubMed 11418125]).[supplied by OMIM, Mar 2008],
<b>Function :</b>	function:Endothelial sialomucin, also called endomucin or mucin-like sialoglycoprotein, which interferes with the assembly of focal adhesion complexes and inhibits interaction between cells and the extracellular matrix.,PTM:Highly O-glycosylated. Sialic acid-rich glycoprotein.,subcellular location:Consistently localized to the plasma membrane and less abundantly to Golgi-like perinuclear stacks.,tissue specificity:Expressed in heart, kidney and lung.,
<b>Subcellular Location :</b>	[Isoform 1]: Cell membrane; Single-pass type I membrane protein. Membrane; Single-pass type I membrane protein. Consistently localized to the plasma membrane and less abundantly to Golgi-like perinuclear stacks.; [Isoform 2]: Secreted .
<b>Expression :</b>	Expressed in heart, kidney and lung.

## Products Images



Immunofluorescence analysis of HepG2 cells, using Mucin-14 Antibody. The picture on the right is blocked with the synthesized peptide.