

ELOVL1 Polyclonal Antibody

Catalog No :	YT1535
Reactivity :	Human;Mouse
Applications :	WB;IHC;IF;ELISA
Target :	ELOVL1
Fields :	>>Fatty acid elongation;>>Biosynthesis of unsaturated fatty acids;>>Metabolic pathways;>>Fatty acid metabolism
Gene Name :	ELOVL1
Protein Name :	Elongation of very long chain fatty acids protein 1
Human Gene Id :	64834
Human Swiss Prot No :	Q9BW60
Mouse Gene Id :	54325
Mouse Swiss Prot No :	Q9JLJ5
Immunogen :	The antiserum was produced against synthesized peptide derived from human ELOVL1. AA range:101-150
Specificity :	ELOVL1 Polyclonal Antibody detects endogenous levels of ELOVL1 protein.
Formulation :	Liquid in PBS containing 50% glycerol, 0.5% BSA and 0.02% sodium azide.
Source :	Polyclonal, Rabbit,IgG
Dilution :	WB 1:500 - 1:2000. ELISA: 1:40000.. IF 1:50-200
Purification :	The antibody was affinity-purified from rabbit antiserum by affinity-chromatography using epitope-specific immunogen.
Concentration :	1 mg/ml

Storage Stability : -15°C to -25°C/1 year(Do not lower than -25°C)

Observed Band : 33kD

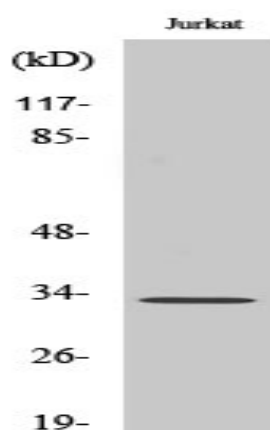
Background : domain:The di-lysine motif confers endoplasmic reticulum localization for type I membrane proteins.,function:Could be implicated in tissue-specific synthesis of very long chain fatty acids and sphingolipids. May catalyze one or both of the reduction reaction in fatty acid elongation, i.e., conversion of beta-ketoacyl CoA to beta-hydroxyacyl CoA or reduction of trans-2-enoyl CoA to the saturated acyl CoA derivative.,similarity:Belongs to the ELO family.,

Function : domain:The di-lysine motif confers endoplasmic reticulum localization for type I membrane proteins.,function:Could be implicated in tissue-specific synthesis of very long chain fatty acids and sphingolipids. May catalyze one or both of the reduction reaction in fatty acid elongation, i.e., conversion of beta-ketoacyl CoA to beta-hydroxyacyl CoA or reduction of trans-2-enoyl CoA to the saturated acyl CoA derivative.,similarity:Belongs to the ELO family.,

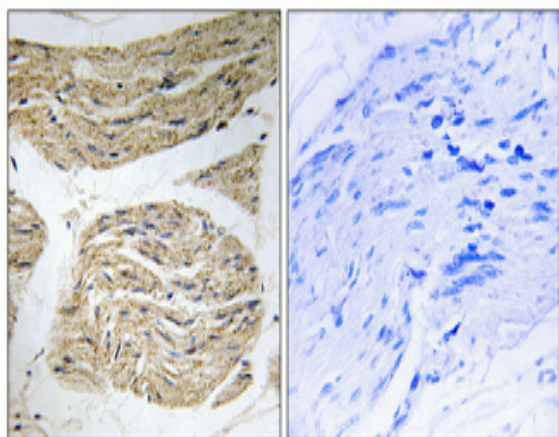
Subcellular Location : Endoplasmic reticulum membrane ; Multi-pass membrane protein .

Expression : Ubiquitous.

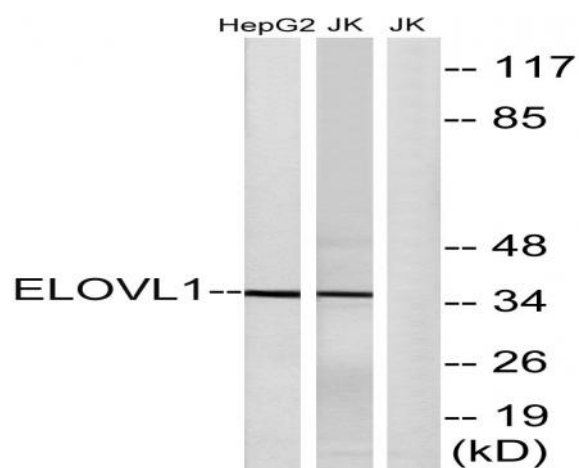
Products Images



Western Blot analysis of various cells using ELOVL1 Polyclonal Antibody diluted at 1:1000



Immunohistochemical analysis of paraffin-embedded Human skeletal muscle. Antibody was diluted at 1:100(4° overnight). High-pressure and temperature Tris-EDTA,pH8.0 was used for antigen retrieval. Negative contrl (right) obtained from antibody was pre-absorbed by immunogen peptide.



Western blot analysis of lysates from Jurkat and HepG2 cells, using ELOVL1 Antibody. The lane on the right is blocked with the synthesized peptide.