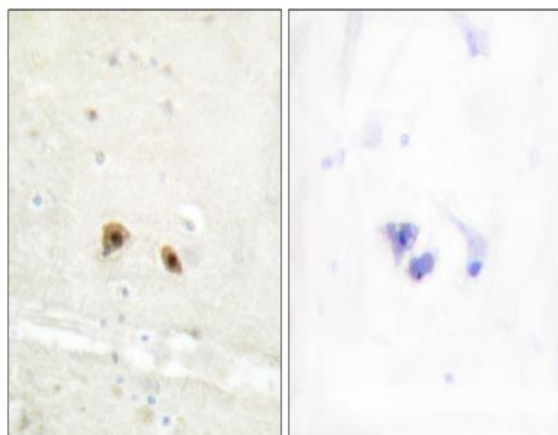


Egr-3 Polyclonal Antibody

Catalog No :	YT1499
Reactivity :	Human;Mouse;Rat
Applications :	IHC;IF;ELISA
Target :	Egr-3
Fields :	>>C-type lectin receptor signaling pathway;>>Hepatitis B;>>Viral carcinogenesis
Gene Name :	EGR3
Protein Name :	Early growth response protein 3
Human Gene Id :	1960
Human Swiss Prot No :	Q06889
Mouse Gene Id :	13655
Mouse Swiss Prot No :	P43300
Rat Gene Id :	25148
Rat Swiss Prot No :	P43301
Immunogen :	The antiserum was produced against synthesized peptide derived from human EGR3. AA range:338-387
Specificity :	Egr-3 Polyclonal Antibody detects endogenous levels of Egr-3 protein.
Formulation :	Liquid in PBS containing 50% glycerol, 0.5% BSA and 0.02% sodium azide.
Source :	Polyclonal, Rabbit,IgG
Dilution :	IHC 1:100 - 1:300. ELISA: 1:10000.. IF 1:50-200

Purification :	The antibody was affinity-purified from rabbit antiserum by affinity-chromatography using epitope-specific immunogen.
Concentration :	1 mg/ml
Storage Stability :	-15°C to -25°C/1 year(Do not lower than -25°C)
Molecularweight :	43kD
Background :	This gene encodes a transcriptional regulator that belongs to the EGR family of C2H2-type zinc-finger proteins. It is an immediate-early growth response gene which is induced by mitogenic stimulation. The protein encoded by this gene participates in the transcriptional regulation of genes in controlling biological rhythm. It may also play a role in a wide variety of processes including muscle development, lymphocyte development, endothelial cell growth and migration, and neuronal development. Alternative splicing results in multiple transcript variants encoding distinct isoforms.[provided by RefSeq, Dec 2010],
Function :	developmental stage:In T-cells, expressed 20 minutes following activation.,function:Probable transcription factor involved in muscle spindle development.,similarity:Belongs to the EGR C2H2-type zinc-finger protein family.,similarity:Contains 3 C2H2-type zinc fingers.,
Subcellular Location :	Nucleus .
Expression :	Brain,Peripheral blood T-cell,

Products Images



Immunohistochemistry analysis of paraffin-embedded human brain tissue, using EGR3 Antibody. The picture on the right is blocked with the synthesized peptide.