

FPR1 Polyclonal Antibody

Catalog No :	YT1769
Reactivity :	Human;Rat;Mouse;
Applications :	WB;IF;ELISA
Target :	FPR1
Fields :	>>Rap1 signaling pathway;>>Neuroactive ligand-receptor interaction;>>Neutrophil extracellular trap formation;>>Staphylococcus aureus infection
Gene Name :	FPR1
Protein Name :	fMet-Leu-Phe receptor
Human Gene Id :	2357
Human Swiss Prot No :	P21462
Mouse Swiss Prot No :	P33766
Immunogen :	The antiserum was produced against synthesized peptide derived from human FPR1. AA range:151-200
Specificity :	FPR1 Polyclonal Antibody detects endogenous levels of FPR1 protein.
Formulation :	Liquid in PBS containing 50% glycerol, 0.5% BSA and 0.02% sodium azide.
Source :	Polyclonal, Rabbit,IgG
Dilution :	WB 1:500 - 1:2000. IF 1:200 - 1:1000. ELISA: 1:40000. Not yet tested in other applications.
Purification :	The antibody was affinity-purified from rabbit antiserum by affinity-chromatography using epitope-specific immunogen.
Concentration :	1 mg/ml

Storage Stability : -15°C to -25°C/1 year(Do not lower than -25°C)

Observed Band : 38kD

Cell Pathway : Neuroactive ligand-receptor interaction;

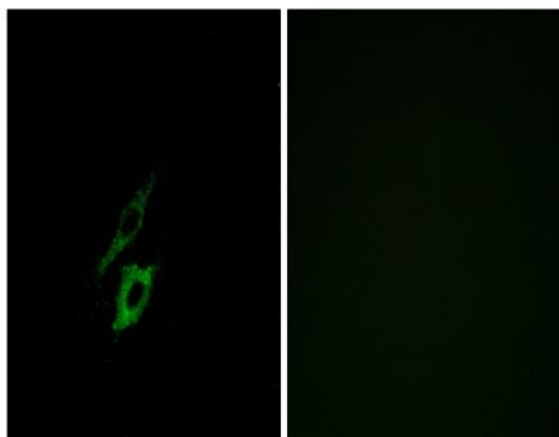
Background : formyl peptide receptor 1(FPR1) Homo sapiens This gene encodes a G protein-coupled receptor of mammalian phagocytic cells that is a member of the G-protein coupled receptor 1 family. The protein mediates the response of phagocytic cells to invasion of the host by microorganisms and is important in host defense and inflammation.[provided by RefSeq, Jul 2010],

Function : function:High affinity receptor for N-formyl-methionyl peptides, which are powerful neutrophils chemotactic factors. Binding of FMLP to the receptor causes activation of neutrophils. This response is mediated via a G-protein that activates a phosphatidylinositol-calcium second messenger system.,PTM:Phosphorylated; which is necessary for desensitization.,similarity:Belongs to the G-protein coupled receptor 1 family.,tissue specificity:Neutrophils.,

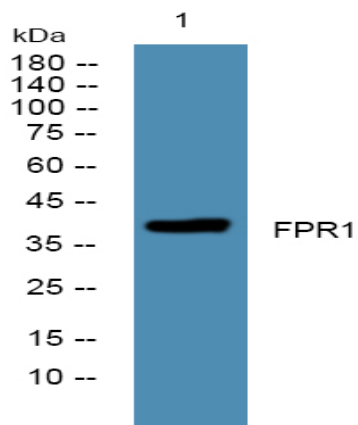
Subcellular Location : Cell membrane ; Multi-pass membrane protein . Internalizes in presence of its ligands, fMLP, TAFA4 and CTSG. .

Expression : Neutrophils.

Products Images



Immunofluorescence analysis of A549 cells, using FPR1 Antibody. The picture on the right is blocked with the synthesized peptide.



Western blot analysis of lysates from DU145 cells, primary antibody was diluted at 1:1000, 4° over night