

FoxE1 Polyclonal Antibody

Catalog No :	YT1748
Reactivity :	Human;Mouse;Rat
Applications :	WB;IHC;IF;ELISA
Target :	FoxE1
Gene Name :	FOXE1
Protein Name :	Forkhead box protein E1
Human Gene Id :	2304
Human Swiss Prot No :	O00358
Mouse Gene Id :	110805
Mouse Swiss Prot No :	Q8R2I0
Immunogen :	The antiserum was produced against synthesized peptide derived from human TTF2. AA range:10-59
Specificity :	FoxE1 Polyclonal Antibody detects endogenous levels of FoxE1 protein.
Formulation :	Liquid in PBS containing 50% glycerol, 0.5% BSA and 0.02% sodium azide.
Source :	Polyclonal, Rabbit,IgG
Dilution :	WB 1:500 - 1:2000. IHC 1:100 - 1:300. ELISA: 1:10000.. IF 1:50-200
Purification :	The antibody was affinity-purified from rabbit antiserum by affinity-chromatography using epitope-specific immunogen.
Concentration :	1 mg/ml
Storage Stability :	-15°C to -25°C/1 year(Do not lower than -25°C)

Observed Band : 34kD

Background :

This intronless gene belongs to the forkhead family of transcription factors, which is characterized by a distinct forkhead domain. This gene functions as a thyroid transcription factor which likely plays a crucial role in thyroid morphogenesis. Mutations in this gene are associated with congenital hypothyroidism and cleft palate with thyroid dysgenesis. The map localization of this gene suggests it may also be a candidate gene for squamous cell epithelioma and hereditary sensory neuropathy type I. [provided by RefSeq, Jul 2008],

Function :

disease:Defects in FOXE1 are the cause of Bamforth-Lazarus syndrome [MIM:241850]. A disease associated with thyroid agenesis, cleft palate and choanal atresia.,function:Probable transcription factor. Could be involved in thyroid gland organogenesis.,polymorphism:An alanine stretch that varies from 12 to 19 residues is present. This polymorphisms can be used as a marker to study the role of FOXE1 in other cases of thyroid dysgenesis, especially in familial cases.,PTM:Phosphorylated.,sequence caution:Several conflicts.,similarity:Contains 1 fork-head DNA-binding domain.,tissue specificity:Detected in adult brain, placenta, lung, liver, skeletal muscle, kidney, pancreas, heart, colon, small intestine testis and thymus. Expression was strongest in heart and pancreas.,

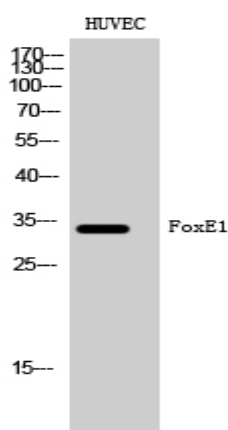
Subcellular Location :

Nucleus .

Expression :

Detected in adult brain, placenta, lung, liver, skeletal muscle, kidney, pancreas, heart, colon, small intestine testis and thymus. Expression was strongest in heart and pancreas.

Products Images



Western Blot analysis of HUVEC cells using FoxE1 Polyclonal Antibody cells nucleus extracted by Minute TM Cytoplasmic and Nuclear Fractionation kit (SC-003, Inventbiotech, MN, USA).

