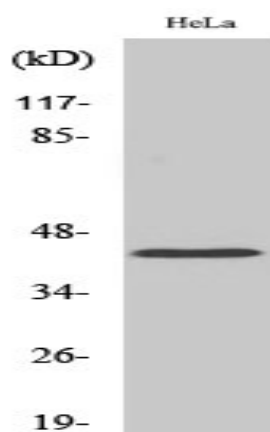


## EAR2 Polyclonal Antibody

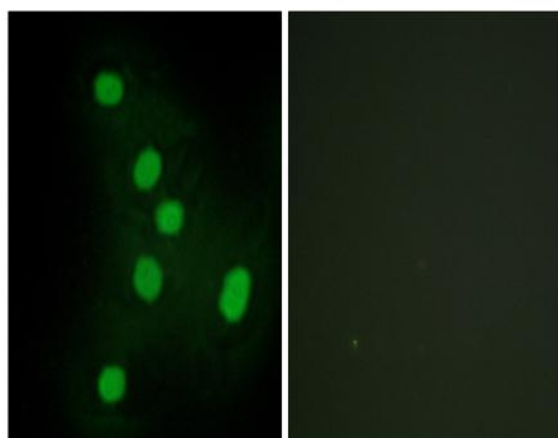
<b>Catalog No :</b>	YT1450
<b>Reactivity :</b>	Human;Mouse;Rat
<b>Applications :</b>	WB;IHC;IF;ELISA
<b>Target :</b>	EAR2
<b>Gene Name :</b>	NR2F6
<b>Protein Name :</b>	Nuclear receptor subfamily 2 group F member 6
<b>Human Gene Id :</b>	2063
<b>Human Swiss Prot No :</b>	P10588
<b>Mouse Gene Id :</b>	13864
<b>Mouse Swiss Prot No :</b>	P43136
<b>Rat Gene Id :</b>	245980
<b>Rat Swiss Prot No :</b>	O09017
<b>Immunogen :</b>	The antiserum was produced against synthesized peptide derived from human NR2F6. AA range:11-60
<b>Specificity :</b>	EAR2 Polyclonal Antibody detects endogenous levels of EAR2 protein.
<b>Formulation :</b>	Liquid in PBS containing 50% glycerol, 0.5% BSA and 0.02% sodium azide.
<b>Source :</b>	Polyclonal, Rabbit,IgG
<b>Dilution :</b>	WB 1:500 - 1:2000. IHC 1:100 - 1:300. IF 1:200 - 1:1000. ELISA: 1:20000. Not yet tested in other applications.
<b>Purification :</b>	The antibody was affinity-purified from rabbit antiserum by affinity-chromatography using epitope-specific immunogen.

<b>Concentration :</b>	1 mg/ml
<b>Storage Stability :</b>	-15°C to -25°C/1 year(Do not lower than -25°C)
<b>Observed Band :</b>	42kD
<b>Background :</b>	similarity:Belongs to the nuclear hormone receptor family. NR2 subfamily.,similarity:Contains 1 nuclear receptor DNA-binding domain.,
<b>Function :</b>	similarity:Belongs to the nuclear hormone receptor family. NR2 subfamily.,similarity:Contains 1 nuclear receptor DNA-binding domain.,
<b>Subcellular Location :</b>	Nucleus .
<b>Expression :</b>	Expressed in heart, placenta, liver, skeletal muscle, kidney and pancreas.

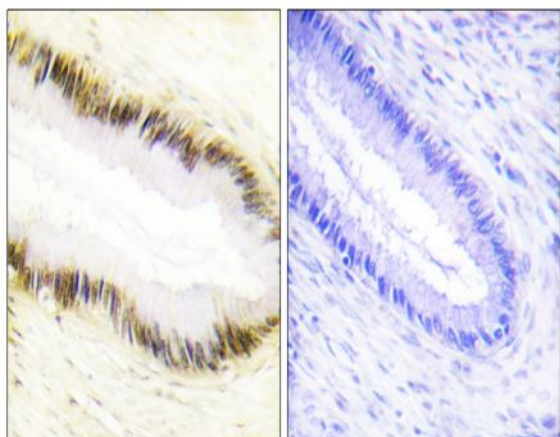
## Products Images



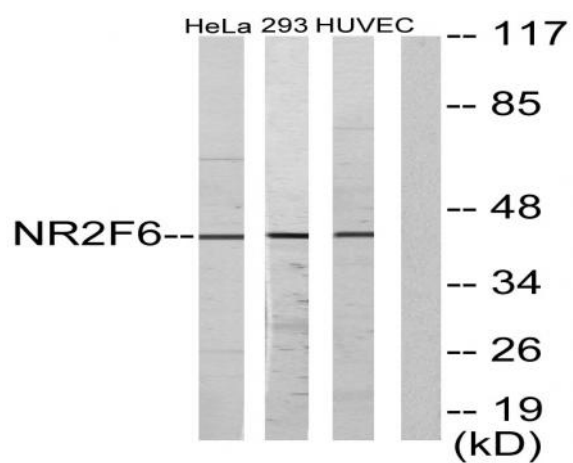
Western Blot analysis of various cells using EAR2 Polyclonal Antibody cells nucleus extracted by Minute TM Cytoplasmic and Nuclear Fractionation kit (SC-003, Inventbiotech, MN, USA).



Immunofluorescence analysis of HepG2 cells, using NR2F6 Antibody. The picture on the right is blocked with the synthesized peptide.



Immunohistochemistry analysis of paraffin-embedded human cervix carcinoma tissue, using NR2F6 Antibody. The picture on the right is blocked with the synthesized peptide.



Western blot analysis of lysates from HeLa, HUVEC, and 293 cells, using NR2F6 Antibody. The lane on the right is blocked with the synthesized peptide.