

Dynein LC 2B Polyclonal Antibody

Catalog No :	YT1433
Reactivity :	Human;Mouse
Applications :	IHC;IF;ELISA
Target :	Dynein LC 2B
Fields :	>>Salmonella infection
Gene Name :	DYNLRB2
Protein Name :	Dynein light chain roadblock-type 2
Human Gene Id :	83657
Human Swiss Prot No :	Q8TF09
Mouse Gene Id :	75465
Mouse Swiss Prot No :	Q9DAJ5
Immunogen :	The antiserum was produced against synthesized peptide derived from human DYNLRB2. AA range:21-70
Specificity :	Dynein LC 2B Polyclonal Antibody detects endogenous levels of Dynein LC 2B protein.
Formulation :	Liquid in PBS containing 50% glycerol, 0.5% BSA and 0.02% sodium azide.
Source :	Polyclonal, Rabbit,IgG
Dilution :	IHC 1:100 - 1:300. ELISA: 1:10000.. IF 1:50-200
Purification :	The antibody was affinity-purified from rabbit antiserum by affinity-chromatography using epitope-specific immunogen.
Concentration :	1 mg/ml

Storage Stability : -15°C to -25°C/1 year (Do not lower than -25°C)

Molecularweight : 11kD

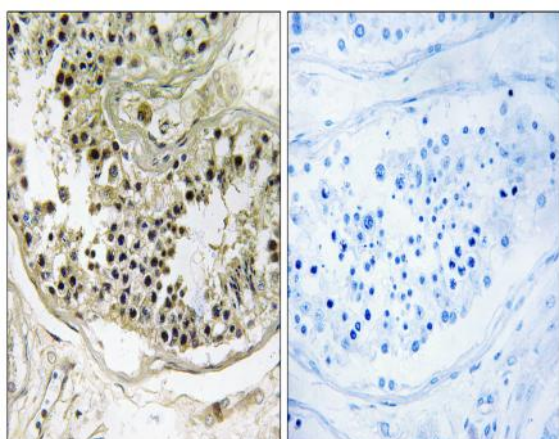
Background : function: May be involved in assembly and motor function of dynein, which plays a central role in cell division and intracellular transport., miscellaneous: Expression is significantly down-regulated in hepatocellular carcinoma (HCC) patients., similarity: Belongs to the GAMAD family., tissue specificity: High expression in heart, brain, placenta, skeletal muscle, prostate and small intestine; moderate in kidney, pancreas, spleen, testis, ovary and colon; low in lung, liver, thymus and leukocyte.,

Function : function: May be involved in assembly and motor function of dynein, which plays a central role in cell division and intracellular transport., miscellaneous: Expression is significantly down-regulated in hepatocellular carcinoma (HCC) patients., similarity: Belongs to the GAMAD family., tissue specificity: High expression in heart, brain, placenta, skeletal muscle, prostate and small intestine; moderate in kidney, pancreas, spleen, testis, ovary and colon; low in lung, liver, thymus and leukocyte.,

Subcellular Location : Cytoplasm, cytoskeleton.

Expression : High expression in heart, brain, placenta, skeletal muscle, prostate and small intestine; moderate in kidney, pancreas, spleen, testis, ovary and colon; low in lung, liver, thymus and leukocyte.

Products Images



Immunohistochemistry analysis of paraffin-embedded human testis tissue, using DYNLRB2 Antibody. The picture on the right is blocked with the synthesized peptide.